

INLET:
 FX=37.5 LBF [167 N] MY=62.5 LB FT [84.7 N·m]
 FY=37.5 LBF [167 N] MZ=62.5 LB FT [84.7 N·m]
 FZ=37.5 LBF [167 N] MX=62.5 LB FT [84.7 N·m]

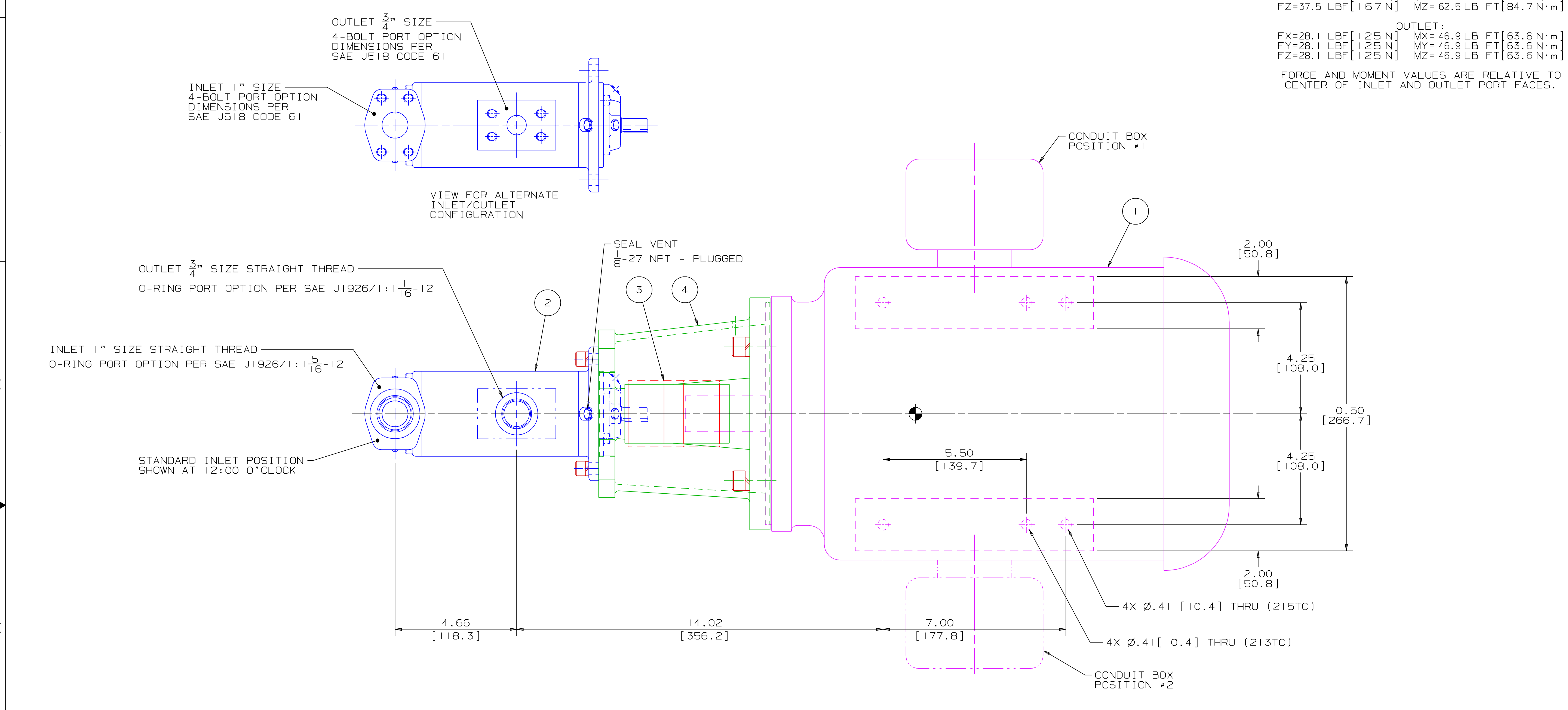
OUTLET:
 FX=28.1 LBF [125 N] MY=46.9 LB FT [63.6 N·m]
 FY=28.1 LBF [125 N] MZ=46.9 LB FT [63.6 N·m]
 FZ=28.1 LBF [125 N] MX=46.9 LB FT [63.6 N·m]

FORCE AND MOMENT VALUES ARE RELATIVE TO
CENTER OF INLET AND OUTLET PORT FACES.

REVISION HISTORY					
CHG NO	ZONE	REV	DESCRIPTION	DATE	BY / APPROVED

ITEM	DESCRIPTION	APPROXIMATE WEIGHT		MATERIAL
		LBS	KILOGRAMS	
1	MOTOR *(213TC & 215TC)	190.0	86.2	
2	PUMP	18.0	8.2	
3	COUPLING, LOVEJOY L-100	3.5	1.6	
4	BRACKET	5.0	2.3	ALUMINUM
TOTAL		216.5	98.3	

* DRIVER DIMENSIONS MAY VARY
WITH TYPE AND MAKE OF DRIVER



DRAWING CERTIFICATION

12 O'CLOCK
9 O'CLOCK
3 O'CLOCK
6 O'CLOCK
••SEE NOTES 4 & 5••

CUSTOMER NAME -----
 CUSTOMER PO NUMBER -----
 CUSTOMER PART NUMBER -----

UNIT BOM NUMBER -----

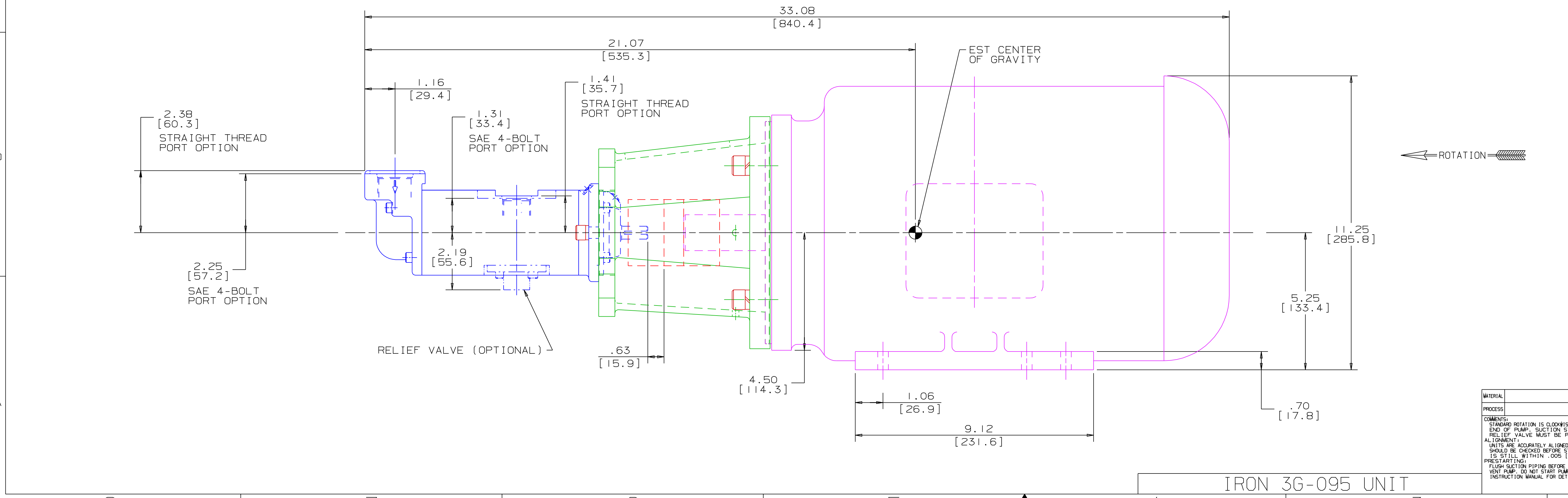
PUMP
 PUMP TYPE -----
 SHAFT ROTATION -----
 INLET PORT OPTION -----
 OUTLET PORT OPTION -----
 INLET PORT ORIENTATION -----
 OUTLET PORT ORIENTATION -----
 INLET ADAPTER OPTION -----
 OUTLET ADAPTER OPTION -----
 RELIEF VALVE SET PRESSURE,
 IF APPLICABLE -----

MOTOR
 MOTOR MANUFACTURER -----
 TYPE -----
 FRAME -----
 POWER -----
 ROTATING SPEED -----
 PHASE(S) -----
 FREQUENCY -----
 VOLTAGE -----
 CONDUIT BOX POSITION -----
 MOTOR INSTALLED BY -----

CERTIFIED BY -----
 IMO ORDER NUMBER -----
 CERTIFICATION DATE -----
 CERTIFICATION REV. NO. -----

NOTES:

- NOTES:
- UNLESS OTHERWISE SPECIFIED, ALL DIMENSIONS ARE IN INCHES. DIMENSIONS IN [] ARE MILLIMETERS.
 - THIS IS A STANDARD PRE-ENGINEERED UNIT OUTLINE. ANY CHANGES OUTSIDE OF THE CERTIFICATION BLOCK WILL REQUIRE A NEW DRAWING ASSIGNMENT.
 - APPROXIMATE WEIGHT AND ESTIMATED C/G DO NOT INCLUDE OPTIONAL ADAPTERS OR OPTIONAL RELIEF VALVE.
 - TO MAXIMIZE SEAL LIFE, SEAL VENT MUST BE ORIENTED UPWARD (12 O'CLOCK) WHEN PUMP IS INSTALLED HORIZONTALLY. VENT ORIENTATION IS NOT CRITICAL WHEN PUMP IS INSTALLED WITH SHAFT VERTICALLY UPWARD.
 - ALTERNATE PORT ORIENTATIONS ARE PROVIDED IF SPECIFIED ON ORDER. AVAILABLE ORIENTATIONS ARE 3,6,9, AND 12 O'CLOCK.



MATERIAL
 PROCESS
 COMMENTS:
 STANDARD ROTATION IS CLOCKWISE WHEN VIEWED FROM COUPLER END OF PUMP. SUCTION STRAINER AND DISCHARGE RELIEF VALVE MUST BE PROVIDED. ALIGNMENT UNITS ARE ACCURATELY ALIGNED AT THE FACTORY. ALIGNMENT SHOULD BE CHECKED BEFORE STARTING TO ENSURE THAT IT IS STILL WITHIN .005 [0.13] FTM.
 FLUSH SUCTION PIPING BEFORE CONNECTING PUMP. PRIME AND VENT PUMP. DO NOT START PUMP WITH VALVES CLOSED. READ INSTRUCTION MANUAL FOR DETAILS BEFORE STARTING.

WEB ADDRESS: WWW.IMO-PUMP.COM EMAIL: IMO.PUMP@COLFAXCORP.COM

DRAWN DMM 10-15-01
 CHECKED DMM 10-15-01
 APPD DMM 10-15-01
 METHODS

Imo Pump
 1710 Airport Road
 PO Box 5020
 Monroe, NC USA
 28111.5020

TITLE
 OUTLINE UNIT STANDARD (IRON)
 AA3G / -----095

NO. NEXT REVISION F. FIRST ORDER SIZE CAGE CODE DWG NO.
 USED ON EBI22A F 59180 SDD20277

SCALE 1/2 WEIGHT SEE ABOVE SHEET 1 OF 1

IRON 3G-095 UNIT