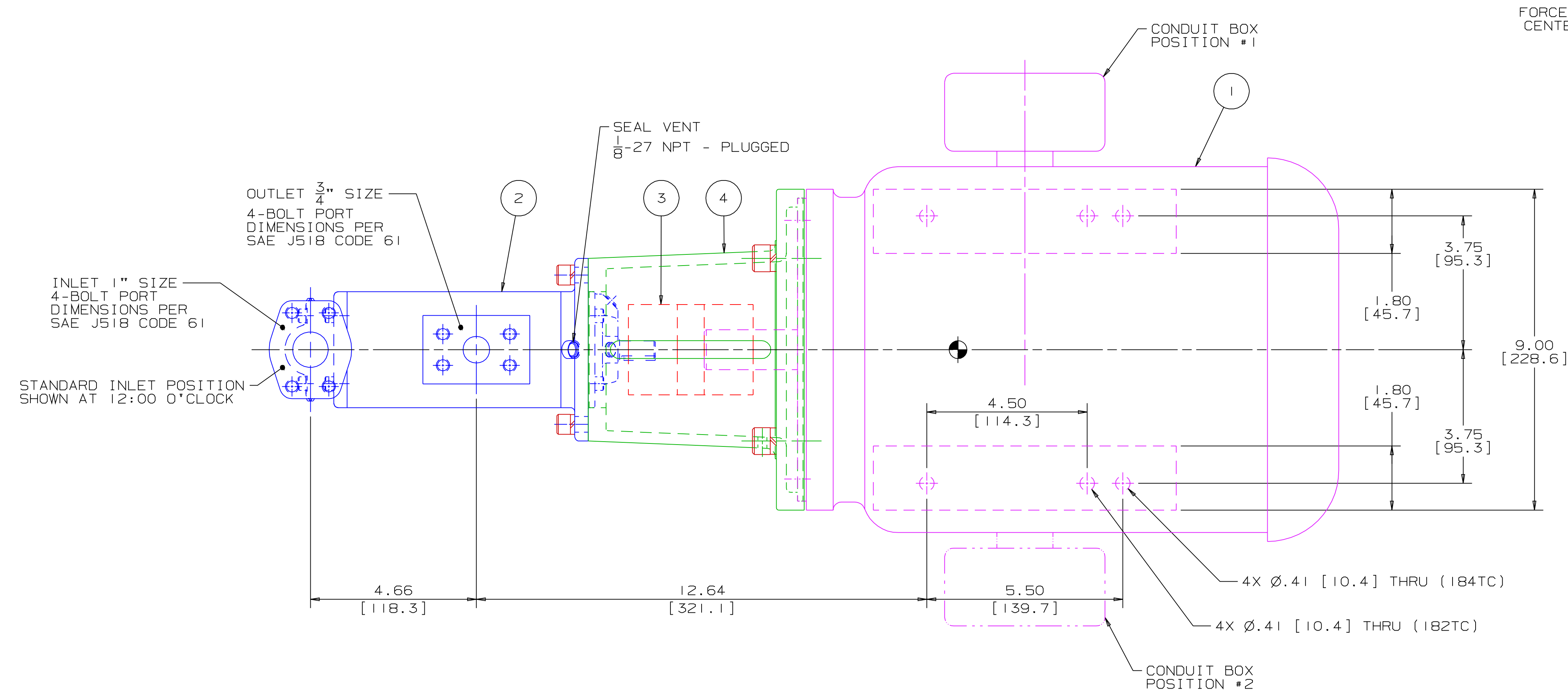


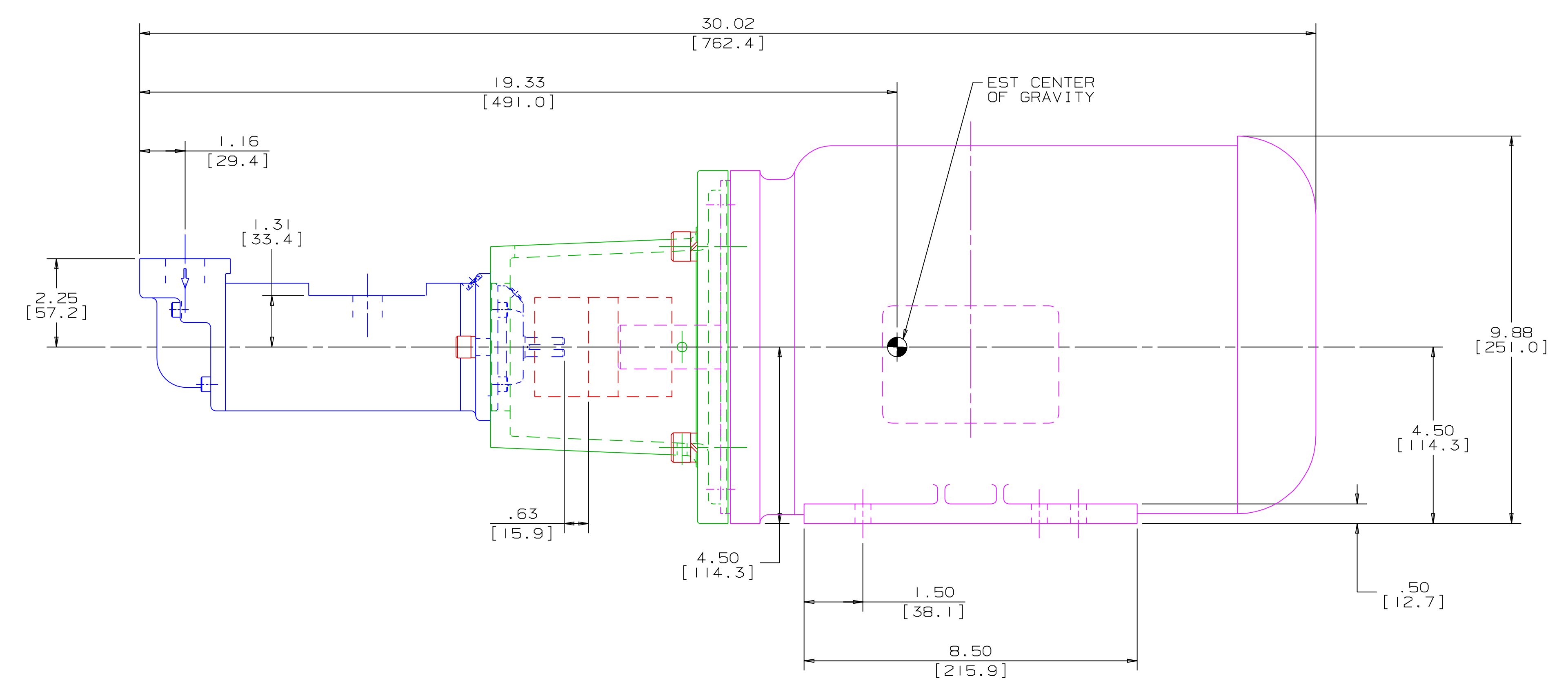
REVISION HISTORY					
CHG NO	ZONE	REV	DESCRIPTION	DATE	BY / APPROVED

ITEM	DESCRIPTION	APPROXIMATE WEIGHT		MATERIAL
		LBS	KILOGRAMS	
1	MOTOR *(182TC & 184TC)	125.0	56.7	
2	PUMP	18.0	8.2	
3	COUPLING, LOVEJOY L-100	3.5	1.6	
4	BRACKET	5.0	2.3	ALUMINUM
TOTAL		151.5	68.8	

* DRIVER DIMENSIONS MAY VARY WITH TYPE AND MAKE OF DRIVER



DRAWING CERTIFICATION	
<p>12 O'CLOCK 9 O'CLOCK 3 O'CLOCK 6 O'CLOCK **SEE NOTES 4 & 5**</p>	
CUSTOMER NAME	-----
CUSTOMER PO NUMBER	-----
CUSTOMER PART NUMBER	-----
UNIT BOM NUMBER	-----
PUMP TYPE	-----
SHAFT ROTATION	-----
INLET PORT ORIENTATION	-----
OUTLET PORT ORIENTATION	-----
INLET ADAPTER OPTION	-----
OUTLET ADAPTER OPTION	-----
MOTOR MANUFACTURER	-----
TYPE	-----
FRAME	-----
POWER	-----
ROTATING SPEED	-----
PHASE(S)	-----
FREQUENCY	-----
VOLTAGE	-----
CONDUIT BOX POSITION	-----
MOTOR INSTALLED BY	-----
CERTIFIED BY	-----
IMO ORDER NUMBER	-----
CERTIFICATION DATE	-----
CERTIFICATION REV. NO.	-----
NOTES:	



- NOTES:
- UNLESS OTHERWISE SPECIFIED, ALL DIMENSIONS ARE IN INCHES. DIMENSIONS IN [] ARE MILLIMETERS.
 - THIS IS A STANDARD PRE-ENGINEERED UNIT OUTLINE. ANY CHANGES OUTSIDE OF THE CERTIFICATION BLOCK WILL REQUIRE A NEW DRAWING ASSIGNMENT.
 - APPROXIMATE WEIGHT AND ESTIMATED C/G DO NOT INCLUDE OPTIONAL ADAPTERS OR OPTIONAL RELIEF VALVE.
 - TO MAXIMIZE SEAL LIFE, SEAL VENT MUST BE ORIENTED UPWARD (12 O'CLOCK) WHEN PUMP IS INSTALLED HORIZONTALLY. VENT ORIENTATION IS NOT CRITICAL WHEN PUMP IS INSTALLED WITH SHAFT VERTICALLY UPWARD.
 - ALTERNATE PORT ORIENTATIONS ARE PROVIDED IF SPECIFIED ON ORDER. AVAILABLE ORIENTATIONS ARE 3,6,9, AND 12 O'CLOCK.

WEB ADDRESS: WWW.IMO-PUMP.COM		EMAIL: IMO.PUMP@COLFAXCORP.COM	
DRAWN	DMM 10-11-01	<p>Imo Pump 1710 Airport Road PO Box 5020 Monroe, NC USA 28111.5020</p>	<p>TITLE OUTLINE UNIT STANDARD (STEEL) AA3G / S-095</p>
CHECKED	DMM 10-12-01		
APPD	DMM 10-12-01		
PROCESS		<p>NO. MILL PROJECTION</p> <p>SIZE</p> <p>CAGE CODE</p> <p>DWG NO</p> <p>NO. MILL PROJECTION</p> <p>SIZE</p> <p>CAGE CODE</p> <p>DWG NO</p>	<p>SCALE 1/2</p> <p>WEIGHT SEE ABOVE</p> <p>SHEET 1 OF 1</p>

STEEL 3G-095 UNIT