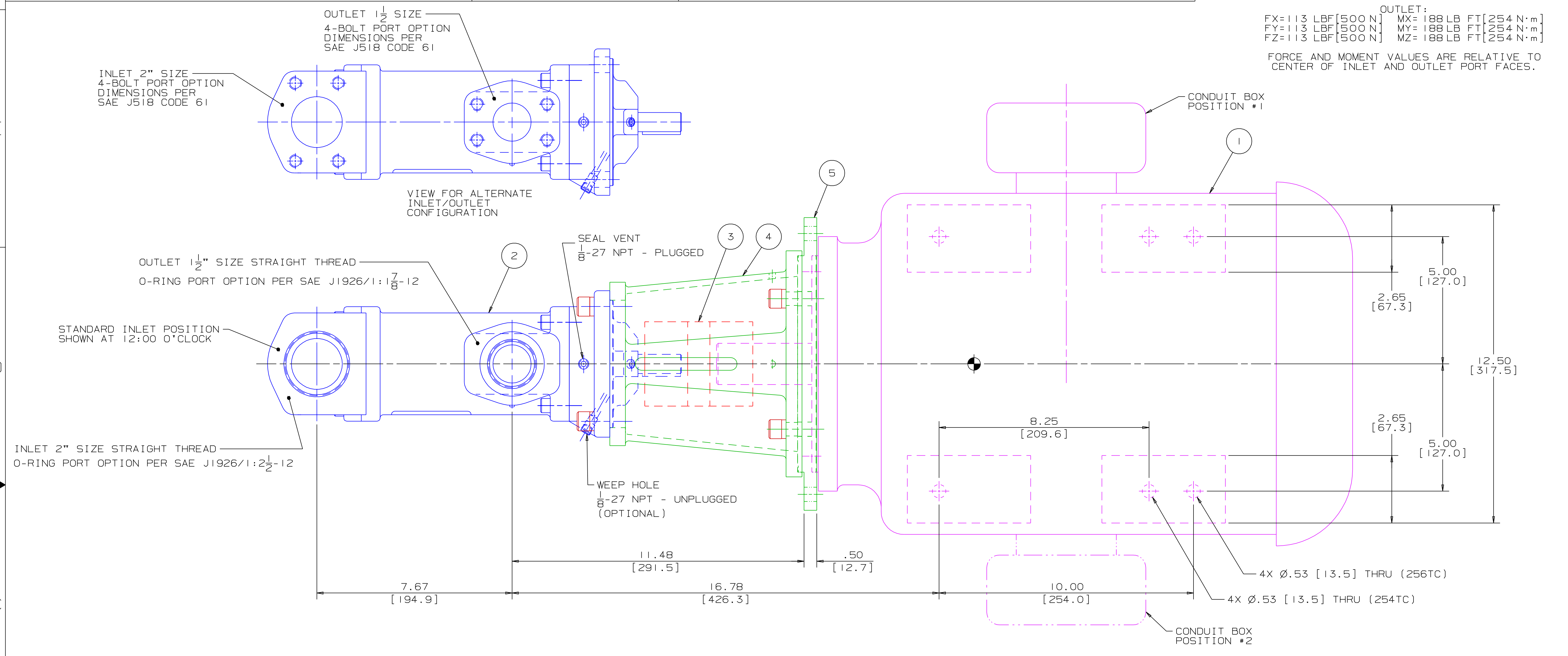


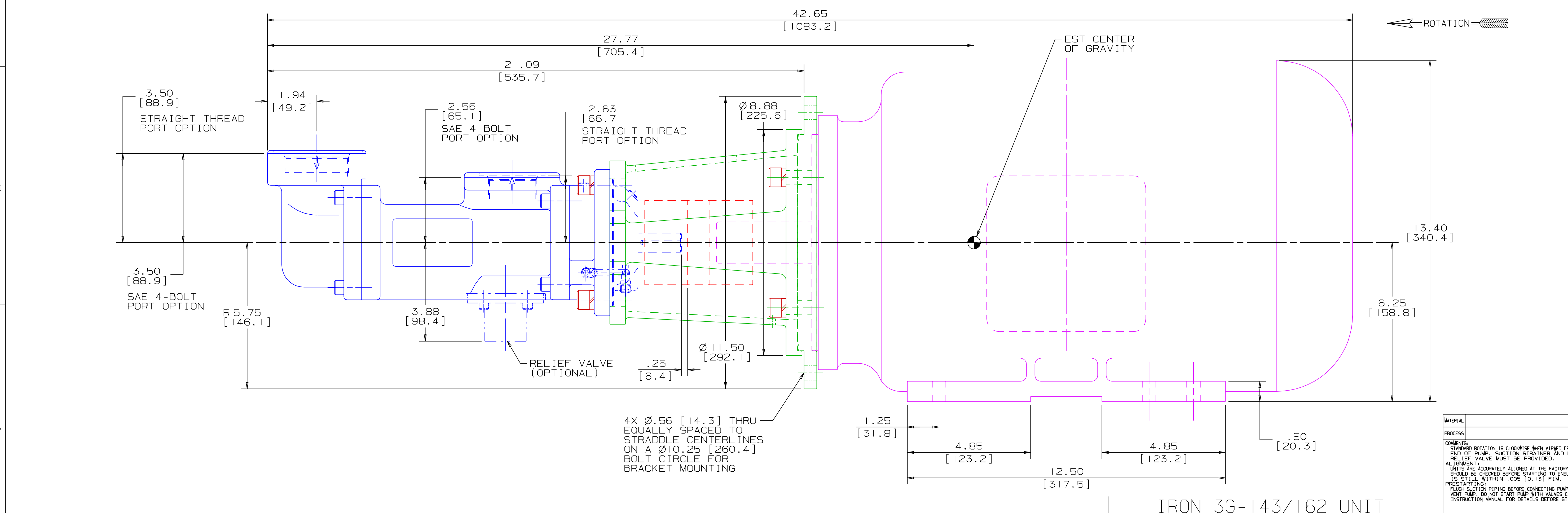
REVISION HISTORY					
CHG NO	ZONE	REV	DESCRIPTION	DATE	BY / APPROVED

ITEM	DESCRIPTION	APPROXIMATE WEIGHT		MATERIAL
		LBS	KG	
1	MOTOR (254TC & 256TC)	298.0	135.1	
2	PUMP	44.0	20.0	
3	COUPLING, LOVEJOY L-110	6.0	2.7	
4	BRACKET	5.0	2.3	ALUMINUM
5	BRACKET ADAPTER	1.0	0.5	ALUMINUM
TOTAL		354.0	160.6	



DRIVER DIMENSIONS MAY VARY WITH TYPE AND MAKE OF DRIVER. THE MOTOR MOUNTING FLANGE DIAMETER VARIES SIGNIFICANTLY FOR SOME MANUFACTURERS WHICH CAN PREVENT THE USE OF THE VERTICAL MOUNTING HOLES IN THE ADAPTER PLATE. CHECK THE MOTOR MANUFACTURER DIMENSIONS TO MAKE SURE THE MOTOR FLANGE DIAMETER (BD) DOES NOT EXCEED 9 1/2" IF USING BRACKET MOUNTING.

DRAWING CERTIFICATION	
12 O'CLOCK	SHAFT
9 O'CLOCK	SEAL VENT
6 O'CLOCK	3 O'CLOCK
SEE NOTES 4 & 5	
CUSTOMER NAME -----	
CUSTOMER PO NUMBER -----	
CUSTOMER PART NUMBER -----	
UNIT BOM NUMBER -----	
PUMP	PUMP TYPE -----
	SHAFT ROTATION -----
	INLET PORT OPTION -----
	OUTLET PORT OPTION -----
	INLET PORT ORIENTATION -----
MOTOR	OUTLET PORT ORIENTATION -----
	INLET ADAPTER OPTION -----
	OUTLET ADAPTER OPTION -----
	RELIEF VALVE SET PRESSURE, IF APPLICABLE -----
	MOTOR MANUFACTURER -----
MOTOR TYPE -----	
MOTOR FRAME -----	
MOTOR POWER -----	
MOTOR ROTATING SPEED -----	
MOTOR PHASE(S) -----	
MOTOR FREQUENCY -----	
MOTOR VOLTAGE -----	
MOTOR CONDUIT BOX POSITION -----	
MOTOR INSTALLED BY -----	
CERTIFIED BY -----	
IMO ORDER NUMBER -----	
CERTIFICATION DATE -----	
CERTIFICATION REV. NO. -----	
NOTES:	



- NOTES:
- UNLESS OTHERWISE SPECIFIED, ALL DIMENSIONS ARE IN INCHES. DIMENSIONS IN [] ARE MILLIMETERS.
 - THIS IS A STANDARD PRE-ENGINEERED UNIT OUTLINE. ANY CHANGES OUTSIDE OF THE CERTIFICATION BLOCK WILL REQUIRE A NEW DRAWING ASSIGNMENT.
 - APPROXIMATE WEIGHT AND ESTIMATED C/G DO NOT INCLUDE OPTIONAL ADAPTERS OR OPTIONAL RELIEF VALVE.
 - TO MAXIMIZE SEAL LIFE, SEAL VENT MUST BE ORIENTED UPWARD (12 O'CLOCK) WHEN PUMP IS INSTALLED HORIZONTALLY. VENT ORIENTATION IS NOT CRITICAL WHEN PUMP IS INSTALLED WITH SHAFT VERTICALLY UPWARD.
 - ALTERNATE PORT ORIENTATIONS ARE PROVIDED IF SPECIFIED ON ORDER. AVAILABLE ORIENTATIONS ARE 3,6,9, AND 12 O'CLOCK.

WEB ADDRESS: WWW.IMO-PUMP.COM		EMAIL: IMO.PUMP@COLFAXCORP.COM	
DRAWN	DMM 9-7-01	 Imo Pump 1710 Airport Road PO Box 5020 Monroe, NC USA 28111.5020	TITLE OUTLINE UNIT STANDARD (IRON) AA3G / 143 / 162
CHECKED	DMM 10-3-01		
APPROVED	DMM 10-3-01		
PROCESS		SIZE	CAGE CODE
COMMENTS:	STANDARD ROTATION IS CLOCKWISE WHEN VIEWED FROM COUPLING END OF PUMP. SUCTION STRAINER AND DISCHARGE RELIEF VALVE MUST BE PROVIDED. ALIGNMENT SHOULD BE CHECKED BEFORE STARTING TO ENSURE THAT IT IS STILL WITHIN .005 [0.13] FTM. PRE-STARTUP PIPING BEFORE CONNECTING PUMP. PRIME AND VENT PUMP. DO NOT START PUMP WITH VALVES CLOSED. READ INSTRUCTION MANUAL FOR DETAILS BEFORE STARTING.	FIRST ORDER	DWG NO
		EB122A	59180
		SCALE	1/2
		WEIGHT	SEE ABOVE
		SHEET	1 OF 1

IRON 3G-143/162 UNIT