

INLET:
 FX=113 LBF [500N] MY=188 LB FT [254 N·m]
 FY=113 LBF [500N] MZ=188 LB FT [254 N·m]
 FZ=113 LBF [500N]

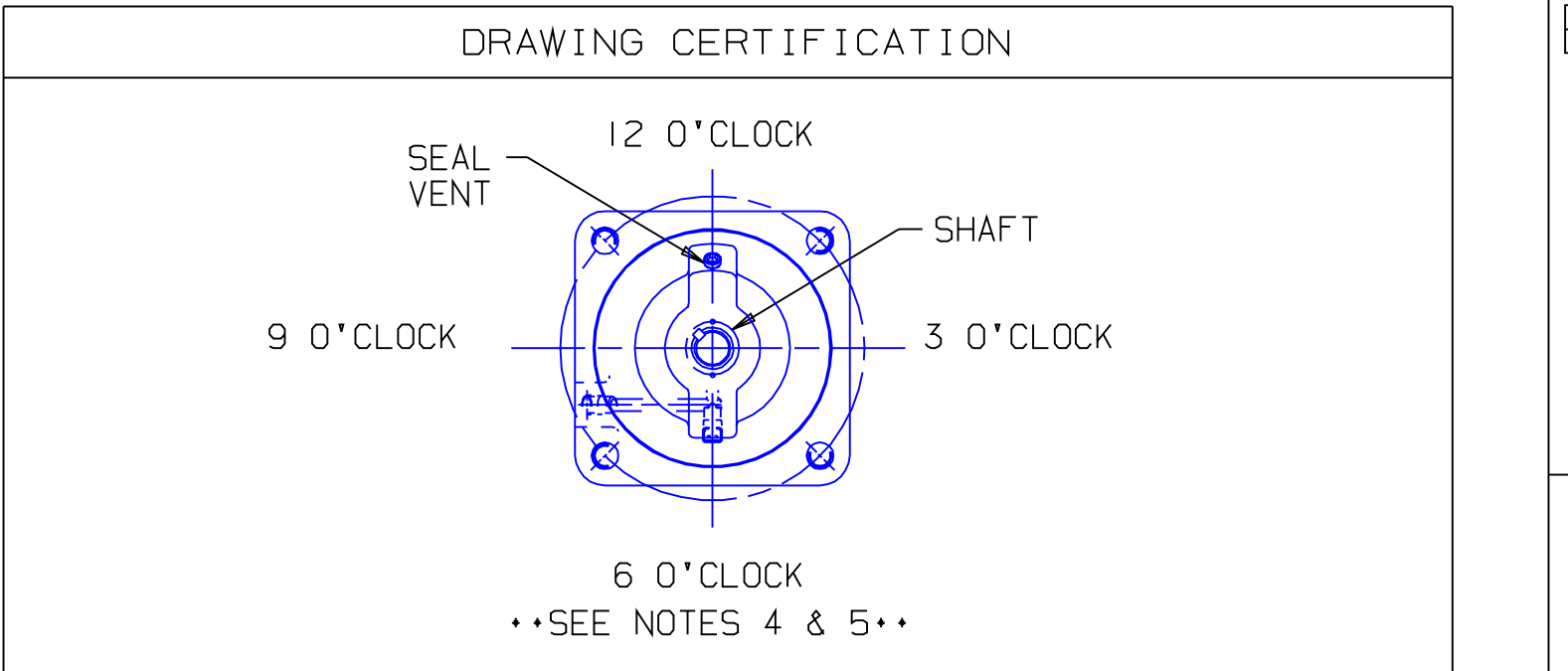
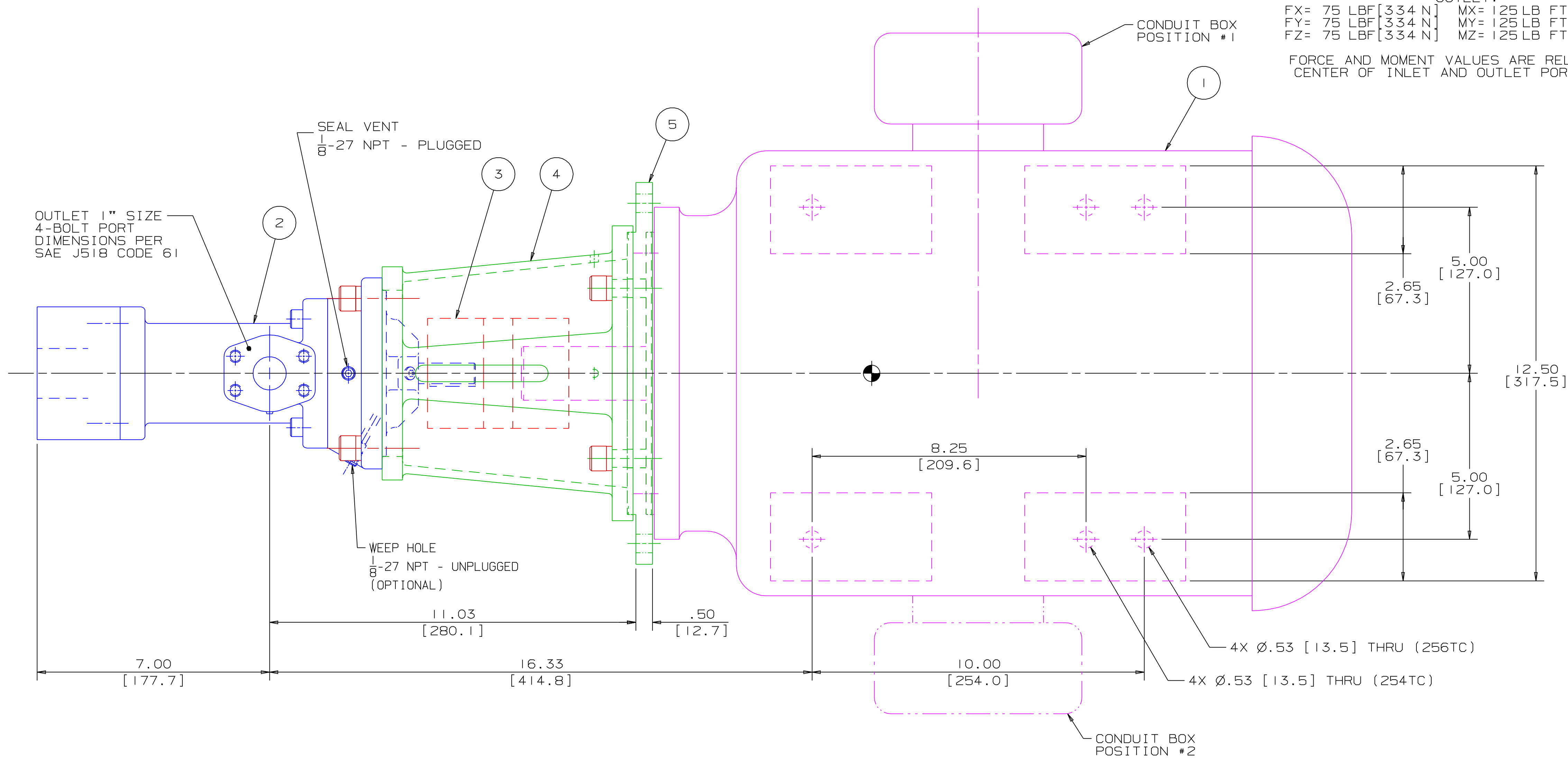
OUTLET:
 MX=125 LB FT [169 N·m]
 MY=125 LB FT [169 N·m]
 MZ=125 LB FT [169 N·m]

FORCE AND MOMENT VALUES ARE RELATIVE TO CENTER OF INLET AND OUTLET PORT FACES.

REVISION HISTORY						
CHG NO	ZONE	REV	DESCRIPTION	DATE	BY	APPROVED
01-0492	ALL	1	ADDED DIMENSIONS FOR VERTICAL MOUNTING USING BRACKET ADAPTER MOUNTING HOLES & ADDED NOTE CONCERNING MOTOR FLANGE DIAMETERS	10-16-01	DMM	DMM

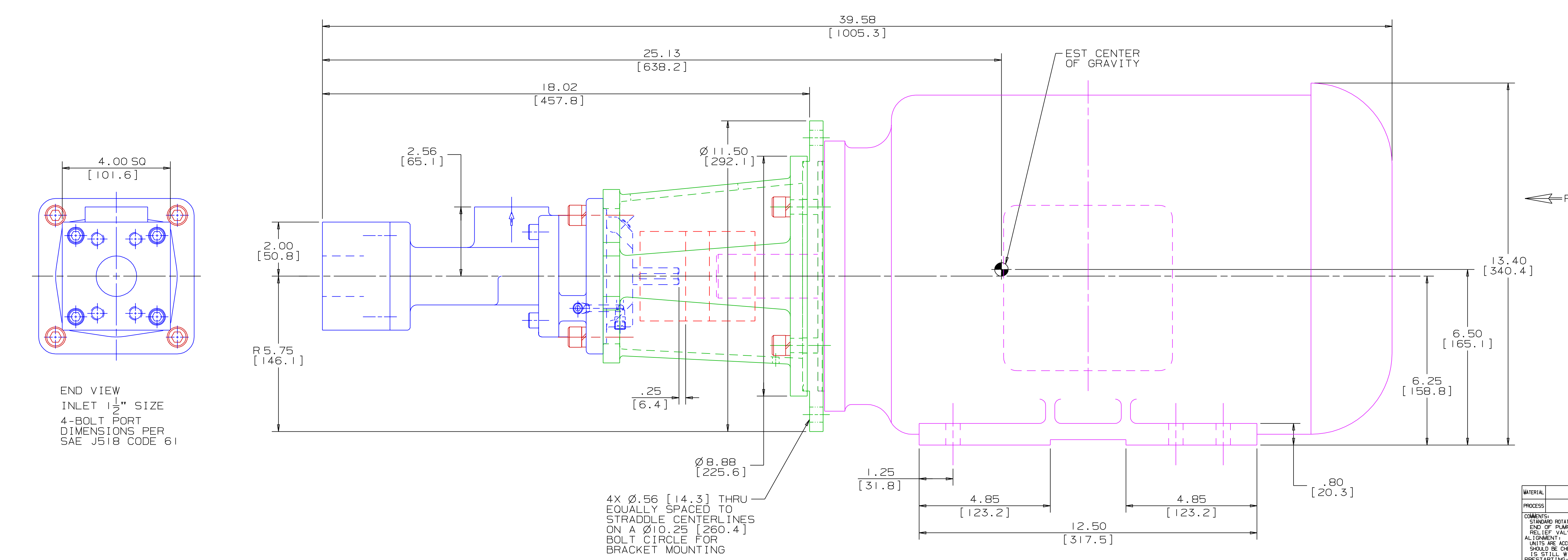
ITEM	DESCRIPTION	APPROXIMATE WEIGHT		MATERIAL
		LBS	KG	
1	MOTOR (254TC & 256TC)	298.0	135.1	
2	PUMP	34.0	15.4	
3	COUPLING, LOVEJOY L-110	6.0	2.7	
4	BRACKET	5.0	2.3	ALUMINUM
5	BRACKET ADAPTER	1.0	0.5	ALUMINUM
TOTAL		344.0	156.0	

DRIVER DIMENSIONS MAY VARY WITH TYPE AND MAKE OF DRIVER. THE MOTOR MOUNTING FLANGE DIAMETER VARIES SIGNIFICANTLY FOR SOME MANUFACTURERS WHICH CAN PREVENT THE USE OF THE VERTICAL MOUNTING HOLES IN THE ADAPTER PLATE. CHECK THE MOTOR MANUFACTURER DIMENSIONS TO MAKE SURE THE MOTOR FLANGE DIAMETER (BD) DOES NOT EXCEED 9 1/2" IF USING BRACKET MOUNTING.



CUSTOMER NAME	-----
CUSTOMER PO NUMBER	-----
CUSTOMER PART NUMBER	-----
UNIT BOM NUMBER	-----
PUMP TYPE	-----
SHAFT ROTATION	-----
INLET PORT ORIENTATION	-----
OUTLET PORT ORIENTATION	-----
INLET ADAPTER OPTION	-----
OUTLET ADAPTER OPTION	-----
MOTOR MANUFACTURER	-----
TYPE	-----
FRAME	-----
POWER	-----
ROTATING SPEED	-----
PHASE(S)	-----
FREQUENCY	-----
VOLTAGE	-----
CONDUIT BOX POSITION	-----
MOTOR INSTALLED BY	-----
CERTIFIED BY	-----
IMO ORDER NUMBER	-----
CERTIFICATION DATE	-----
CERTIFICATION REV. NO.	-----

- NOTES:
- UNLESS OTHERWISE SPECIFIED, ALL DIMENSIONS ARE IN INCHES. DIMENSIONS IN [] ARE MILLIMETERS.
 - THIS IS A STANDARD PRE-ENGINEERED UNIT OUTLINE. ANY CHANGES OUTSIDE OF THE CERTIFICATION BLOCK WILL REQUIRE A NEW DRAWING ASSIGNMENT.
 - APPROXIMATE WEIGHT AND ESTIMATED C/G DO NOT INCLUDE OPTIONAL ADAPTERS OR OPTIONAL RELIEF VALVE.
 - TO MAXIMIZE SEAL LIFE, SEAL VENT MUST BE ORIENTED UPWARD (12 O'CLOCK) WHEN PUMP IS INSTALLED HORIZONTALLY. VENT ORIENTATION IS NOT CRITICAL WHEN PUMP IS INSTALLED WITH SHAFT VERTICALLY UPWARD.
 - ALTERNATE PORT ORIENTATIONS ARE PROVIDED IF SPECIFIED ON ORDER. AVAILABLE ORIENTATIONS ARE 3, 6, 9, AND 12 O'CLOCK.



STANDARD ROTATION IS COUNTERCLOCKWISE WHEN VIEWED FROM COUPLING END OF PUMP. SUCTION STRAINER AND DISCHARGE RELIEF VALVE MUST BE PROVIDED. UNITS ARE ACCURATELY ALIGNED AT THE FACTORY. ALIGNMENT SHOULD BE CHECKED BEFORE STARTING TO ENSURE THAT IT IS STILL WITHIN .005 [0.13] F.T.M. FLUSH SUCTION PIPING BEFORE CONNECTING PUMP. PRIME AND VENT PUMP. DO NOT START PUMP WITH VALVES CLOSED. READ INSTRUCTION MANUAL FOR DETAILS BEFORE STARTING.

WEB ADDRESS: WWW. IMO-PUMP.COM	EMAIL: IMO.PUMP@COLFAXCORP.COM
DRAWN DMM 8-26-01	CHECKED DMM 9-26-01
APPD DMM 9-26-01	METHODS
Imo Pump 1710 Airport Road PO Box 5020 Monroe, NC USA 28111.5020	
TITLE: OUTLINE UNIT STANDARD (STEEL) AA3G / S 118	
NO. MILL PROJECTION F. FIRST ORDER USED ON	SCALE: 1/2 WEIGHT: SEE ABOVE SHEET: 1 OF 1

STEEL 3G-118 UNIT