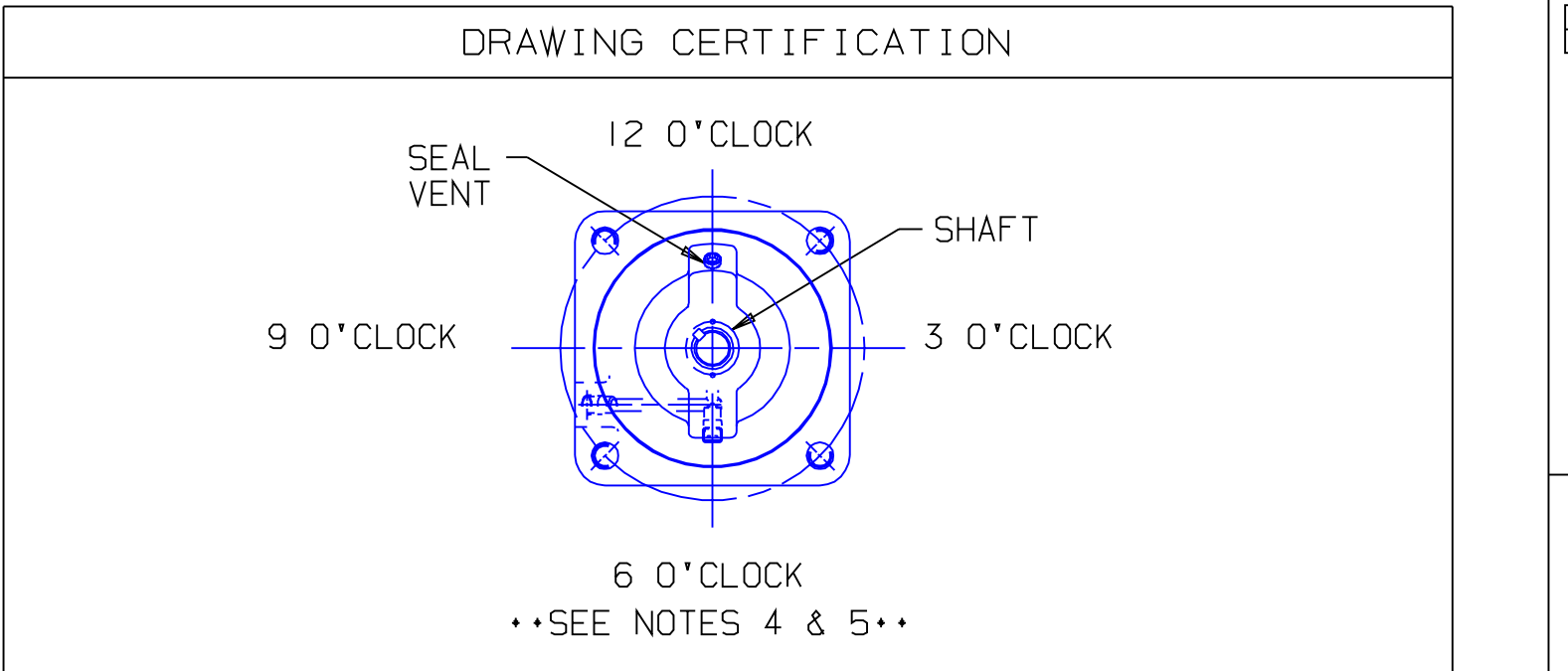
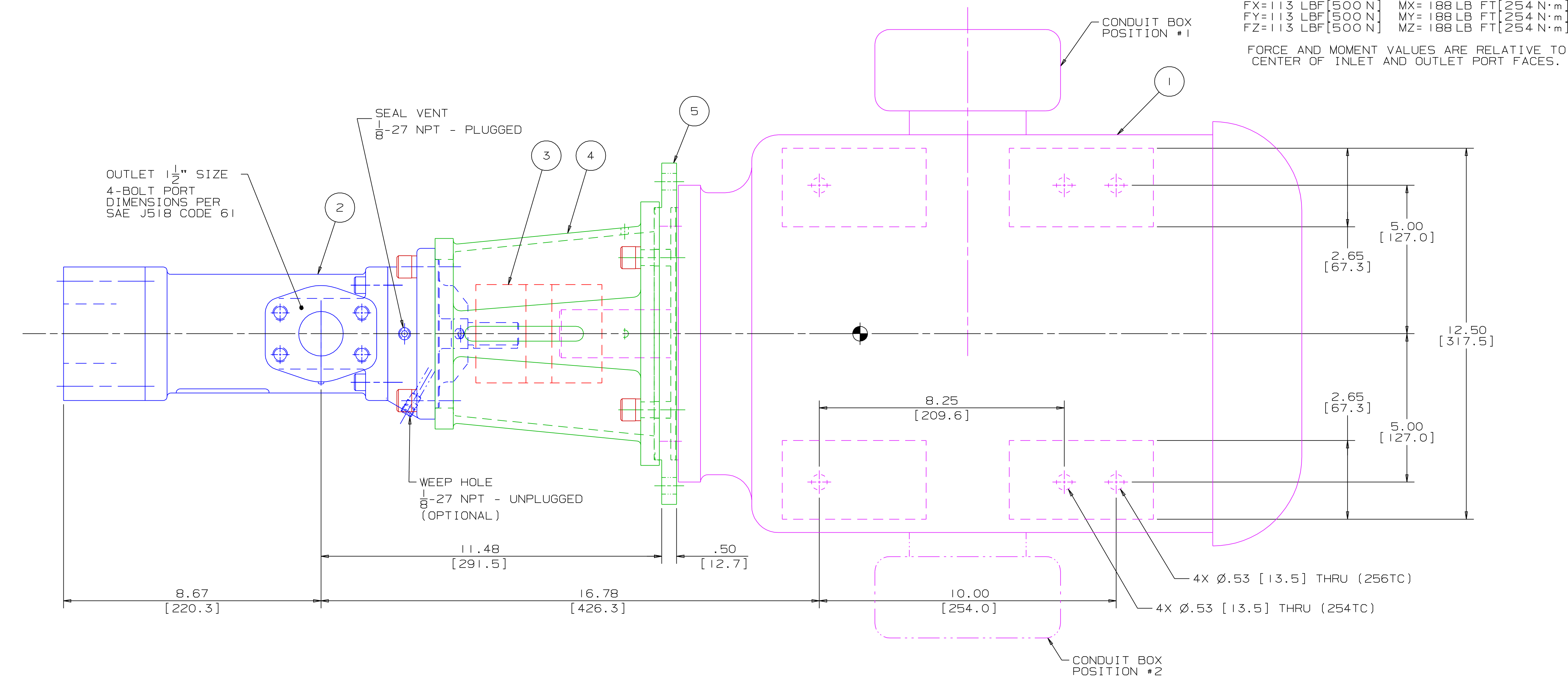


REVISION HISTORY					
CHG NO	ZONE	REV	DESCRIPTION	DATE	BY / APPROVED
01-0492	ALL	1	ADDED DIMENSIONS FOR VERTICAL MOUNTING USING BRACKET ADAPTER MOUNTING HOLES & ADDED NOTE CONCERNING MOTOR FLANGE DIAMETERS	10-16-01	DMM / DMM

ITEM	DESCRIPTION	APPROXIMATE WEIGHT		MATERIAL
		LBS	KG	
1	MOTOR (254TC & 256TC)	298.0	135.1	
2	PUMP	44.0	20.0	
3	COUPLING, LOVEJOY L-110	6.0	2.7	
4	BRACKET	5.0	2.3	ALUMINUM
5	BRACKET ADAPTER	1.0	0.5	ALUMINUM
TOTAL		354.0	160.6	

DRIVER DIMENSIONS MAY VARY WITH TYPE AND MAKE OF DRIVER. THE MOTOR MOUNTING FLANGE DIAMETER VARIES SIGNIFICANTLY FOR SOME MANUFACTURERS WHICH CAN PREVENT THE USE OF THE VERTICAL MOUNTING HOLES IN THE ADAPTER PLATE. CHECK THE MOTOR MANUFACTURER DIMENSIONS TO MAKE SURE THE MOTOR FLANGE DIAMETER (BD) DOES NOT EXCEED 9 1/2" IF USING BRACKET MOUNTING.



CUSTOMER NAME -----

CUSTOMER PO NUMBER -----

CUSTOMER PART NUMBER -----

UNIT BOM NUMBER -----

PUMP TYPE -----

SHAFT ROTATION -----

INLET PORT ORIENTATION -----

OUTLET PORT ORIENTATION -----

INLET ADAPTER OPTION -----

OUTLET ADAPTER OPTION -----

MOTOR MANUFACTURER -----

TYPE -----

FRAME -----

POWER -----

ROTATING SPEED -----

PHASE(S) -----

FREQUENCY -----

VOLTAGE -----

CONDUIT BOX POSITION -----

MOTOR INSTALLED BY -----

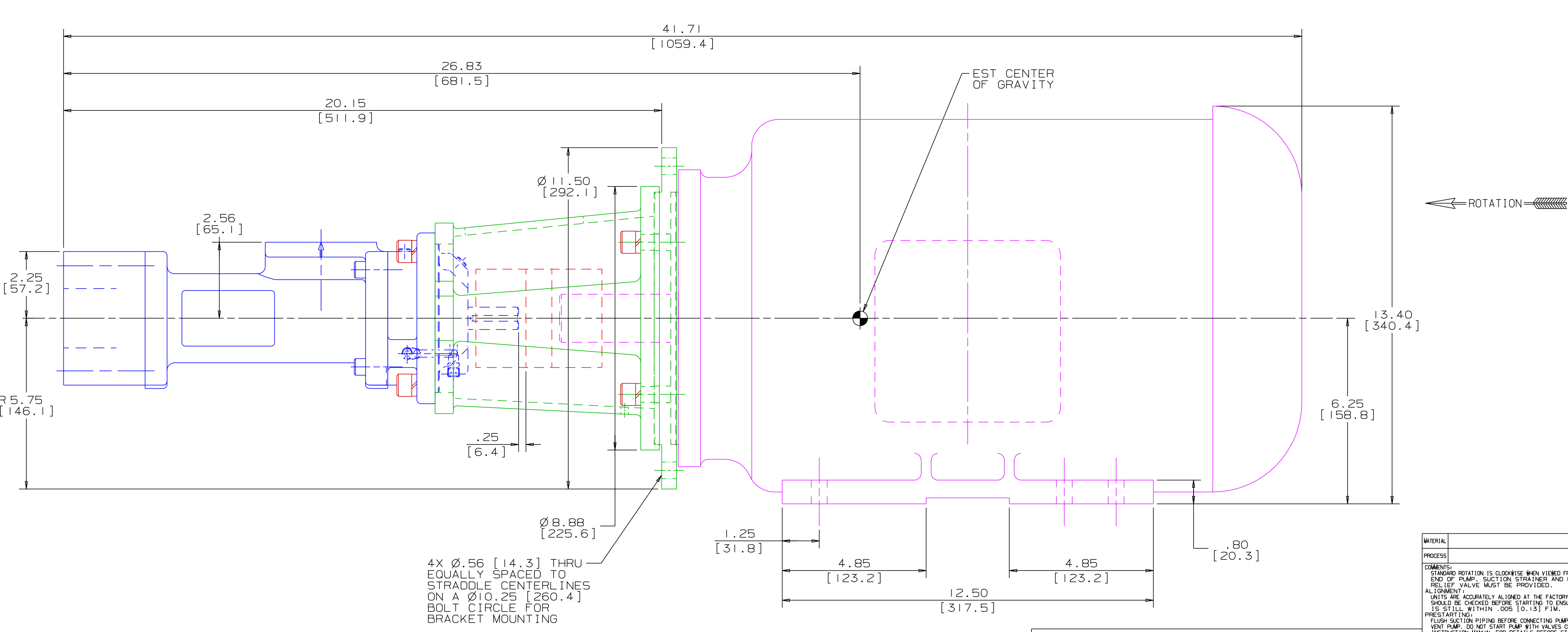
CERTIFIED BY -----

IMO ORDER NUMBER -----

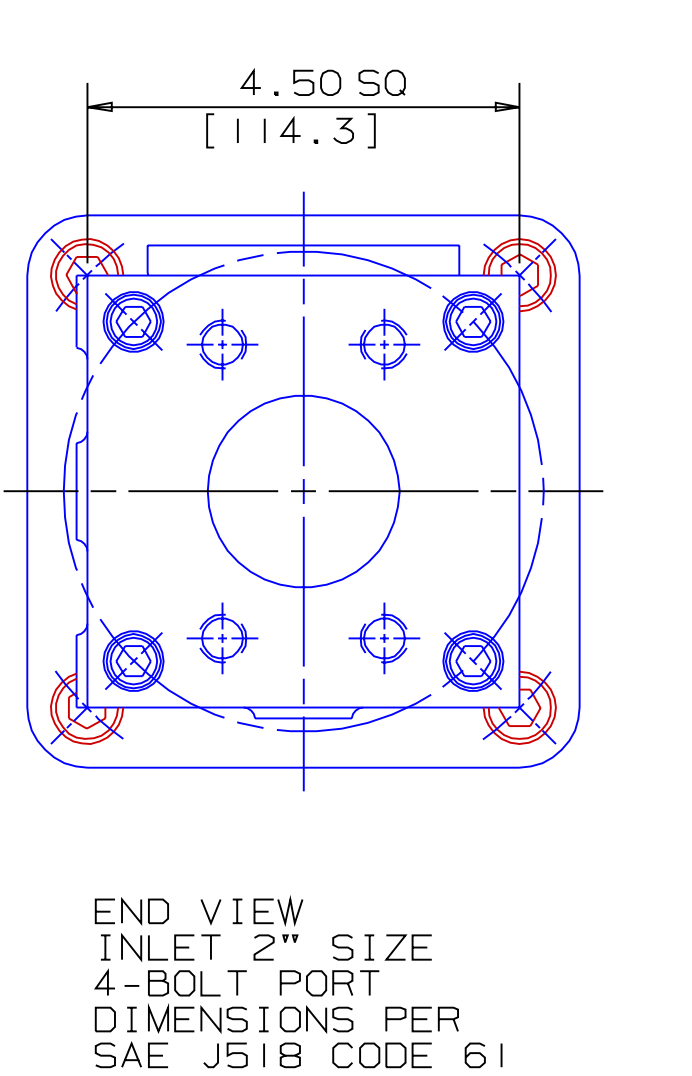
CERTIFICATION DATE -----

CERTIFICATION REV. NO. -----

NOTES:



- NOTES:
- UNLESS OTHERWISE SPECIFIED, ALL DIMENSIONS ARE IN INCHES. DIMENSIONS IN [] ARE MILLIMETERS.
 - THIS IS A STANDARD PRE-ENGINEERED UNIT OUTLINE. ANY CHANGES OUTSIDE OF THE CERTIFICATION BLOCK WILL REQUIRE A NEW DRAWING ASSIGNMENT.
 - APPROXIMATE WEIGHT AND ESTIMATED C/G DO NOT INCLUDE OPTIONAL ADAPTERS OR OPTIONAL RELIEF VALVE.
 - TO MAXIMIZE SEAL LIFE, SEAL VENT MUST BE ORIENTED UPWARD (12 O'CLOCK) WHEN PUMP IS INSTALLED HORIZONTALLY. VENT ORIENTATION IS NOT CRITICAL WHEN PUMP IS INSTALLED WITH SHAFT VERTICALLY UPWARD.
 - ALTERNATE PORT ORIENTATIONS ARE PROVIDED IF SPECIFIED ON ORDER. AVAILABLE ORIENTATIONS ARE 3,6,9, AND 12 O'CLOCK.



WEB ADDRESS: WWW. IMO-PUMP.COM EMAIL: IMO.PUMP@COLFAXCORP.COM

DRAWN DMM 8-17-01

CHECKED DMM 9-27-01

APPD DMM 9-27-01

METHODS

IMo Pump
1710 Airport Road
PO Box 5020
Monroe, NC USA
28111.5020

TITLE
OUTLINE UNIT STANDARD (STEEL)
AA3G / - S - 143 / 162 -

NO. MILL PROJECTION F. FIRST ORDER SIZE CAGE CODE DWG NO.
EB122A F 59180 SDD20239

SCALE 1/2 WEIGHT SEE ABOVE SHEET 1 OF 1

STEEL 3G-143/162 UNIT