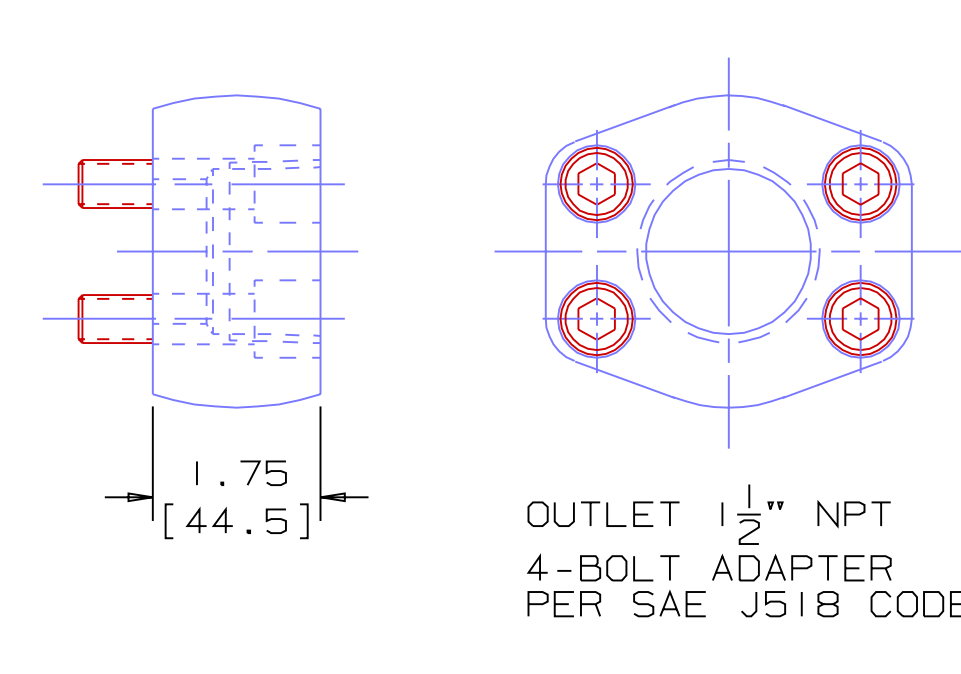
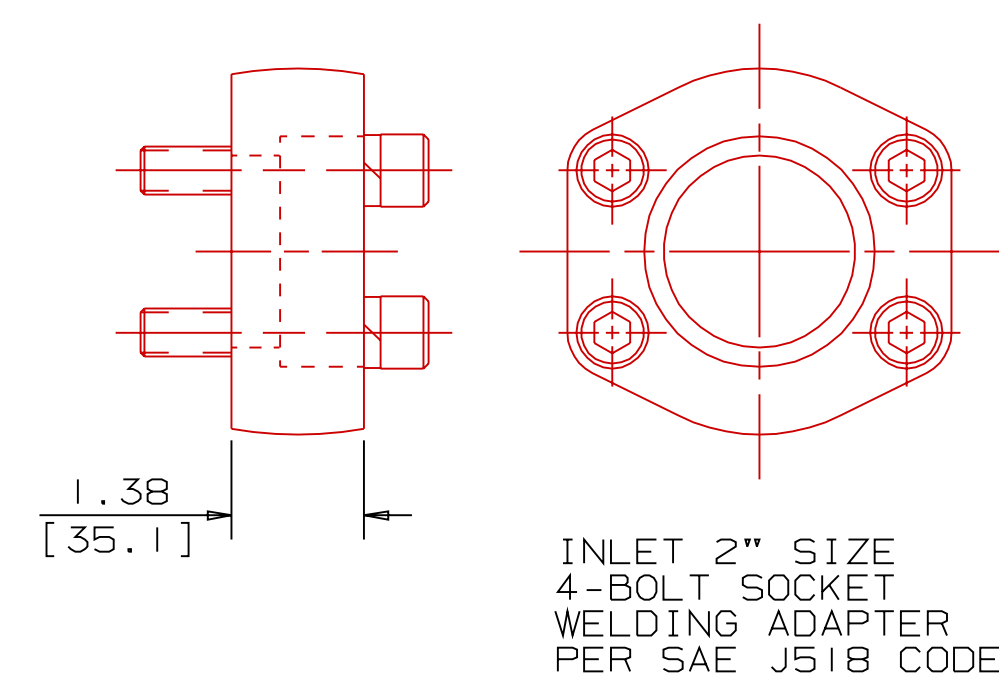


INLET 2" NPT
4-BOLT ADAPTER
PER SAE J518 CODE 61

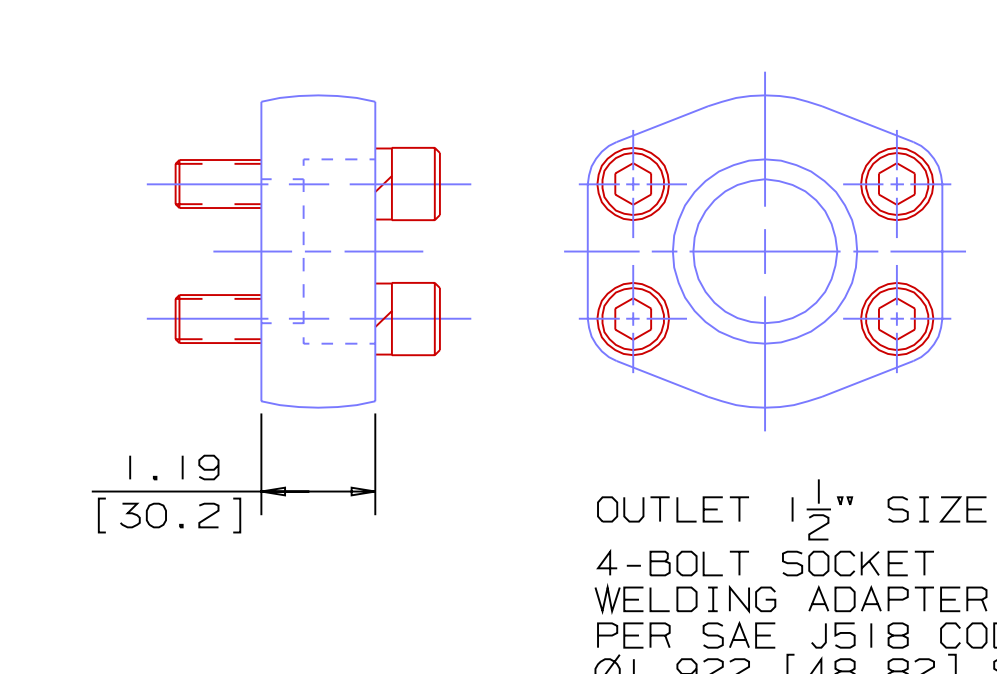


OUTLET 1/2" NPT
4-BOLT ADAPTER
PER SAE J518 CODE 61

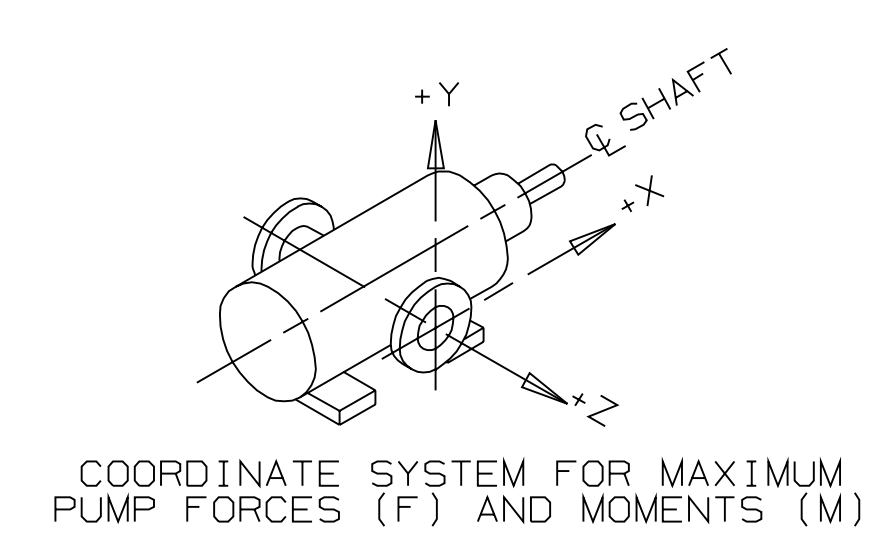
OPTIONAL PORT ADAPTERS



INLET 2" SIZE
4-BOLT SOCKET
WELDING ADAPTER
PER SAE J518 CODE 61
Ø2.406 [61.1] SOCKET
.88 [22.4] DEEP



OUTLET 1/2" SIZE
4-BOLT SOCKET
WELDING ADAPTER
PER SAE J518 CODE 61
Ø1.922 [48.82] SOCKET
.75 [19.1] DEEP



INLET:
FX=150 LBF [667 N] MX=250 LB FT [339 N·m]
FY=150 LBF [667 N] MY=250 LB FT [339 N·m]
FZ=150 LBF [667 N] MZ=250 LB FT [339 N·m]

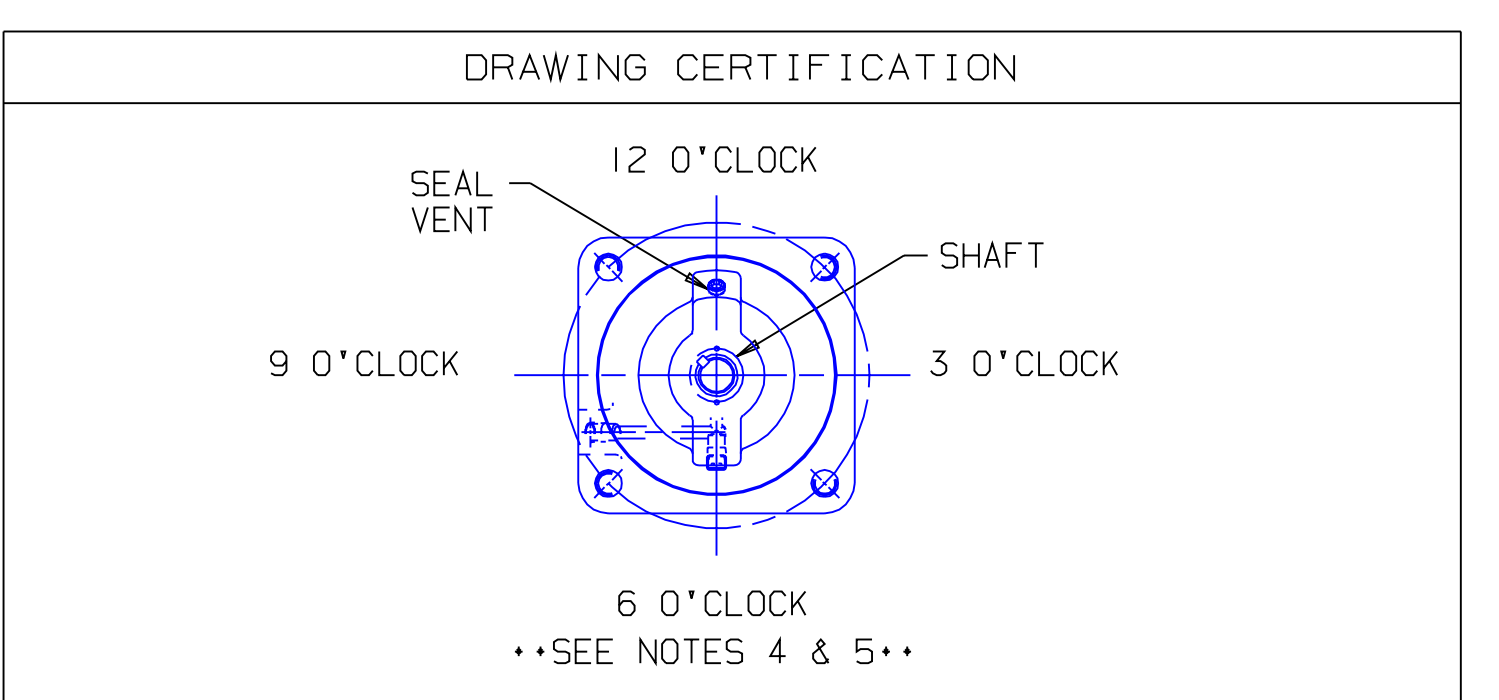
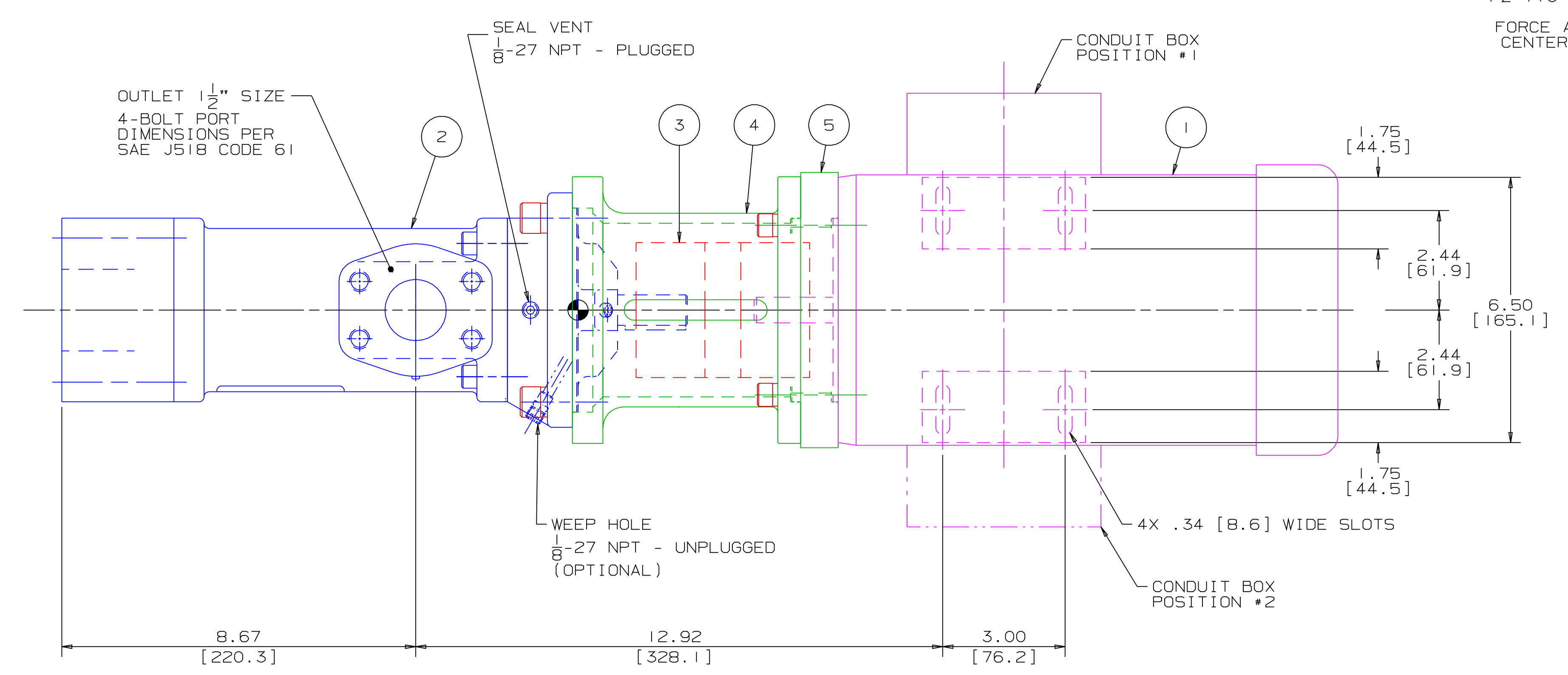
OUTLET:
FX=113 LBF [500 N] MX=188 LB FT [254 N·m]
FY=113 LBF [500 N] MY=188 LB FT [254 N·m]
FZ=113 LBF [500 N] MZ=188 LB FT [254 N·m]

FORCE AND MOMENT VALUES ARE RELATIVE TO CENTER OF INLET AND OUTLET PORT FACES.

REVISION HISTORY					
CHG NO	ZONE	REV	DESCRIPTION	DATE	BY / APPROVED
01-0503	A2,D2	1	REMOVED NOTE 6 & REVISED DRAWING CERTIFICATION BLOCK	10-17-01	DMM / DMM

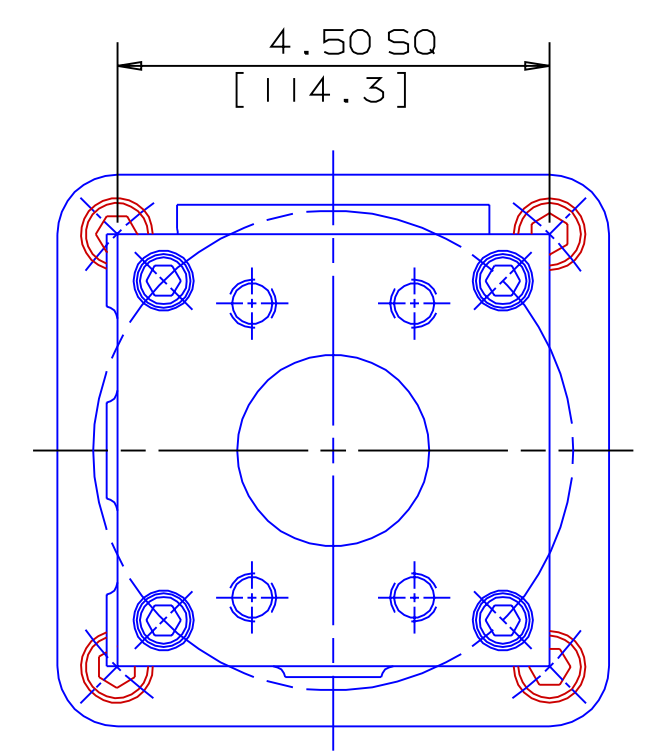
ITEM	DESCRIPTION	APPROXIMATE WEIGHT		MATERIAL
		LBS	KG	
1	MOTOR (56C)	25.0	11.3	
2	PUMP	44.0	20.0	
3	COUPLING, LOVEJOY L-110	6.0	2.7	
4	BRACKET	2.2	1.0	ALUMINUM
5	BRACKET ADAPTER	1.0	0.5	ALUMINUM
TOTAL		78.2	35.5	

DRIVER DIMENSIONS MAY VARY WITH TYPE AND MAKE OF DRIVER

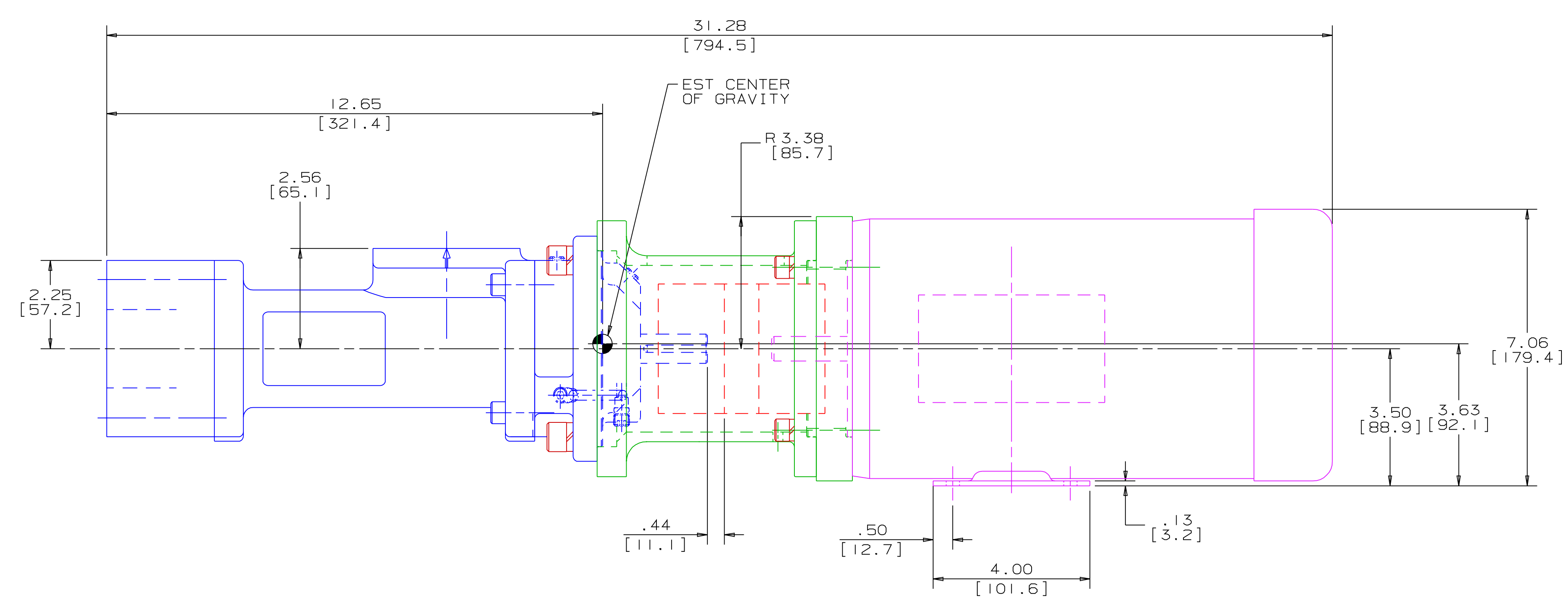


CUSTOMER NAME -----
 CUSTOMER PO NUMBER -----
 CUSTOMER PART NUMBER -----
 UNIT BOM NUMBER -----
 PUMP TYPE -----
 SHAFT ROTATION -----
 INLET PORT ORIENTATION -----
 OUTLET PORT ORIENTATION -----
 INLET ADAPTER OPTION -----
 OUTLET ADAPTER OPTION -----
 MOTOR MANUFACTURER -----
 TYPE -----
 FRAME -----
 POWER -----
 ROTATING SPEED -----
 PHASE(S) -----
 FREQUENCY -----
 VOLTAGE -----
 CONDUIT BOX POSITION -----
 MOTOR INSTALLED BY -----
 CERTIFIED BY -----
 IMO ORDER NUMBER -----
 CERTIFICATION DATE -----
 CERTIFICATION REV. NO. -----

NOTES:
 1. UNLESS OTHERWISE SPECIFIED, ALL DIMENSIONS ARE IN INCHES. DIMENSIONS IN [] ARE MILLIMETERS.
 2. THIS IS A STANDARD PRE-ENGINEERED UNIT OUTLINE. ANY CHANGES OUTSIDE OF THE CERTIFICATION BLOCK WILL REQUIRE A NEW DRAWING ASSIGNMENT.
 3. APPROXIMATE WEIGHT AND ESTIMATED C/G DO NOT INCLUDE OPTIONAL ADAPTERS OR OPTIONAL RELIEF VALVE.
 4. TO MAXIMIZE SEAL LIFE, SEAL VENT MUST BE ORIENTED UPWARD (12 O'CLOCK) WHEN PUMP IS INSTALLED HORIZONTALLY. VENT ORIENTATION IS NOT CRITICAL WHEN PUMP IS INSTALLED WITH SHAFT VERTICALLY UPWARD.
 5. ALTERNATE PORT ORIENTATIONS ARE PROVIDED IF SPECIFIED ON ORDER. AVAILABLE ORIENTATIONS ARE 3,6,9, AND 12 O'CLOCK.



END VIEW
INLET 2" SIZE
4-BOLT PORT
DIMENSIONS PER
SAE J518 CODE 61



WEB ADDRESS: WWW.IMO-PUMP.COM		EMAIL: IMO.PUMP@COLFAXCORP.COM	
DRAWN	DMM 8-18-01	 Imo Pump 1710 Airport Road PO Box 5020 Monroe, NC USA 28111.5020	
CHECKED	DMM 9-27-01		
APPD	DMM 9-27-01		
METHODS		TITLE	AA3G / - S - 143 / 162 -
COMMENTS: STANDARD ROTATION IS CLOCKWISE WHEN VIEWED FROM COUPLING END OF PUMP. SUCTION STRAINER AND DISCHARGE RELIEF VALVE MUST BE PROVIDED. UNITS ARE ACCURATELY ALIGNED AT THE FACTORY. ALIGNMENT SHOULD BE CHECKED BEFORE STARTING TO ENSURE THAT IT IS STILL WITHIN .005 (0.13) F.T.M. PREPARE SUCTON PIPING BEFORE CONNECTING PUMP. PRIME AND VENT PUMP. DO NOT START PUMP WITH VALVES CLOSED. READ INSTRUCTION MANUAL FOR DETAILS BEFORE STARTING.		SIZE	59180 SDD20122
PROCESS		SCALE	1/2
MATERIAL		WEIGHT	SEE ABOVE
USED ON		SHEET	1 OF 1

STEEL 3G-143/162 UNIT