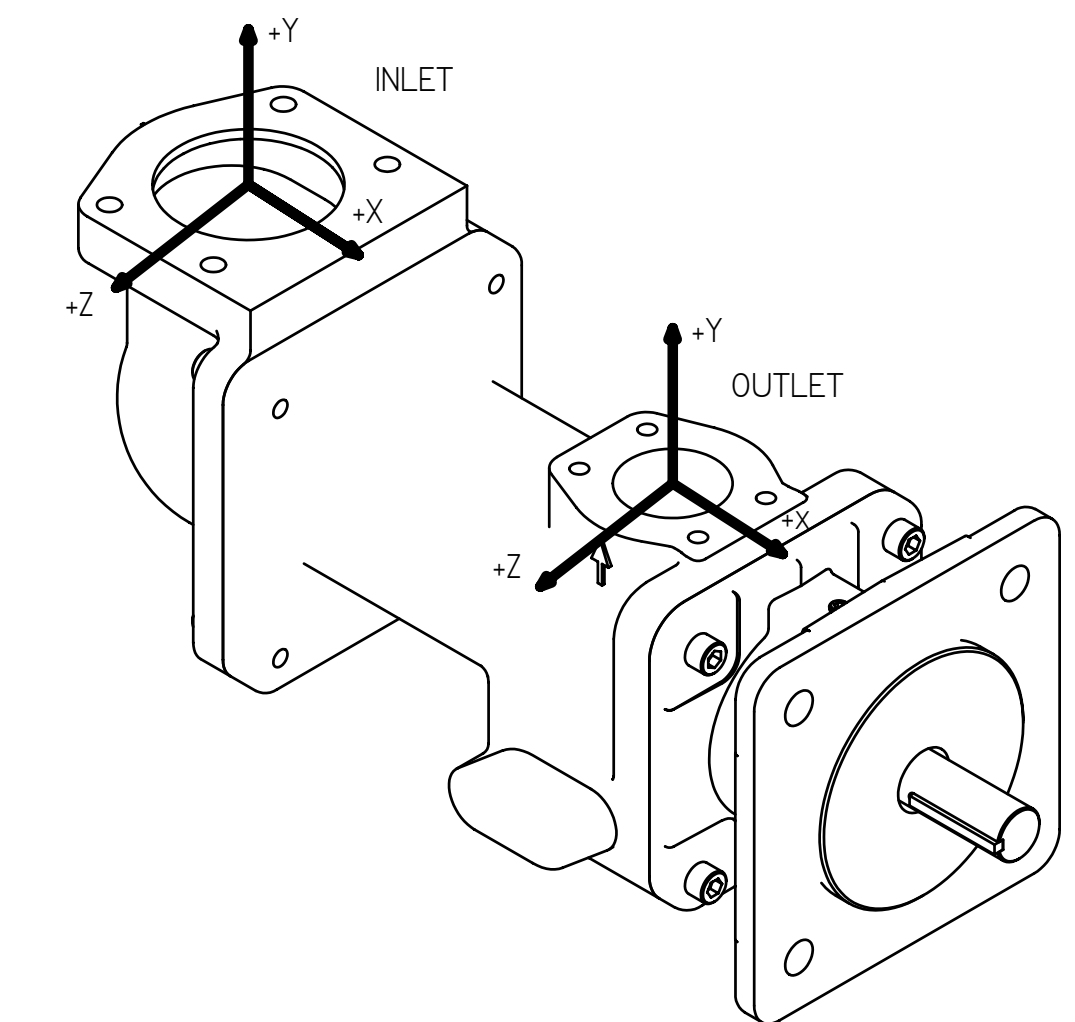
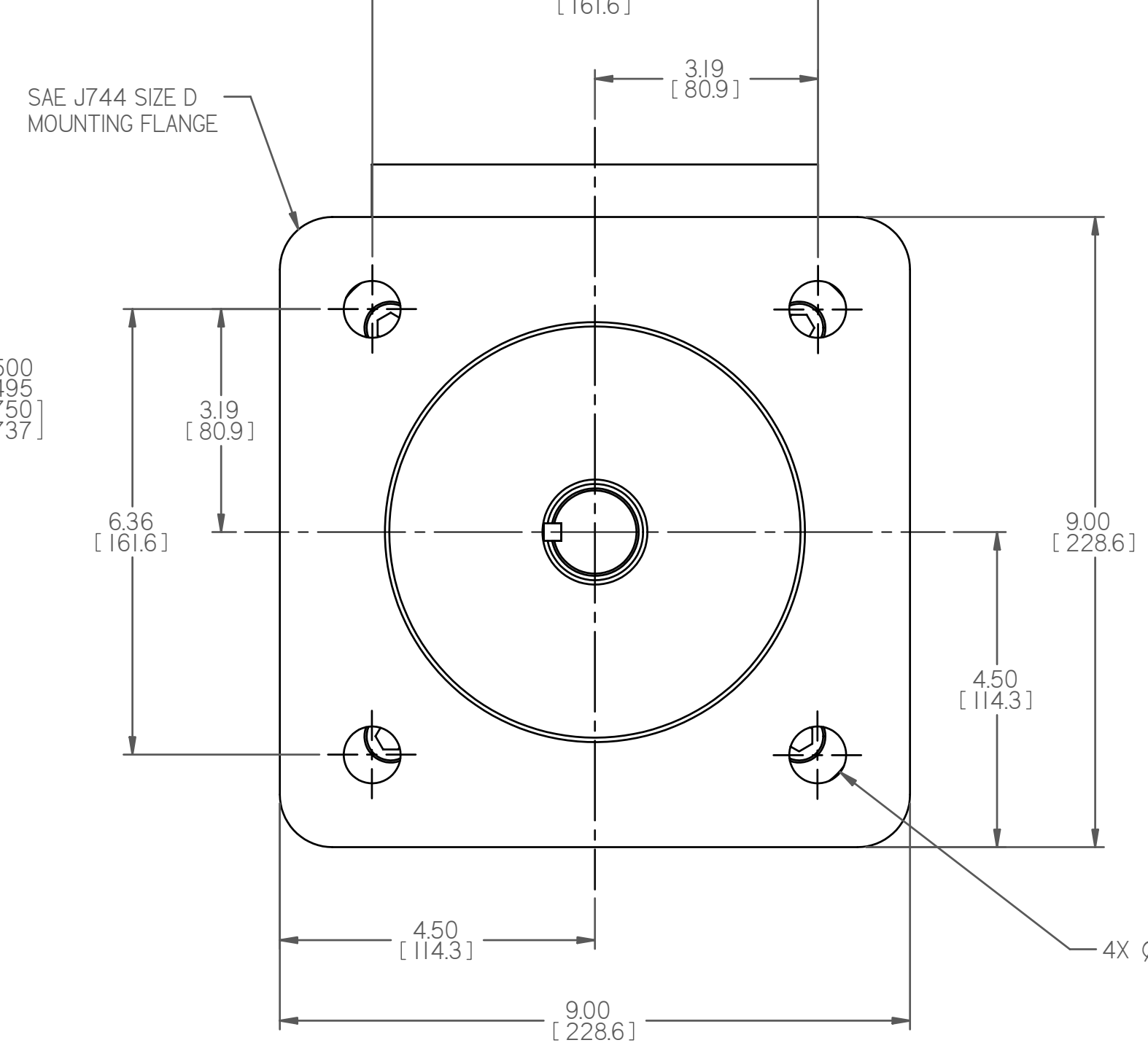
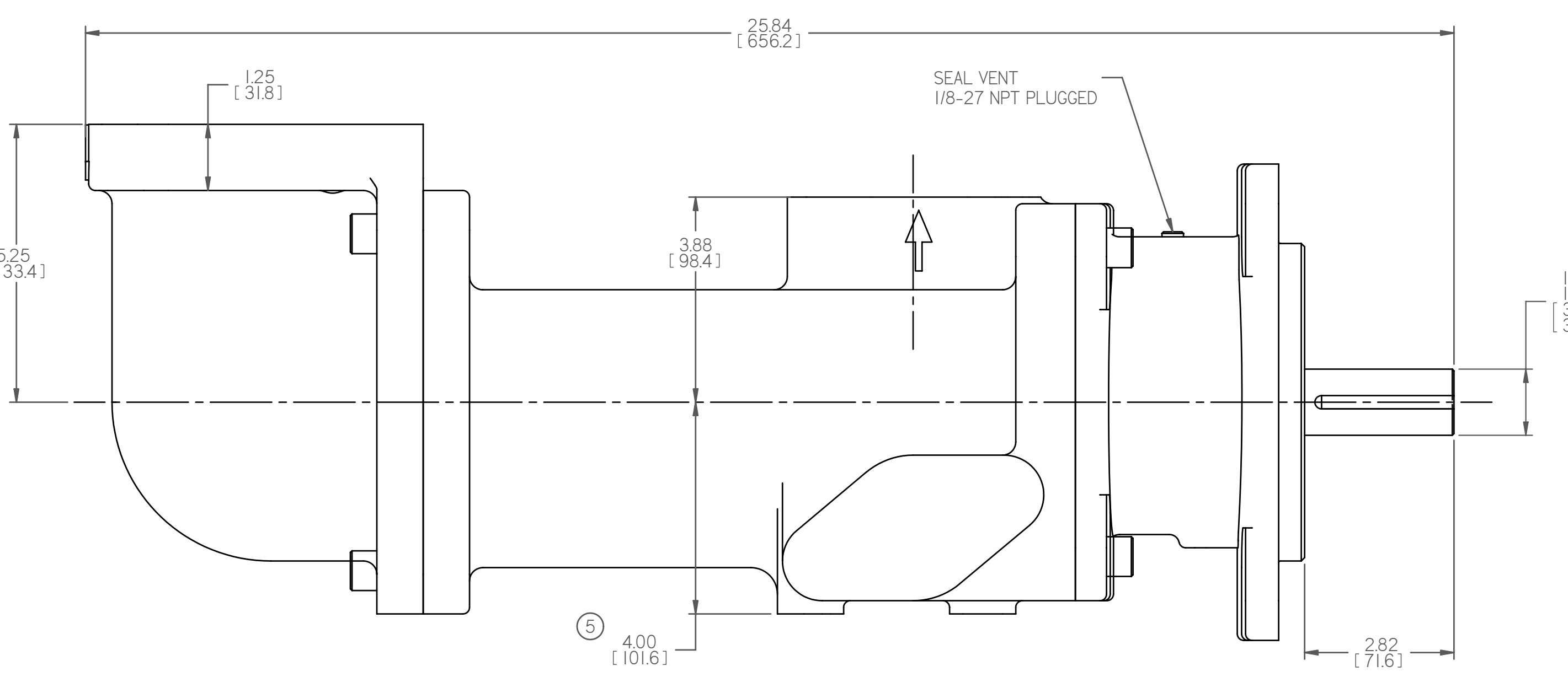
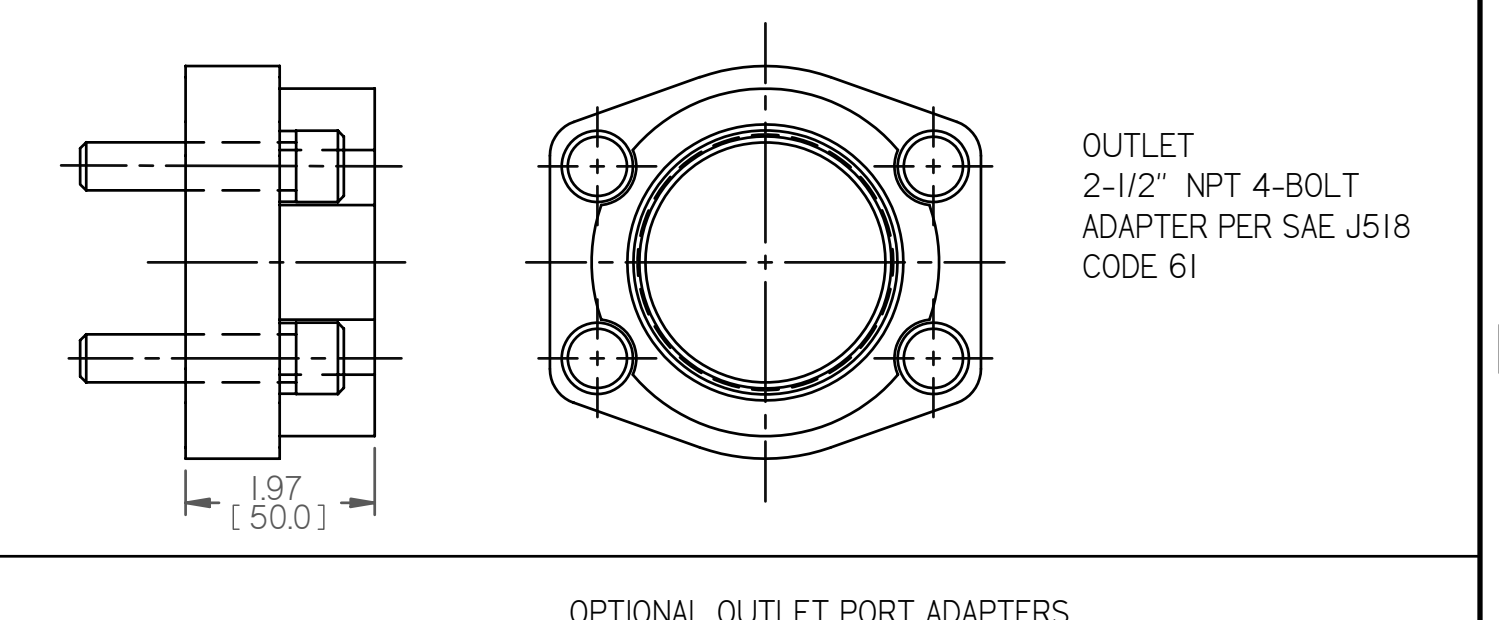
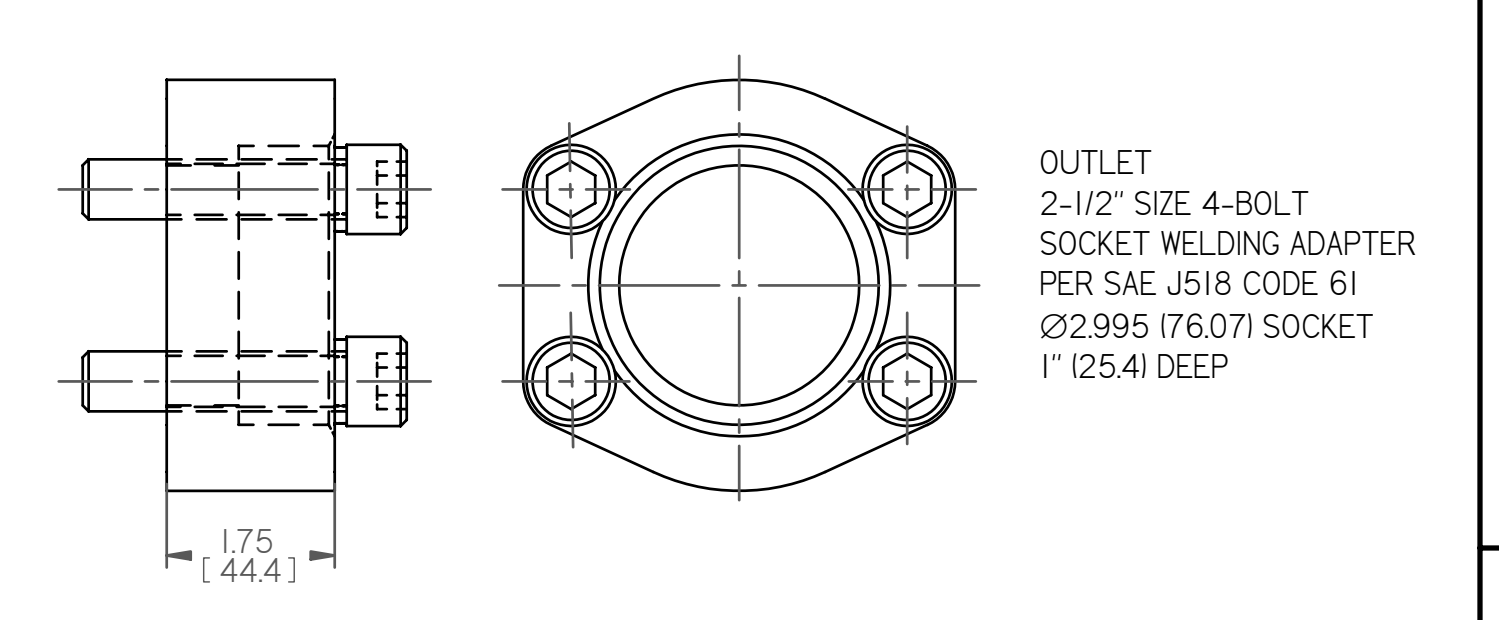
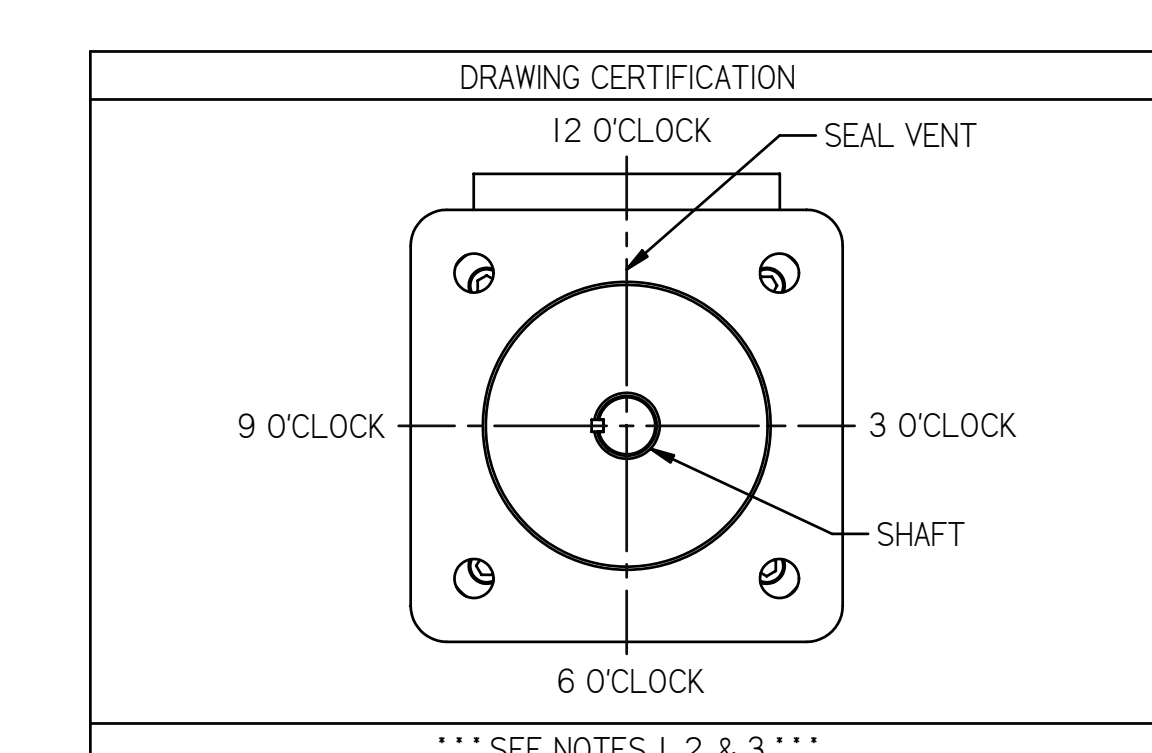
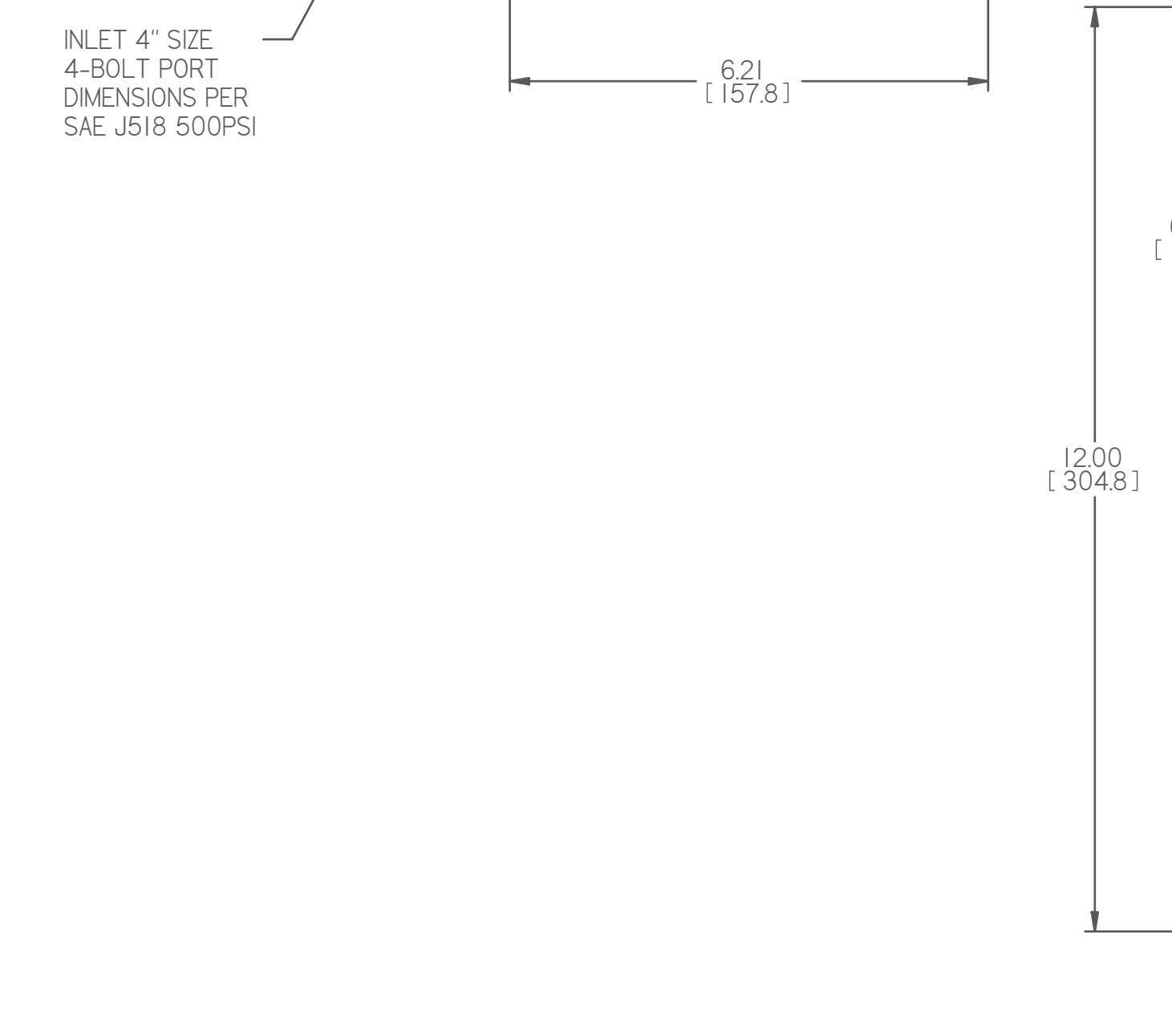
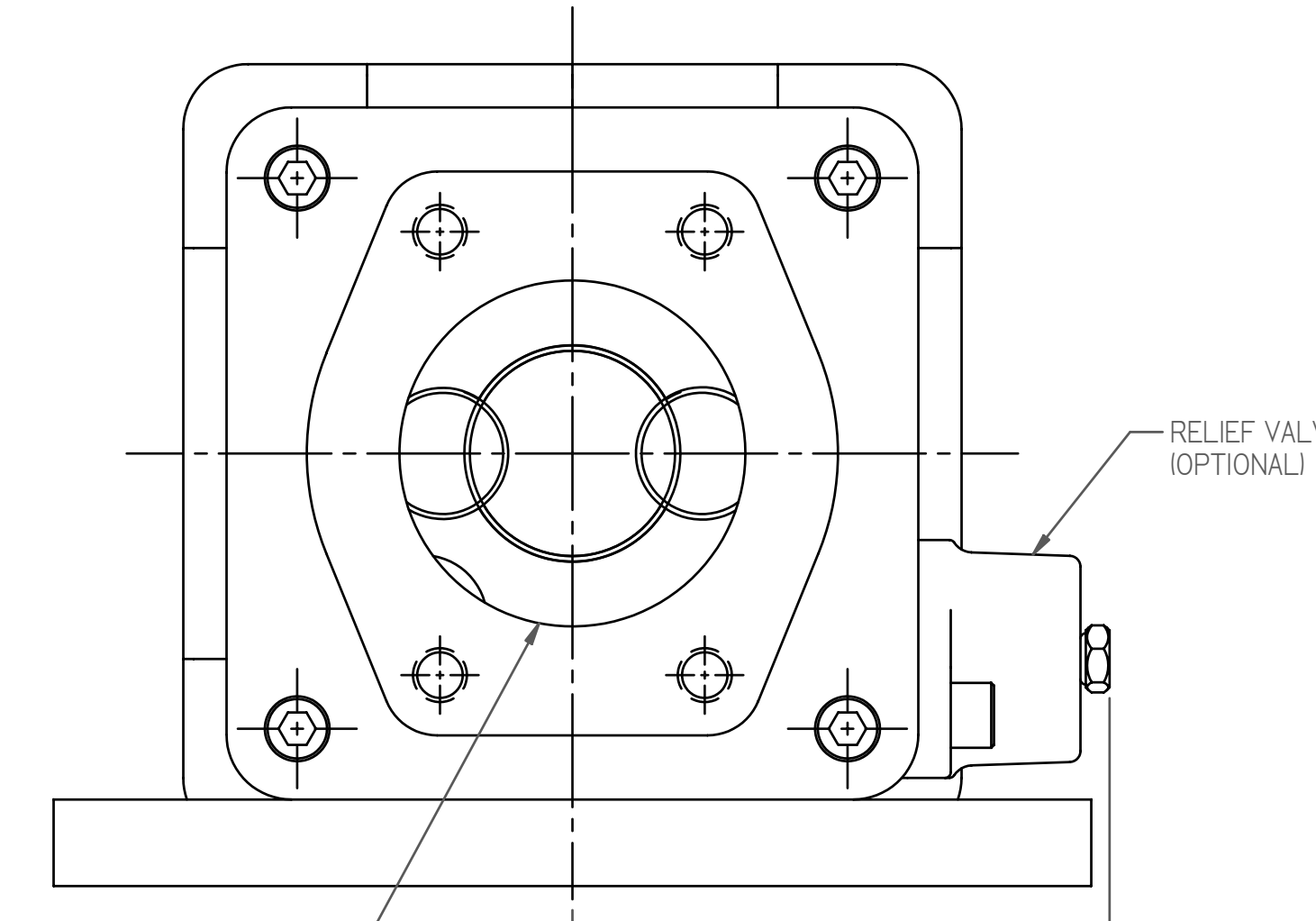
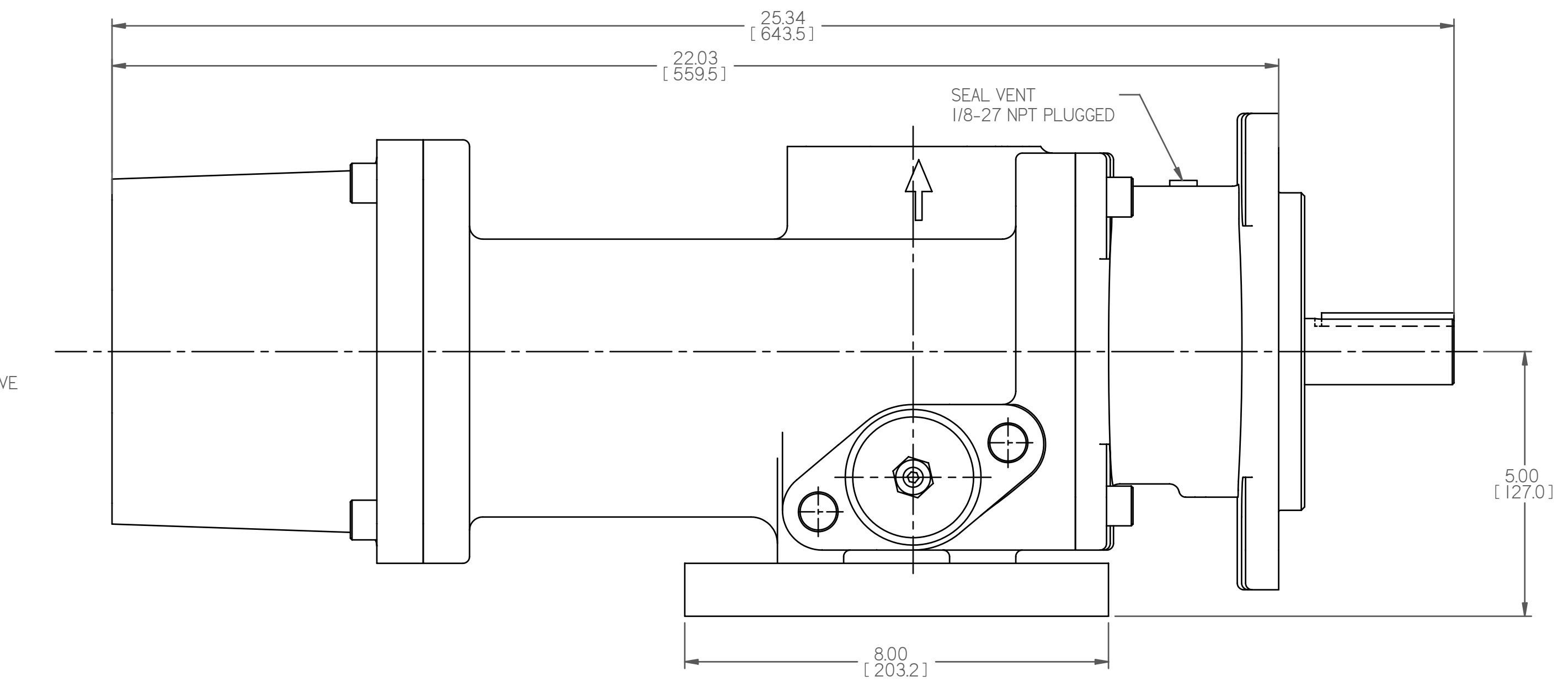


REVISION HISTORY					
CHG NO	ZONE	REV	DESCRIPTION	DATE	BY / APPROVED
05-0531	ALL	06	REVISED DIMENSIONS AND TABLES	12-07-05	ERH / ERH



VIEWS FOR ALTERNATIVE AXIAL INLET, FOOT MOUNT, WEEP HOLE, AND RELIEF VALVE CONFIGURATIONS



CUSTOMER NAME:

CUSTOMER PURCHASE ORDER NUMBER:

CUSTOMER PART NUMBER:

BILL OF MATERIAL NUMBER:

PUMP TYPE:

SHAFT ROTATION:

INLET PORT ORIENTATION:

OUTLET PORT ORIENTATION:

FOOT BRACKET ORIENTATION:

INLET PORT OPTION:

INLET ADAPTER OPTION:

OUTLET ADAPTER OPTION:

RELIEF VALVE SET PRESSURE:

IF APPLICABLE

OTHER INFORMATION

CERTIFIED BY:

CERTIFIED DATE:

IMO ORDER NUMBER:

DATA REVISION NUMBER:

INLET:

FX= 300 LBF [1334 N] MY= 500 LB FT [678 N-m]

FY= 300 LBF [1334 N] MZ= 500 LB FT [678 N-m]

FZ= 300 LBF [1334 N] MX= 500 LB FT [678 N-m]

OUTLET:

FX= 188 LBF [836 N] MY= 313 LB FT [424 N-m]

FY= 188 LBF [836 N] MZ= 313 LB FT [424 N-m]

FZ= 188 LBF [836 N] MX= 313 LB FT [424 N-m]

FORCE AND MOMENT VALUES ARE RELATIVE TO CENTER OF INLET AND OUTLET PORT FACES.

- NOTES:
- TO MAXIMIZE SEAL LIFE, SEAL VENT MUST BE ORIENTED UPWARD (12 O'CLOCK) WHEN PUMP IS INSTALLED HORIZONTALLY. VENT ORIENTATION IS NOT CRITICAL WHEN PUMP IS INSTALLED WITH SHAFT VERTICALLY UPWARD.
 - PORT, FOOT, AND SEAL VENT ORIENTATIONS ARE SUPPLIED AS SHOWN ON DRAWING UNLESS OTHERWISE SPECIFIED.
 - ALTERNATE PORT AND FOOT ORIENTATIONS ARE PROVIDED IF SPECIFIED ON ORDER. AVAILABLE ORIENTATIONS ARE 3, 6, 9, AND 12 O'CLOCK.
 - BOLT PATTERN FOR SAE 4-BOLT AXIAL INLET IS ALWAYS ORIENTED AS SHOWN WITH RESPECT TO OUTLET PORT.
 - APPROXIMATE PUMP WEIGHT (WITHOUT ADAPTERS):
FLANGE MOUNT PUMP-----190 LBS. [86.2 kgs]
FOOT MOUNT PUMP-----220 LBS. [99.8 kgs]
 - UNLESS OTHERWISE SPECIFIED, ALL DIMENSIONS ARE IN INCHES. DIMENSIONS IN [] ARE MILLIMETERS.

DRAWN	VAH	09-13-01	<p>IMO Pump 1710 Airport Road PO Box 5020 Monroe, NC USA 28111-5020</p>
CHECKED	DMM	11-21-01	
APPROVED	BES	11-21-01	
MATERIAL			TITLE
UNLESS OTHERWISE SPECIFIED ANSI Y14.8M-1994			OUTLINE STANDARD (IRON)
COMMENTS: SECTION STRAINER AND DISCHARGE RELIEF VALVE MUST BE PROVIDED PARTS ARE ACCURATELY ALIGNED AT THE FACTORY. ALIGNMENT SHOULD BE CHECKED BEFORE STARTING TO INSURE THAT IT IS STILL WITHIN .005 (0.127) MM. RECTIFYING: FLUSH SUCTION PIPING BEFORE CONNECTING PUMP. PRIME AND VENT PUMP. READ INSTRUCTION MANUAL FOR DETAILS BEFORE STARTING.			AA3G/-----[250]---
FIRST ORDER			SHEET NO
E1109A			F 59180
SCALE			1/2
WEIGHT			SEE NOTE 5
SHEET			1 OF 1

IRON 3G-250