

INLET:
 FX=37.5 LBF [167 N] MY=62.5 LB FT [84.7 N·m]
 FY=37.5 LBF [167 N] MZ=62.5 LB FT [84.7 N·m]
 FZ=37.5 LBF [167 N]

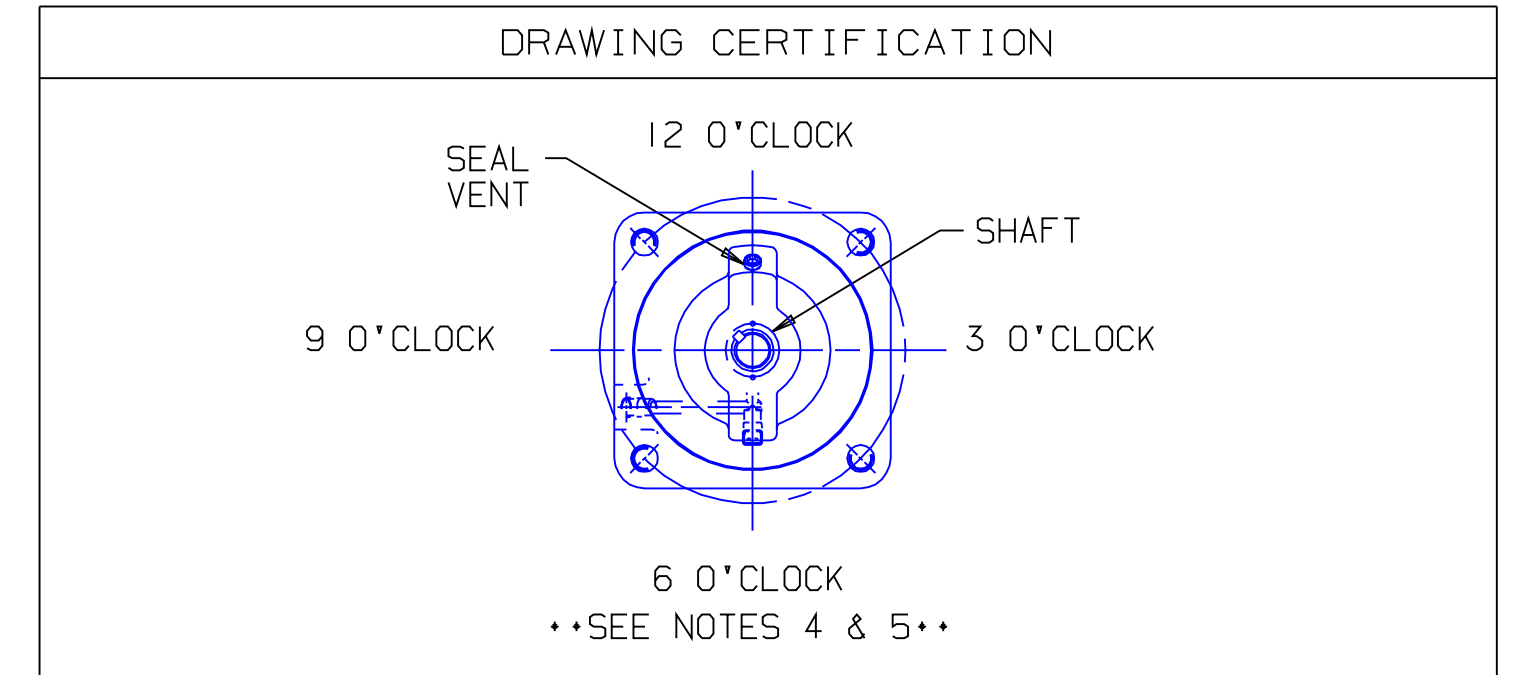
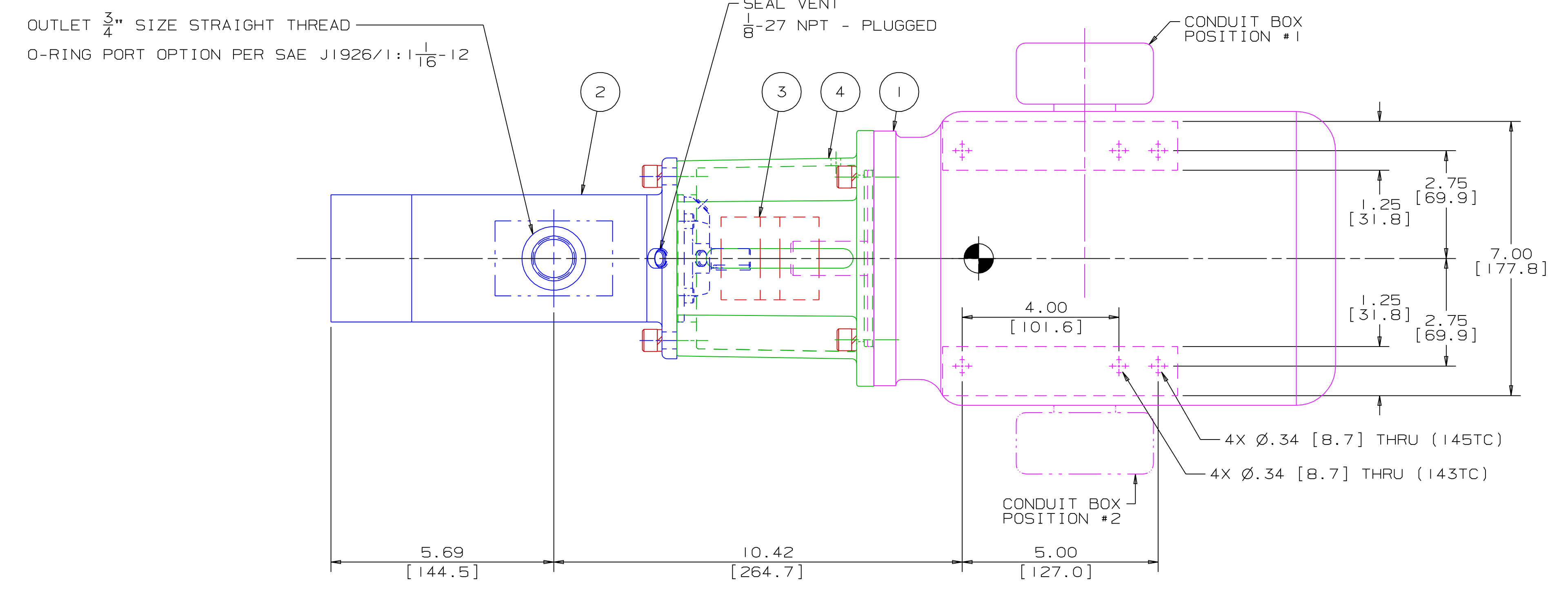
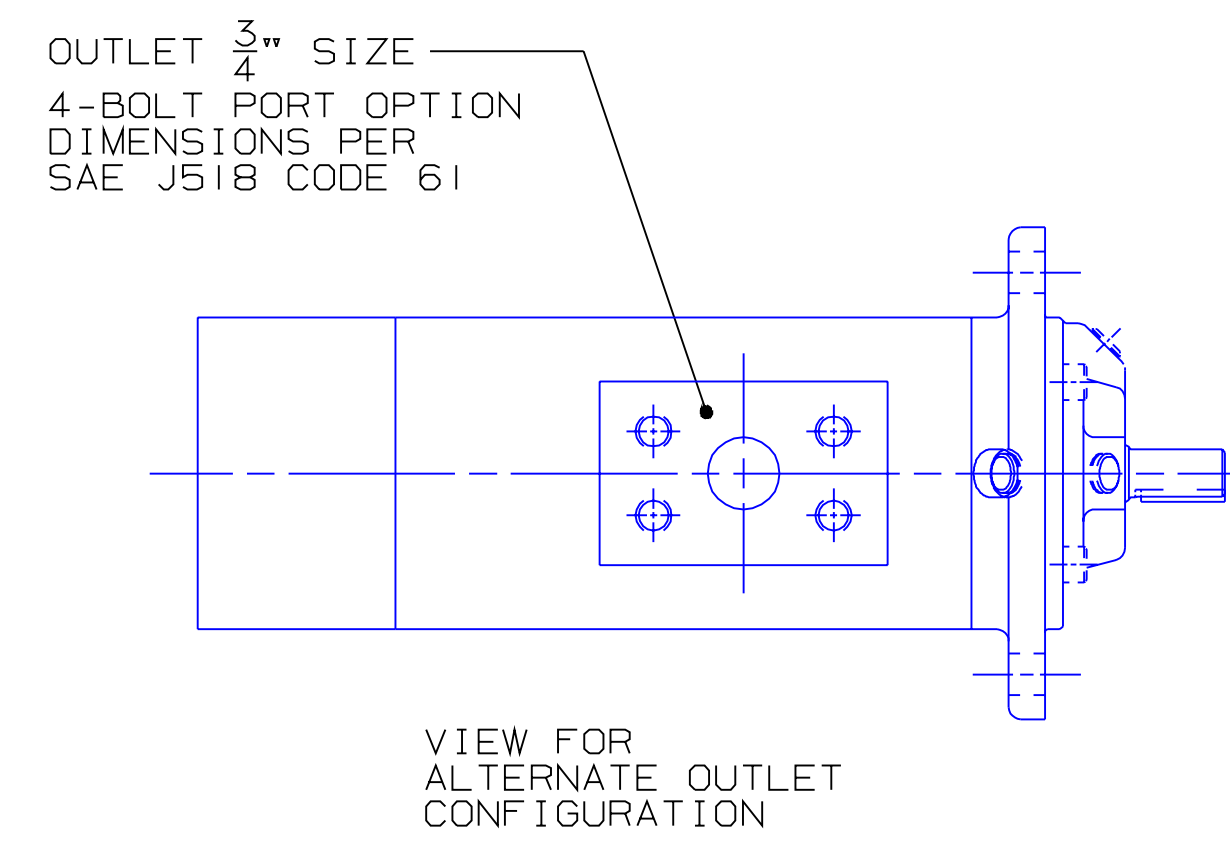
OUTLET:
 FX=28.1 LBF [125 N] MY=46.9 LB FT [63.6 N·m]
 FY=28.1 LBF [125 N] MZ=46.9 LB FT [63.6 N·m]
 FZ=28.1 LBF [125 N]

FORCE AND MOMENT VALUES ARE RELATIVE TO CENTER OF INLET AND OUTLET PORT FACES.

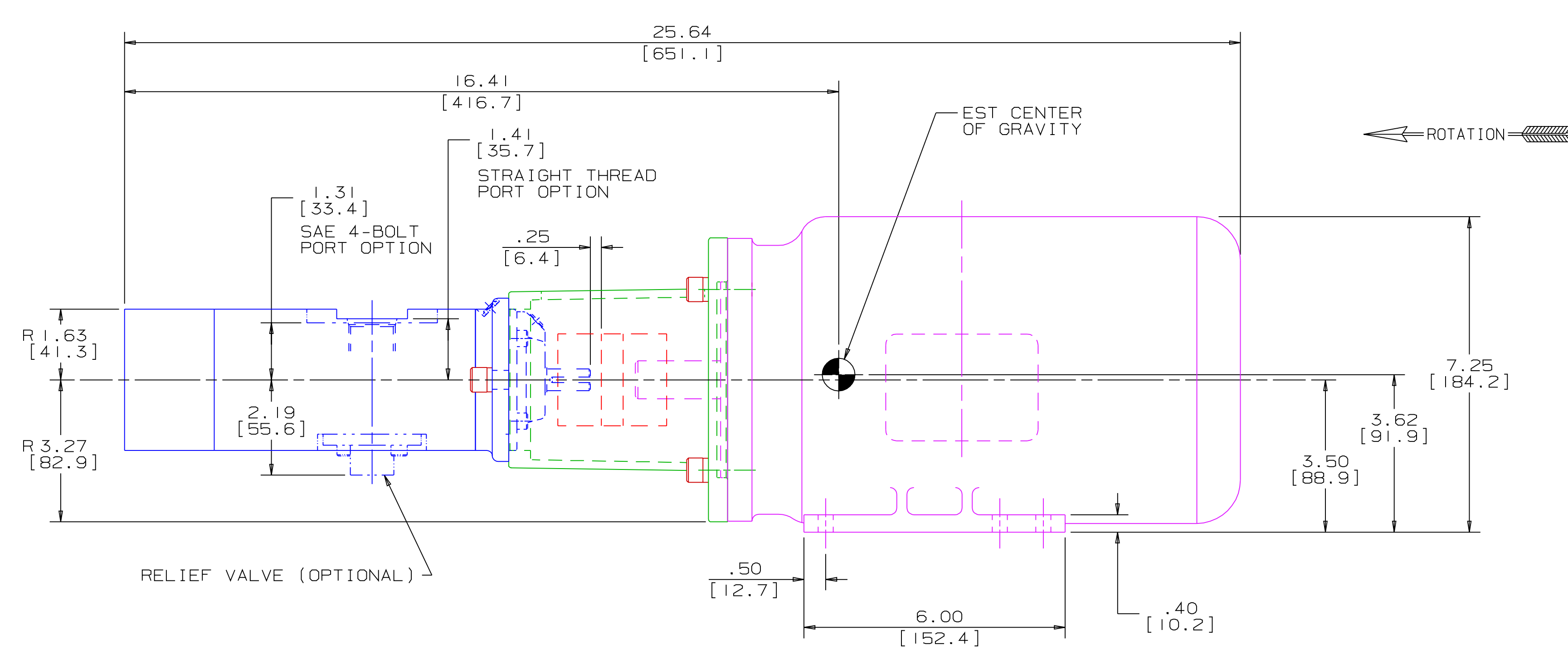
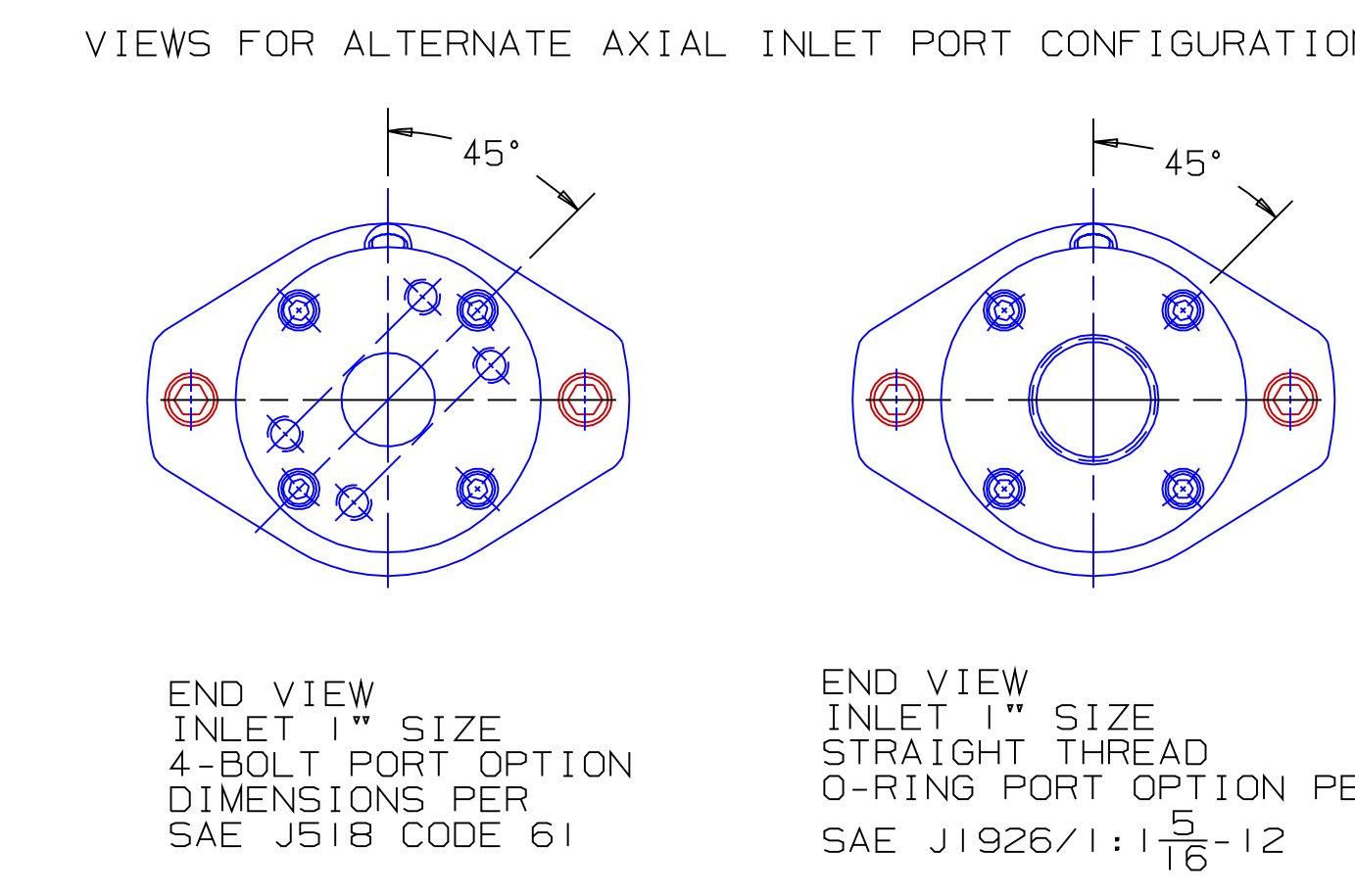
REVISION HISTORY					
CHG NO	ZONE	REV	DESCRIPTION	DATE	BY / APPROVED

ITEM	DESCRIPTION	APPROXIMATE WEIGHT		MATERIAL
		LBS	KG	
1	MOTOR *(143TC & 145TC)	68.0	30.8	
2	PUMP	18.0	8.2	
3	COUPLING, LOVEJOY L-095	1.8	0.8	
4	BRACKET	2.2	1.0	ALUMINUM
TOTAL		90.0	40.8	

* DRIVER DIMENSIONS MAY VARY WITH TYPE AND MAKE OF DRIVER



CUSTOMER NAME -----
CUSTOMER PO NUMBER -----
CUSTOMER PART NUMBER -----
UNIT BOM NUMBER -----
PUMP TYPE -----
SHAFT ROTATION -----
INLET PORT OPTION -----
OUTLET PORT OPTION -----
INLET PORT ORIENTATION -----
OUTLET PORT ORIENTATION -----
INLET ADAPTER OPTION -----
OUTLET ADAPTER OPTION -----
RELIEF VALVE SET PRESSURE, IF APPLICABLE -----
MOTOR MANUFACTURER -----
TYPE -----
FRAME -----
POWER -----
ROTATING SPEED -----
PHASE(S) -----
FREQUENCY -----
VOLTAGE -----
CONDUIT BOX POSITION -----
MOTOR INSTALLED BY -----
CERTIFIED BY -----
IMO ORDER NUMBER -----
CERTIFICATION DATE -----
CERTIFICATION REV. NO. -----



- NOTES:
- UNLESS OTHERWISE SPECIFIED, ALL DIMENSIONS ARE IN INCHES. DIMENSIONS IN [] ARE MILLIMETERS.
 - THIS IS A STANDARD PRE-ENGINEERED UNIT OUTLINE. ANY CHANGES OUTSIDE OF THE CERTIFICATION BLOCK WILL REQUIRE A NEW DRAWING ASSIGNMENT.
 - APPROXIMATE WEIGHT AND ESTIMATED C/G DO NOT INCLUDE OPTIONAL ADAPTERS OR OPTIONAL RELIEF VALVE.
 - TO MAXIMIZE SEAL LIFE, SEAL VENT MUST BE ORIENTED UPWARD (12 O'CLOCK) WHEN PUMP IS INSTALLED HORIZONTALLY. VENT ORIENTATION IS NOT CRITICAL WHEN PUMP IS INSTALLED WITH SHAFT VERTICALLY UPWARD.
 - ALTERNATE PORT ORIENTATIONS ARE PROVIDED IF SPECIFIED ON ORDER. AVAILABLE ORIENTATIONS ARE 3,6,9, AND 12 O'CLOCK.

WEB ADDRESS: WWW.IMO-PUMP.COM EMAIL: IMO.PUMP@COLFAXCORP.COM

DRAWN DMM 9-17-01

CHECKED DMM 10-3-01

APPD DMM 10-3-01

METHODS

IMo Pump
1710 Airport Road
PO Box 5020
Monroe, NC USA
28111.5020

TITLE: OUTLINE UNIT STANDARD (IRON) AA3G/095

SIZE: SDD 19822

SCALE: 1/2 WEIGHT: SEE ABOVE SHEET: 1 OF 1

IRON 3G-095 UNIT