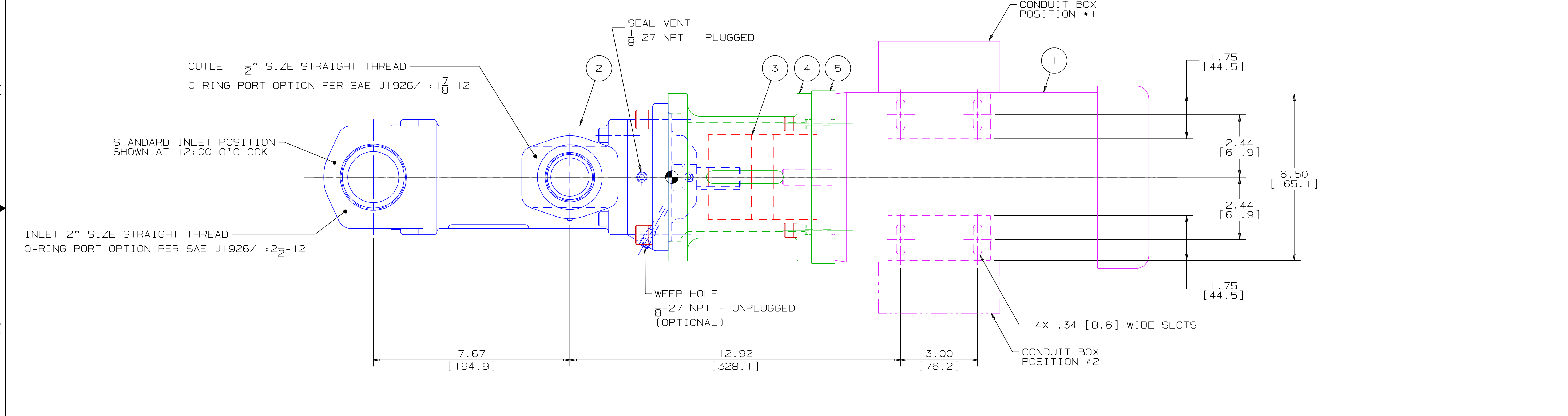
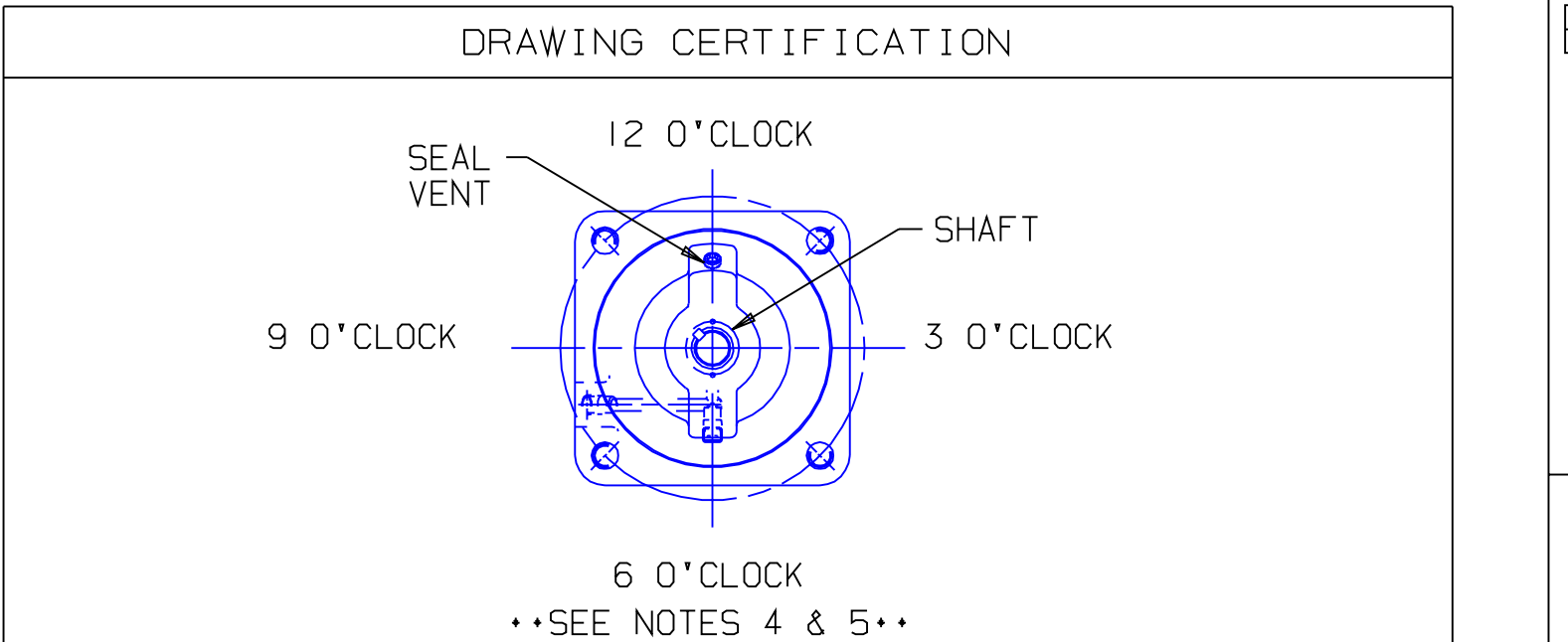
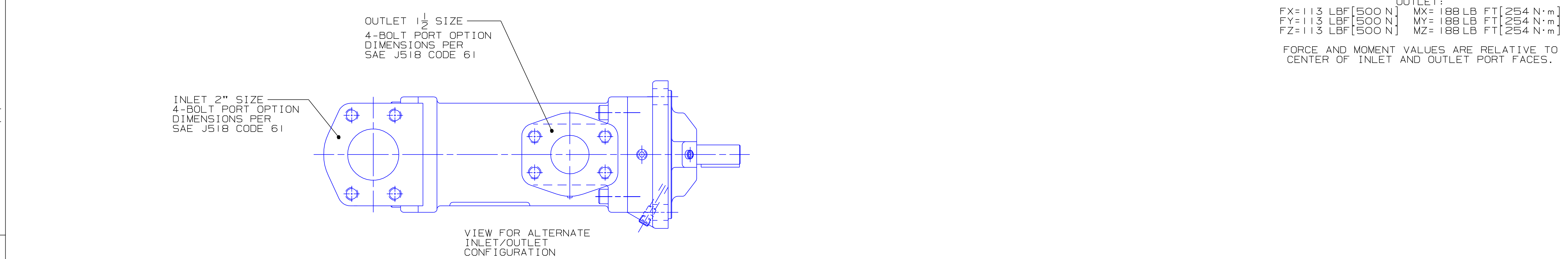


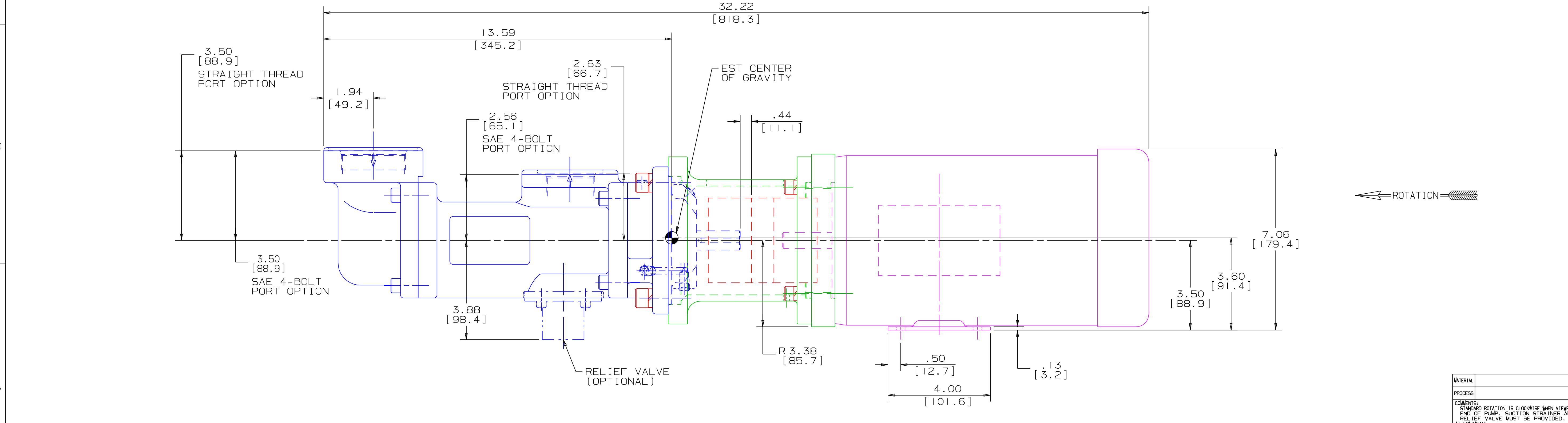
REVISION HISTORY						
CHG NO	ZONE	REV	DESCRIPTION	DATE	BY	APPROVED

ITEM	DESCRIPTION	APPROXIMATE WEIGHT		MATERIAL
		LBS	KG	
1	MOTOR* (56C)	25.0	11.3	
2	PUMP	44.0	20.0	
3	COUPLING, LOVEJOY L-110	6.0	2.7	ALUMINUM
4	BRACKET	2.2	1.0	ALUMINUM
5	BRACKET ADAPTER	1.0	0.5	ALUMINUM
TOTAL		78.2	35.5	

* DRIVER DIMENSIONS MAY VARY WITH TYPE AND MAKE OF DRIVER



CUSTOMER NAME -----
CUSTOMER PO NUMBER -----
CUSTOMER PART NUMBER -----
UNIT BOM NUMBER -----
PUMP TYPE -----
SHAFT ROTATION -----
INLET PORT OPTION -----
OUTLET PORT OPTION -----
INLET PORT ORIENTATION -----
OUTLET PORT ORIENTATION -----
INLET ADAPTER OPTION -----
OUTLET ADAPTER OPTION -----
RELIEF VALVE SET PRESSURE, IF APPLICABLE -----
MOTOR MANUFACTURER -----
TYPE -----
FRAME -----
POWER -----
ROTATING SPEED -----
PHASE(S) -----
FREQUENCY -----
VOLTAGE -----
CONDUIT BOX POSITION -----
MOTOR INSTALLED BY -----
CERTIFIED BY -----
IMO ORDER NUMBER -----
CERTIFICATION DATE -----
CERTIFICATION REV. NO. -----



- NOTES:
- UNLESS OTHERWISE SPECIFIED, ALL DIMENSIONS ARE IN INCHES. DIMENSIONS IN [] ARE MILLIMETERS.
 - THIS IS A STANDARD PRE-ENGINEERED UNIT OUTLINE. ANY CHANGES OUTSIDE OF THE CERTIFICATION BLOCK WILL REQUIRE A NEW DRAWING ASSIGNMENT.
 - APPROXIMATE WEIGHT AND ESTIMATED C/G DO NOT INCLUDE OPTIONAL ADAPTERS OR OPTIONAL RELIEF VALVE.
 - TO MAXIMIZE SEAL LIFE, SEAL VENT MUST BE ORIENTED UPWARD (12 O'CLOCK) WHEN PUMP IS INSTALLED HORIZONTALLY. VENT ORIENTATION IS NOT CRITICAL WHEN PUMP IS INSTALLED WITH SHAFT VERTICALLY UPWARD.
 - ALTERNATE PORT ORIENTATIONS ARE PROVIDED IF SPECIFIED ON ORDER. AVAILABLE ORIENTATIONS ARE 3,6,9, AND 12 O'CLOCK.

WEB ADDRESS: WWW.IMO-PUMP.COM		EMAIL: IMO.PUMP@COLFAXCORP.COM	
DRAWN	DMM B-27-01	<p>Imo Pump 1710 Airport Road PO Box 5020 Monroe, NC USA 28111.5020</p>	<p>TITLE OUTLINE UNIT STANDARD (IRON) AA3G/-----143/162</p>
CHECKED	DMM 10-1-01		
APPD	DMM 10-1-01		
PROCESS	METHODS	<p>NO. NEXT REVISION</p> <p>FIRST ORDER</p> <p>SCALE 1/2</p>	<p>WEIGHT SEE ABOVE</p> <p>SHEET 1 OF 1</p>

IRON 3G-143/162 UNIT