

INLET:
 FX= 150 LBF 667 N MX= 250 LB FT 339 N.m
 FY= 150 LBF 667 N MY= 250 LB FT 339 N.m
 FZ= 150 LBF 667 N MZ= 250 LB FT 339 N.m

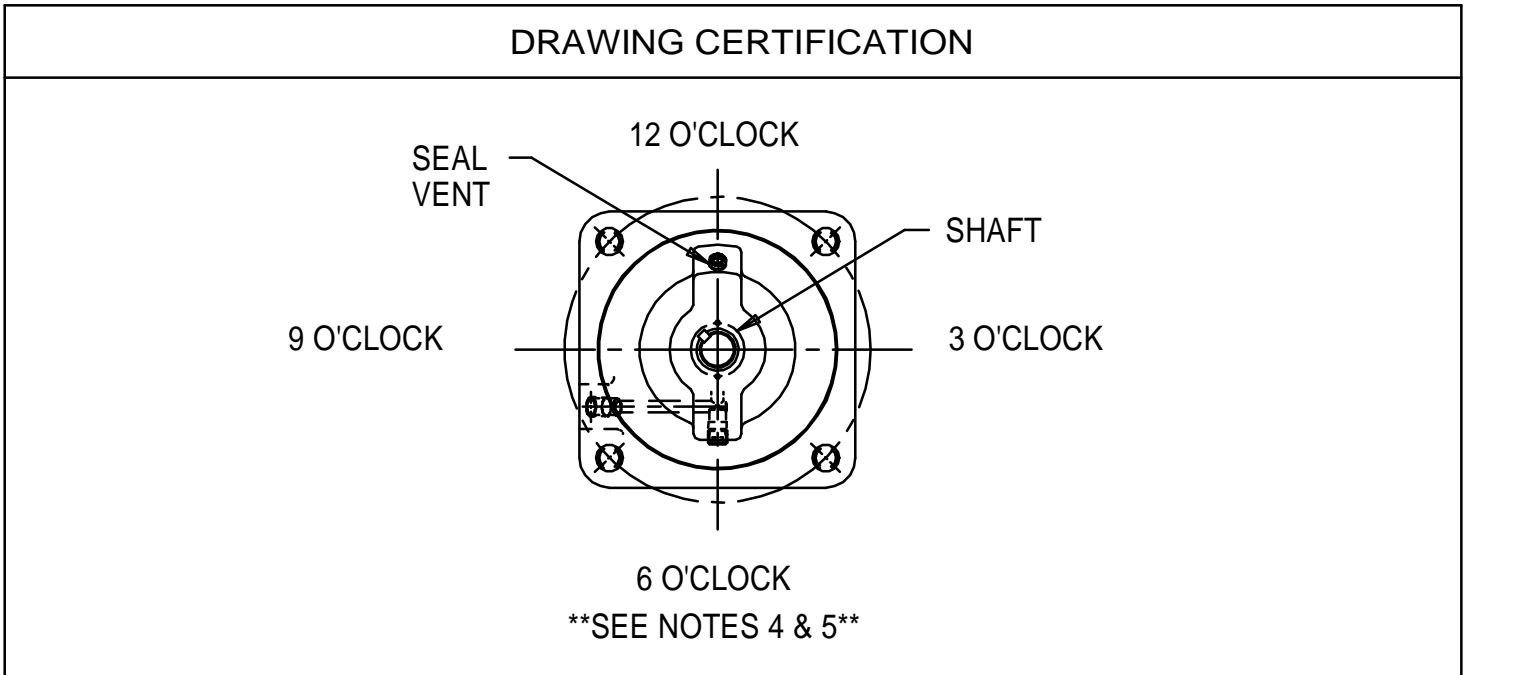
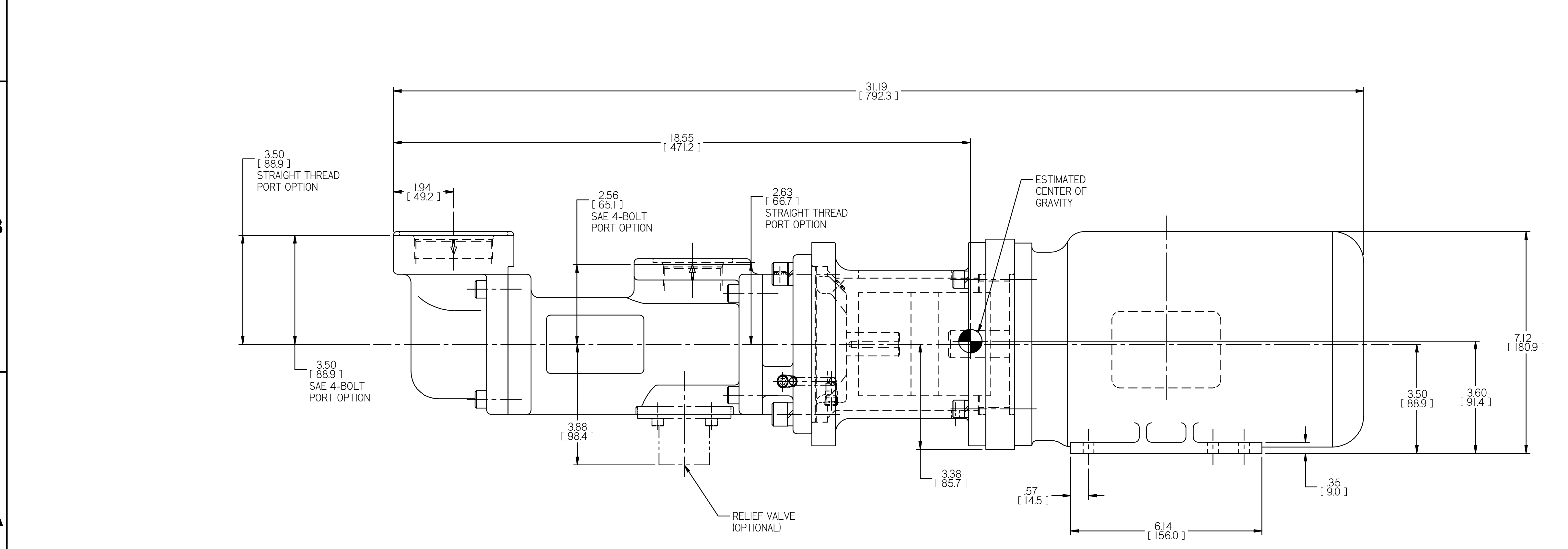
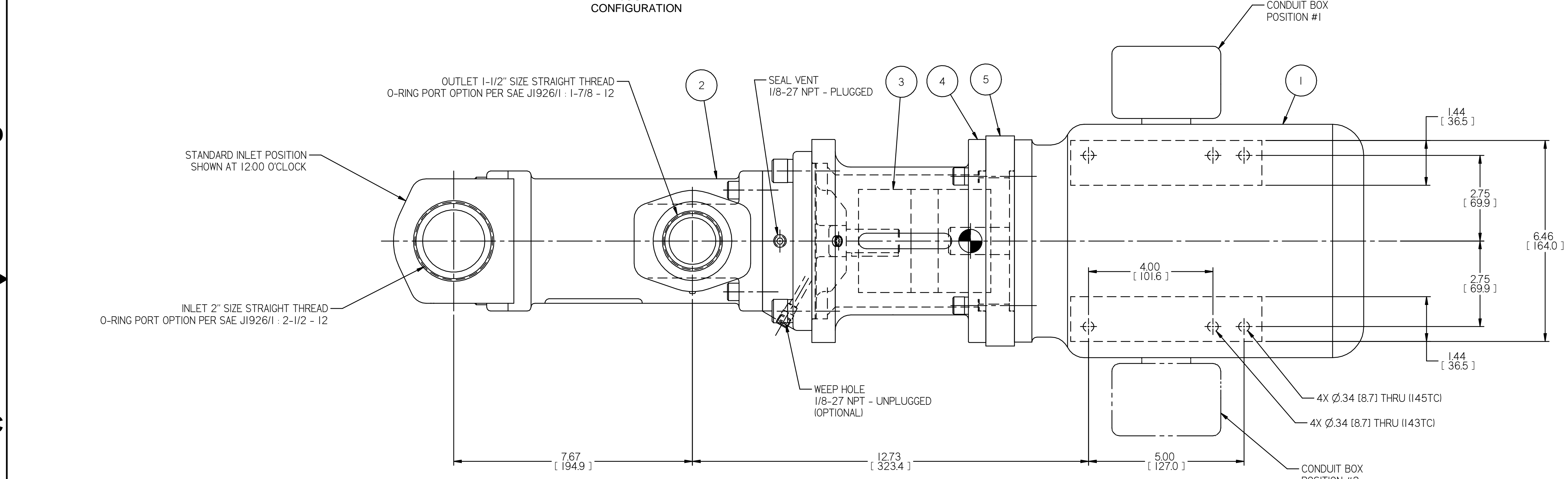
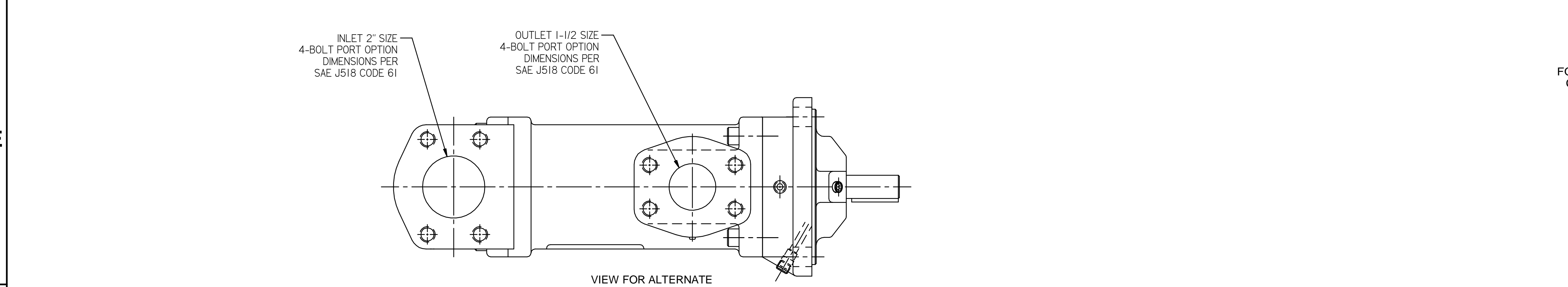
OUTLET:
 FX= 113 LBF 500 N MX= 188 LB FT 254 N.m
 FY= 113 LBF 500 N MY= 188 LB FT 254 N.m
 FZ= 113 LBF 500 N MZ= 188 LB FT 254 N.m

FORCE AND MOMENT VALUES ARE RELATIVE TO CENTER OF INLET AND OUTLET PORT FACES.

REVISION HISTORY					
CHG NO	ZONE	REV	DESCRIPTION	DATE	BY / APPROVED
15-0225	ALL	03	REVISED MOTOR GEOMETRY	04-10-15	ERH / CHH

ITEM	DESCRIPTION	APPROXIMATE WEIGHT		MATERIAL
		LBS	KILOGRAMS	
1	MOTOR * (143TC & 145TC)	68.0	30.8	
2	PUMP	44.0	20.0	
3	COUPLING, LOVEJOY L-110	6.0	2.7	
4	BRACKET	2.2	1.0	ALUMINUM
5	BRACKET ADAPTER	1.0	0.5	ALUMINUM
TOTAL		121.2	55.0	

* DRIVER DIMENSIONS MAY VARY WITH TYPE AND MAKE OF DRIVER



CUSTOMER NAME -----

CUSTOMER PO NUMBER -----

CUSTOMER PART NUMBER -----

UNIT BOM NUMBER -----

PUMP

PUMP TYPE -----

SHAFT ROTATION -----

INLET PORT OPTION -----

OUTLET PORT OPTION -----

INLET PORT ORIENTATION -----

OUTLET PORT ORIENTATION -----

INLET ADAPTER OPTION -----

OUTLET ADAPTER OPTION -----

RELIEF VALVE SET PRESSURE, IF APPLICABLE -----

MOTOR

MOTOR MANUFACTURER -----

TYPE -----

FRAME -----

POWER -----

ROTATING SPEED -----

PHASE(S) -----

FREQUENCY -----

VOLTAGE -----

CONDUIT BOX POSITION -----

MOTOR INSTALLED BY -----

CERTIFIED BY -----

IMO ORDER NUMBER -----

CERTIFICATION DATE -----

CERTIFICATION REV. NO. -----

NOTES:

- NOTES**
- UNLESS OTHERWISE SPECIFIED, ALL DIMENSIONS ARE IN INCHES. DIMENSIONS IN () ARE MILLIMETERS.
 - THIS IS A STANDARD PRE-ENGINEERED UNIT OUTLINE. ANY CHANGES OUTSIDE OF THE CERTIFICATION BLOCK WILL REQUIRE A NEW DRAWING ASSIGNMENT.
 - APPROXIMATE WEIGHT AND ESTIMATED C/G DO NOT INCLUDE OPTIONAL ADAPTERS OR OPTIONAL RELIEF VALVE.
 - TO MAXIMIZE SEAL LIFE, SEAL VENT MUST BE ORIENTED UPWARD (12 O'CLOCK) WHEN PUMP IS INSTALLED HORIZONTALLY. VENT ORIENTATION IS NOT CRITICAL WHEN PUMP IS INSTALLED WITH SHAFT VERTICALLY UPWARD.
 - ALTERNATE PORT ORIENTATIONS ARE PROVIDED IF SPECIFIED ON ORDER. AVAILABLE ORIENTATIONS ARE 3,6,9, AND 12 O'CLOCK.



UNLESS OTHERWISE SPECIFIED
 ASME Y14.5M-1994

EDMOUNTS
 SUCTION STRAINER AND DISCHARGE RELIEF VALVE MUST BE PROVIDED
 ALIGNMENT
 UNITS ARE ACQUAINTED ALIGNED AT THE FACTORY. ALIGNMENT SHOULD
 BE CHECKED BEFORE STARTING TO ENSURE THAT IT IS STILL WITHIN .005
 (0.127) MM.
 RECHECKING
 FLUSH SUCTION PIPING BEFORE CONNECTING PUMP. PRIME AND VENT
 PUMP. READ INSTRUCTION MANUAL FOR DETAILS BEFORE STARTING.

DRAWN	BMR	10-5-00
CHECKED	CDG	10-6-00
APPROVED	CDG	10-6-00
PROCESS	METHODS	

COLFAX
 Fluid Handling

Imo Pump
 1710 Airport Road
 PO Box 5020
 Monroe, NC 28111-5020
 USA

TITLE: **OUTLINE UNIT STANDARD (IRON)**
AA3G/----- 143/162 --

SIZE: **F** CHAGE CODE: **59180** DWSG NO: **SDD19808**

SCALE: **1/2** WEIGHT: **SEE ABOVE** SHEET: **1** OF: **1**