

INLET:
 FX=37.5 LBF [167 N] MY=62.5 LB FT [84.7 N·m]
 FY=37.5 LBF [167 N] MZ=62.5 LB FT [84.7 N·m]
 FZ=37.5 LBF [167 N]

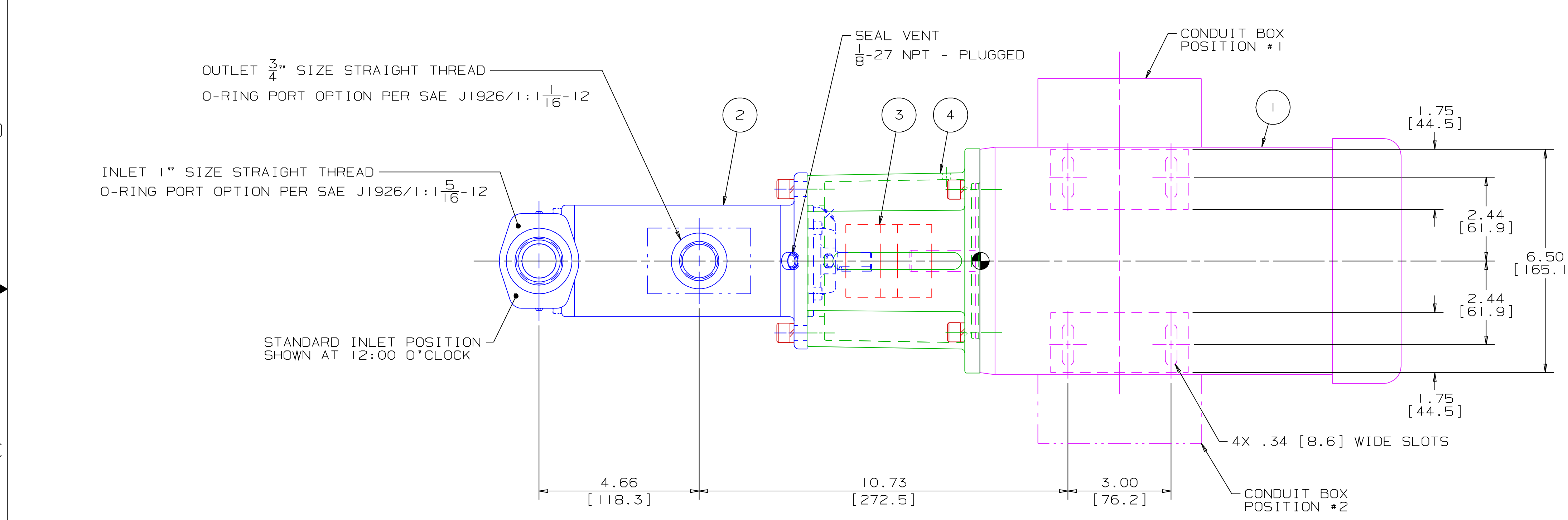
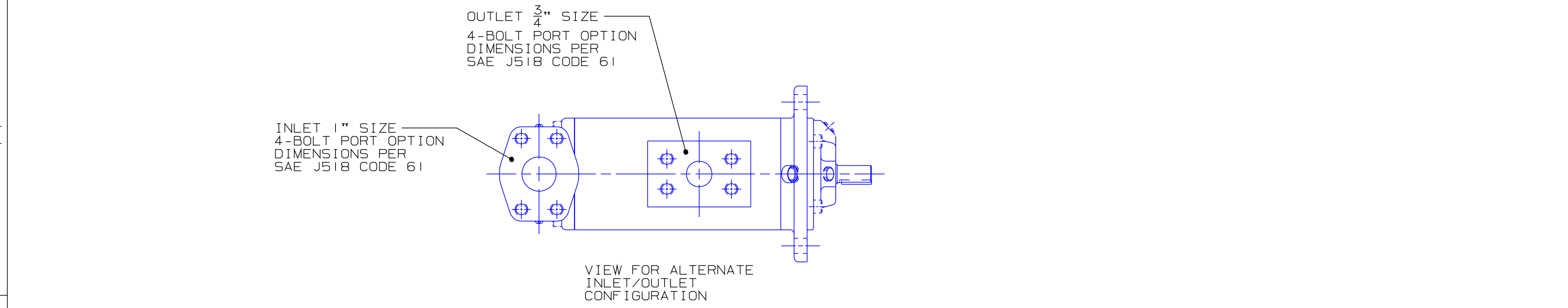
OUTLET:
 MX=46.9 LB FT [63.6 N·m]
 MY=46.9 LB FT [63.6 N·m]
 MZ=46.9 LB FT [63.6 N·m]

FORCE AND MOMENT VALUES ARE RELATIVE TO CENTER OF INLET AND OUTLET PORT FACES.

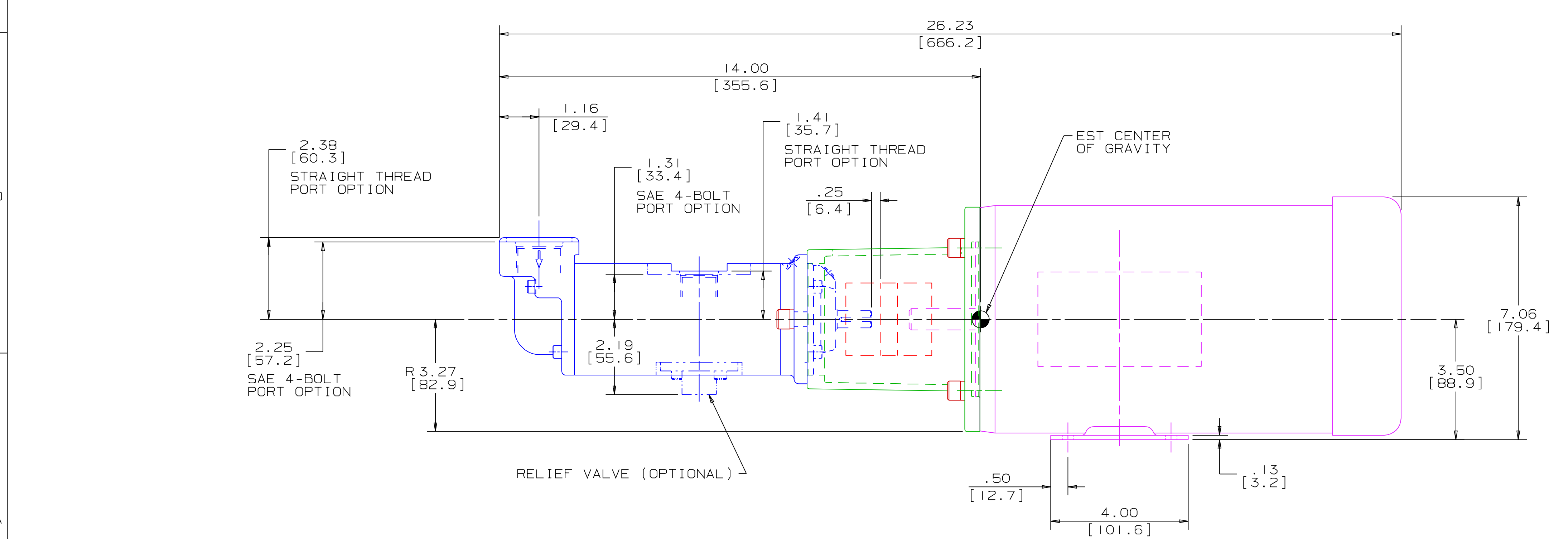
REVISION HISTORY					
CHG NO	ZONE	REV	DESCRIPTION	DATE	BY / APPROVED
01-0007	B2	1	REMOVED GENERIC NOTES, ADDED CERTIFICATION NOTES	1-4-01	DAV / BMR
01-0425	ALL	2	UPDATED NOTES, CERTIFICATION BLOCK, 10-1-01	10-1-01	DMM / DMM
			ADAPTERS AND INLET/OUTLET CALLOUTS		

ITEM	DESCRIPTION	APPROXIMATE WEIGHT		MATERIAL
		LB	KILOGRAMS	
1	MOTOR * (56C)	25.0	11.3	
2	PUMP	18.0	8.2	
3	COUPLING, LOVEJOY L-095	1.8	0.8	
4	BRACKET	2.2	1.0	ALUMINUM
	TOTAL	47.0	21.3	

* DRIVER DIMENSIONS MAY VARY WITH TYPE AND MAKE OF DRIVER



DRAWING CERTIFICATION	
<p>12 O'CLOCK 9 O'CLOCK 3 O'CLOCK 6 O'CLOCK ••SEE NOTES 4 & 5••</p>	
CUSTOMER NAME	-----
CUSTOMER PO NUMBER	-----
CUSTOMER PART NUMBER	-----
UNIT BOM NUMBER	-----
PUMP	PUMP TYPE ----- SHAFT ROTATION ----- INLET PORT OPTION ----- OUTLET PORT OPTION ----- INLET PORT ORIENTATION ----- OUTLET PORT ORIENTATION ----- INLET ADAPTER OPTION ----- OUTLET ADAPTER OPTION ----- RELIEF VALVE SET PRESSURE, IF APPLICABLE -----
MOTOR	MOTOR MANUFACTURER ----- TYPE ----- FRAME ----- POWER ----- ROTATING SPEED ----- PHASE(S) ----- FREQUENCY ----- VOLTAGE ----- CONDUIT BOX POSITION ----- MOTOR INSTALLED BY -----
CERTIFIED BY ----- IMO ORDER NUMBER ----- CERTIFICATION DATE ----- CERTIFICATION REV. NO. -----	
NOTES:	



- NOTES:
- UNLESS OTHERWISE SPECIFIED, ALL DIMENSIONS ARE IN INCHES. DIMENSIONS IN [] ARE MILLIMETERS.
 - THIS IS A STANDARD PRE-ENGINEERED UNIT OUTLINE. ANY CHANGES OUTSIDE OF THE CERTIFICATION BLOCK WILL REQUIRE A NEW DRAWING ASSIGNMENT.
 - APPROXIMATE WEIGHT AND ESTIMATED C/G DO NOT INCLUDE OPTIONAL ADAPTERS OR OPTIONAL RELIEF VALVE.
 - TO MAXIMIZE SEAL LIFE, SEAL VENT MUST BE ORIENTED UPWARD (12 O'CLOCK) WHEN PUMP IS INSTALLED HORIZONTALLY. VENT ORIENTATION IS NOT CRITICAL WHEN PUMP IS INSTALLED WITH SHAFT VERTICALLY UPWARD.
 - ALTERNATE PORT ORIENTATIONS ARE PROVIDED IF SPECIFIED ON ORDER. AVAILABLE ORIENTATIONS ARE 3, 6, 9, AND 12 O'CLOCK.

WEB ADDRESS: WWW.IMO-PUMP.COM		EMAIL: IMO.PUMP@COLFAXCORP.COM	
DRAWN	BMR 11-10-99	SIZE	A3
CHECKED	WLW 4-10-00	CAGE CODE	59180
APPD	WLW 4-10-00	DWG NO	SDD 19797
PROCESS		SCALE	1/2
COMMENTS: STANDARD ROTATION IS CLOCKWISE WHEN VIEWED FROM COUPLING END OF PUMP. SUCTION STRAINER AND DISCHARGE RELIEF VALVE MUST BE PROVIDED. UNITS ARE ACCURATELY ALIGNED AT THE FACTORY. ALIGNMENT SHOULD BE CHECKED BEFORE STARTING TO ENSURE THAT IT IS STILL WITHIN .005 [0.13] FT/M. FLUSH SUCTION PIPING BEFORE CONNECTING PUMP. PRIME AND VENT PUMP. DO NOT START PUMP WITH VALVES CLOSED. READ INSTRUCTION MANUAL FOR DETAILS BEFORE STARTING.		TITLE OUTLINE UNIT STANDARD (IRON) A33G	
DATE	5013663	REV	1
USED ON	3515/030-1	WEIGHT	SEE ABOVE
SHEET 1 OF 1			

IRON 3G-095 UNIT