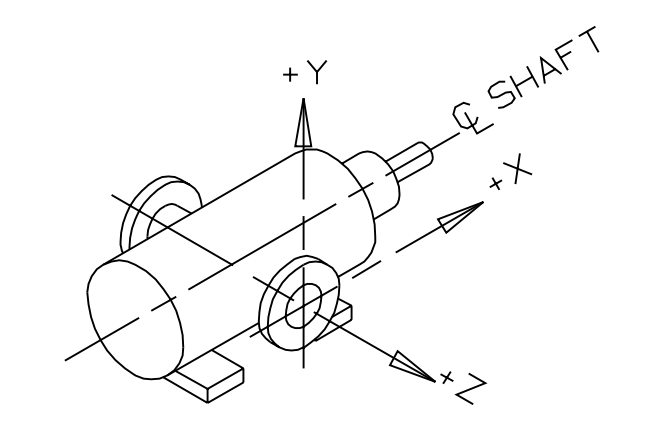


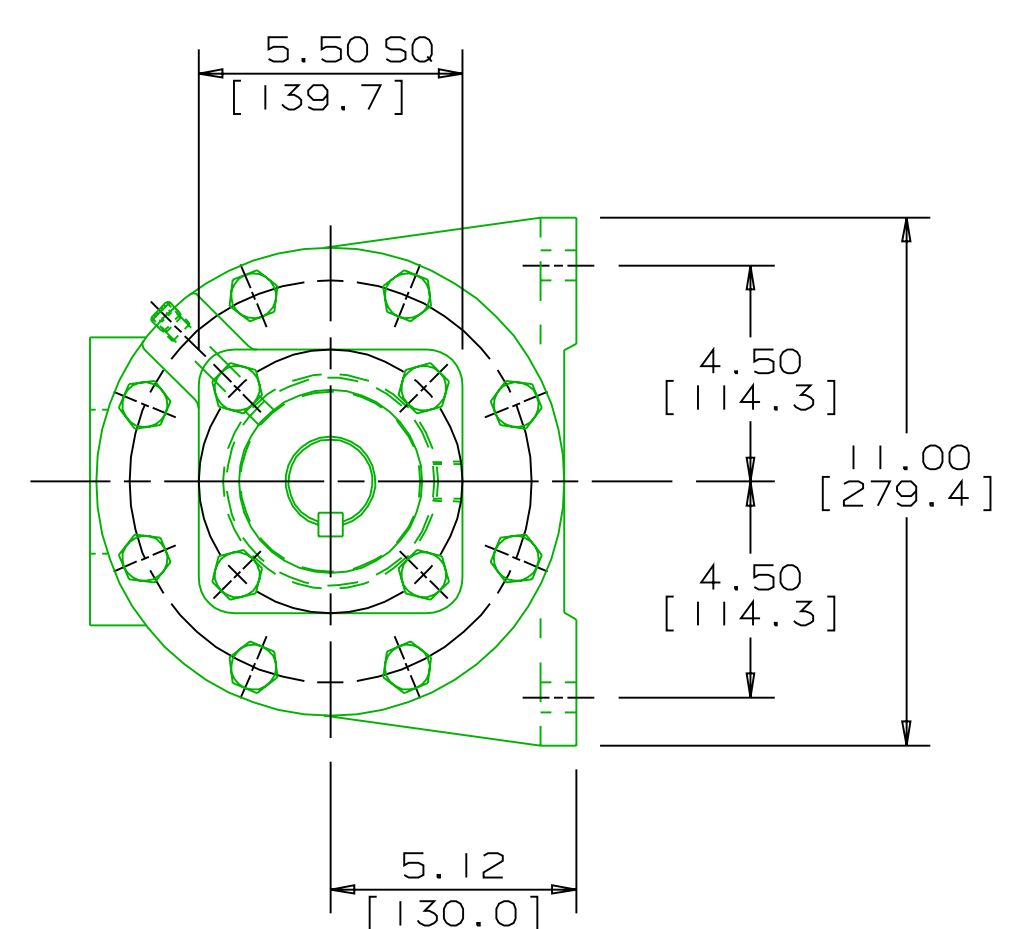
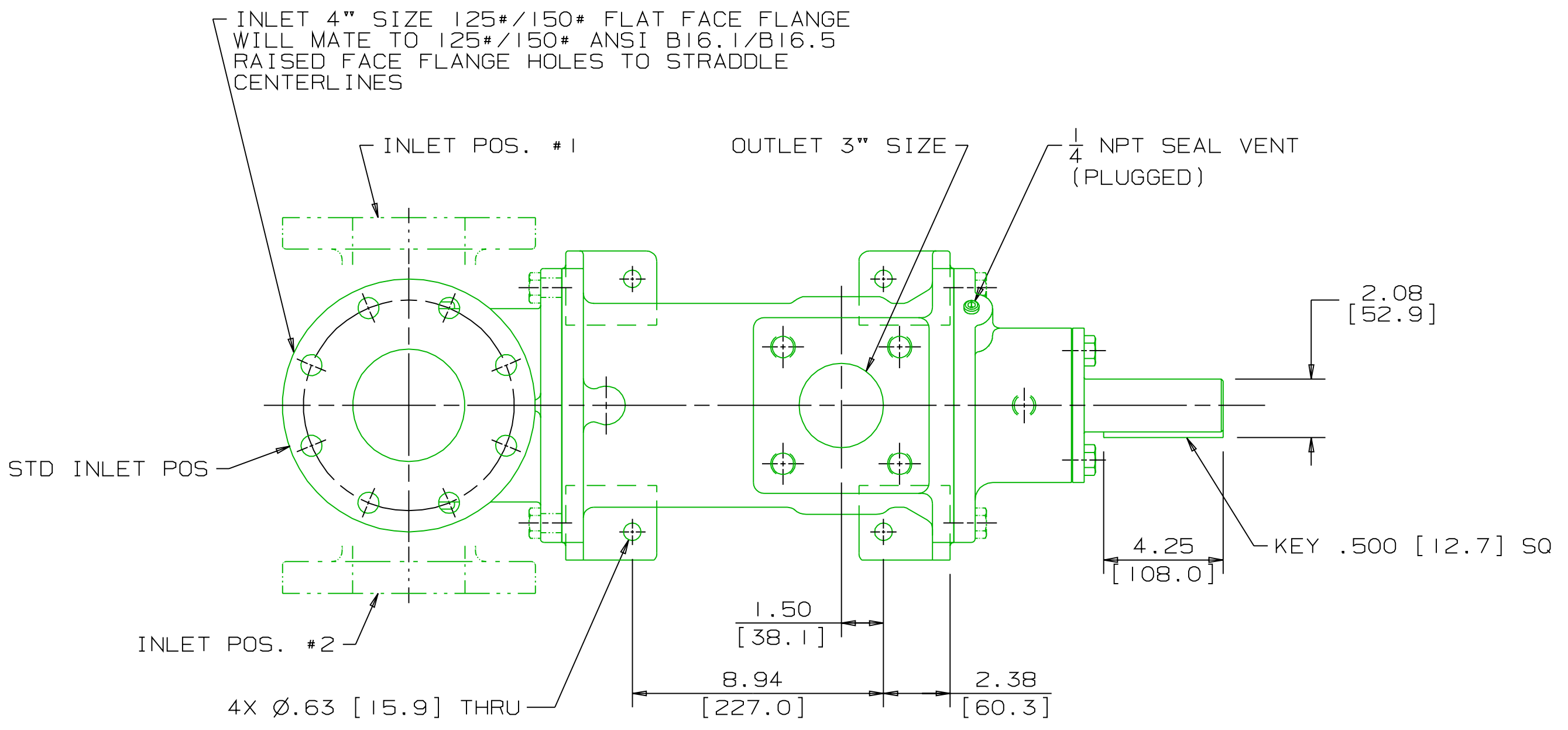
REVISION HISTORY						
CHG NO	ZONE	REV	DESCRIPTION	DATE	BY	APPROVED
99-00344	B6,C3,C5	1	CHG'D FRT COVER CONFIG, DEL'D ANTI-ROTATION BOLT	04-09-99	JTT	BMR
00-00452	ALL	2	REW'D RIBS ON PUMP CASE, REPL'D "GENERIC" W/ "STANDARD"	10-18-00	KV	ERH
00-0579	ALL	3	UPDATED TO CURRENT STANDARDS	11-21-00	DMM	DMM



INLET:
 FX=300 LBF [1330 N] MY=500 LB FT [678 N·m]
 FY=300 LBF [1330 N] MZ=500 LB FT [678 N·m]
 FZ=300 LBF [1330 N]

OUTLET:
 MX=375 LB FT [508 N·m]
 MY=375 LB FT [508 N·m]
 MZ=375 LB FT [508 N·m]

FORCE AND MOMENT VALUES ARE RELATIVE TO CENTER OF INLET AND OUTLET PORT FACES.



- NOTES:
- UNLESS OTHERWISE SPECIFIED, ALL DIMENSIONS ARE IN INCHES. DIMENSIONS IN [] ARE MILLIMETERS.
 - TO MAXIMIZE SEAL LIFE, SEAL VENT MUST BE ORIENTED UPWARD (12 O'CLOCK) WHEN PUMP IS INSTALLED HORIZONTALLY. THIS IS NORMAL VENT ORIENTATION WHEN PUMP FEET ARE ORIENTED DOWNWARD. SEAL VENT ORIENTATION IS NOT CRITICAL WHEN PUMP IS INSTALLED WITH SHAFT VERTICALLY UPWARD.
 - PORT, FOOT, AND SEAL VENT ORIENTATIONS ARE SUPPLIED AS SHOWN ON DRAWING UNLESS OTHERWISE SPECIFIED.
 - ALTERNATE INLET PORT POSITIONS ARE PROVIDED IF SPECIFIED ON ORDER. AVAILABLE POSITIONS ARE: STANDARD, POSITION #1, POSITION #2 OR POSITION #3. ALL INLET PORT POSITIONS ARE RELATIVE TO OUTLET PORT.
 - ESTIMATED WEIGHT (WITHOUT PORT ADAPTERS) 246 LBS [111.6 kg].

DRAWING CERTIFICATION	
CUSTOMER NAME	-----
CUSTOMER PO NUMBER	-----
CUSTOMER PART NUMBER	-----
BOM NUMBER	-----
PUMP TYPE	-----
SHAFT ROTATION	-----
INLET PORT POSITION	-----
OUTLET PORT ADAPTER OPTION	-----
OTHER INFORMATION	
CERTIFIED BY	-----
CERTIFIED DATE	-----
IMO ORDER NUMBER	-----
DATA REVISION NUMBER	-----

WEB ADDRESS: WWW. IMO-PUMP.COM EMAIL: IMO.PUMP@COLFAXCORP.COM

DRAWN JTT 09-16-98
 CHECKED MJC 09-16-98
 APPD MJC 09-16-98

Imo Pump
 1710 Airport Road
 PO Box 5020
 Monroe, NC USA
 28111.5020

TITLE: **OUTLINE STANDARD (STEEL)**
 G3D-S-275

THIRD ANGLE PROJECTION FIRST ORDER SIZE D CAGE CODE 59180 DWG NO SDD19541

SCALE 1/4 WEIGHT SEE NOTE 5 SHEET 1 OF 1

FOOT MOUNT, RIGHT ANGLE INLET
 STEEL 3D-275