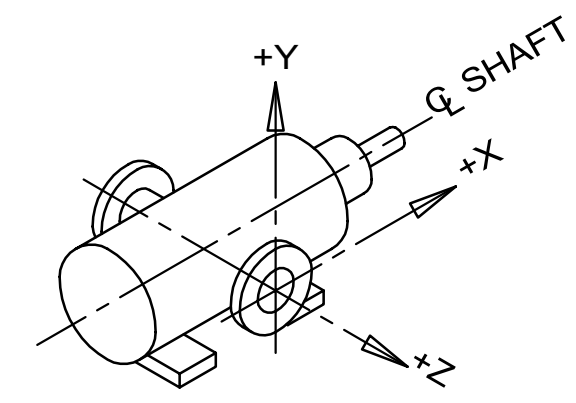
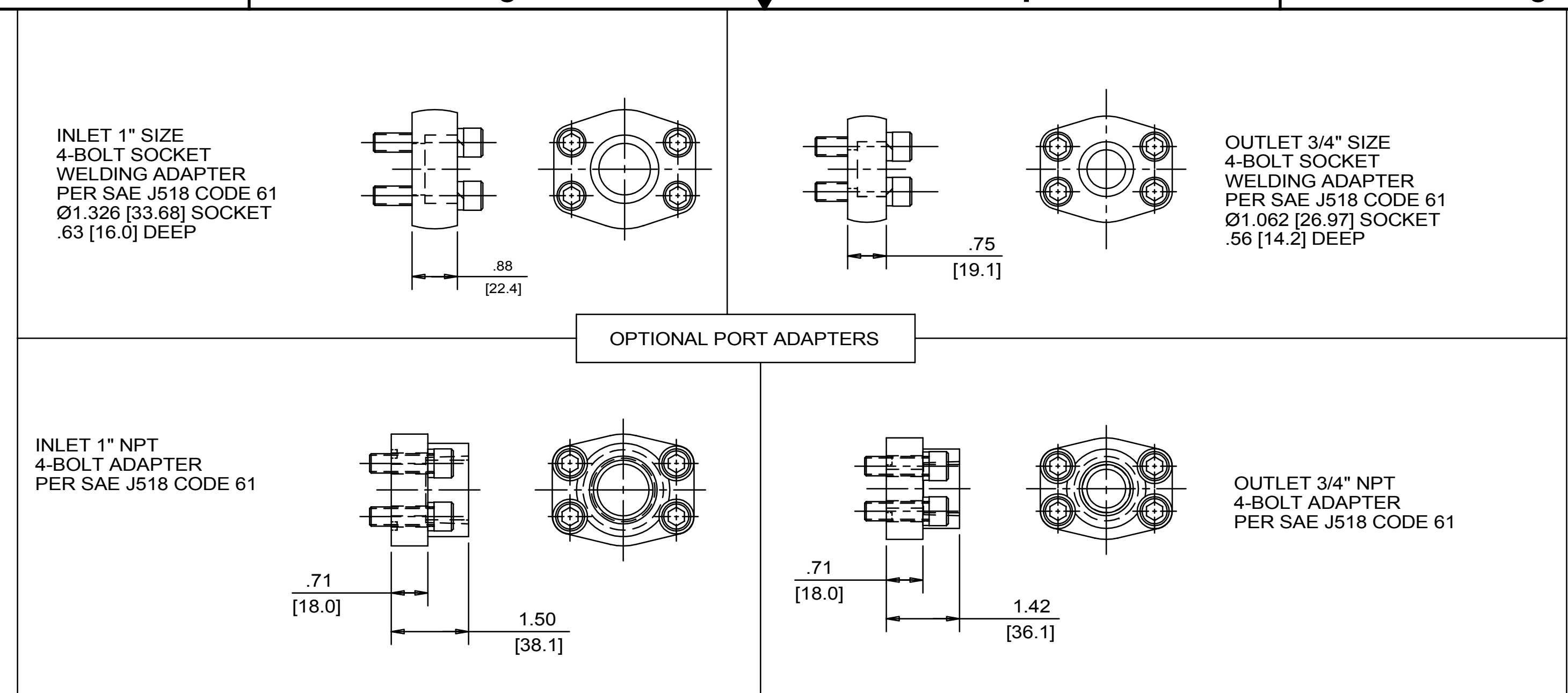


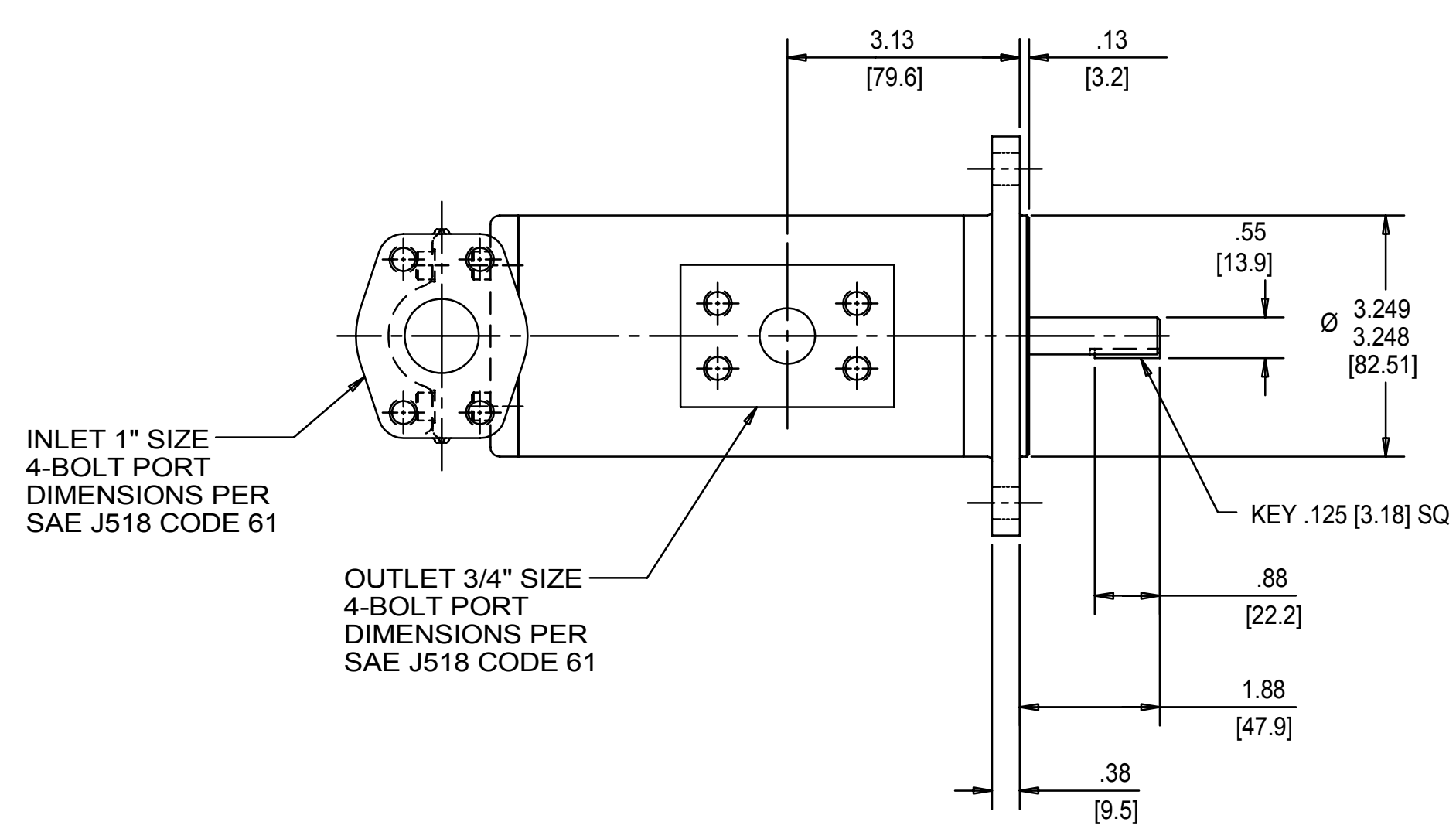
REVISION HISTORY						
CHG NO	ZONE	REV	DESCRIPTION	DATE	BY	APPROVED
11-0187	A1	6	CHANGED TITLE, WAS AA3G	5-17-11	ERH	ERH



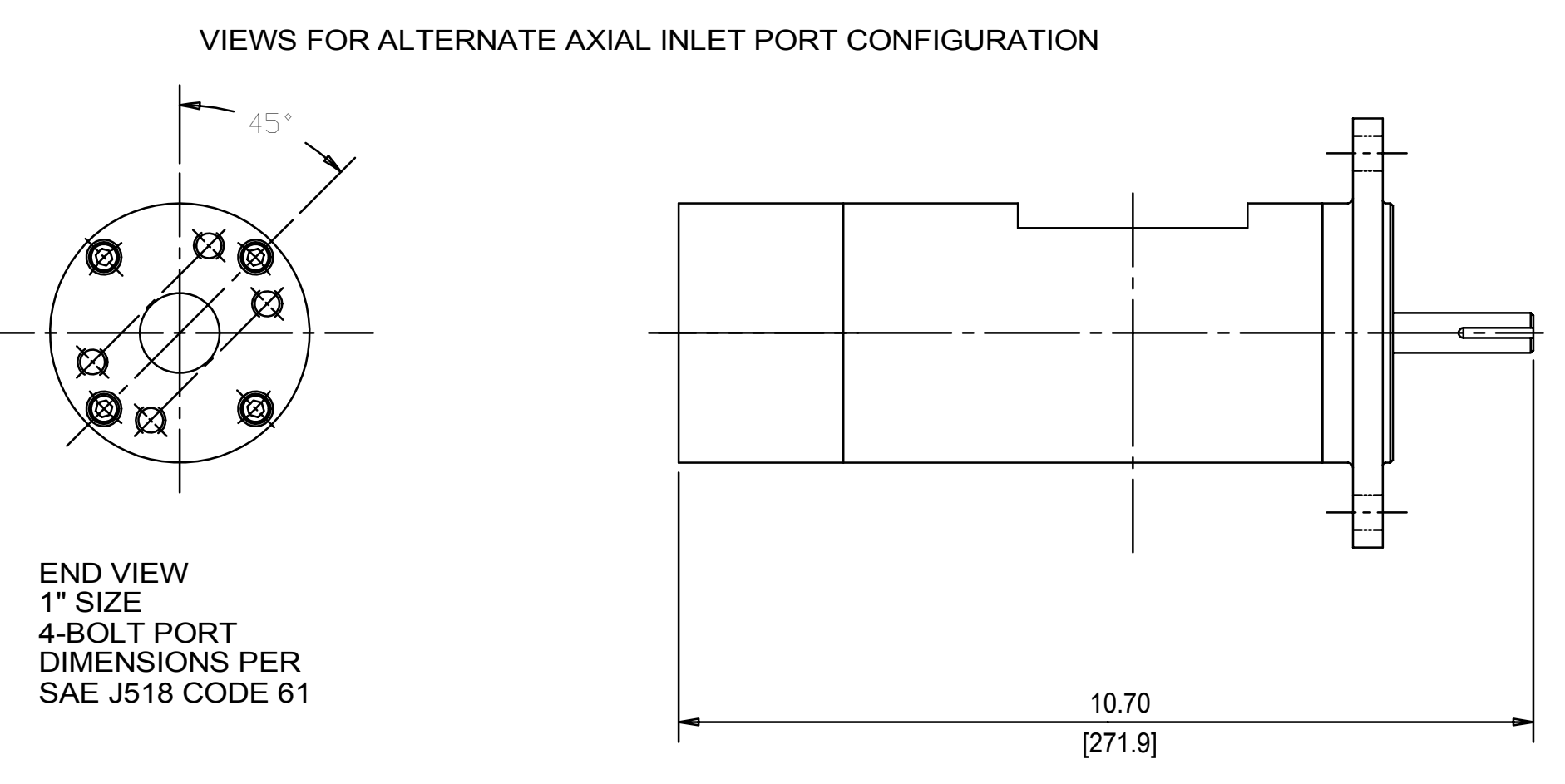
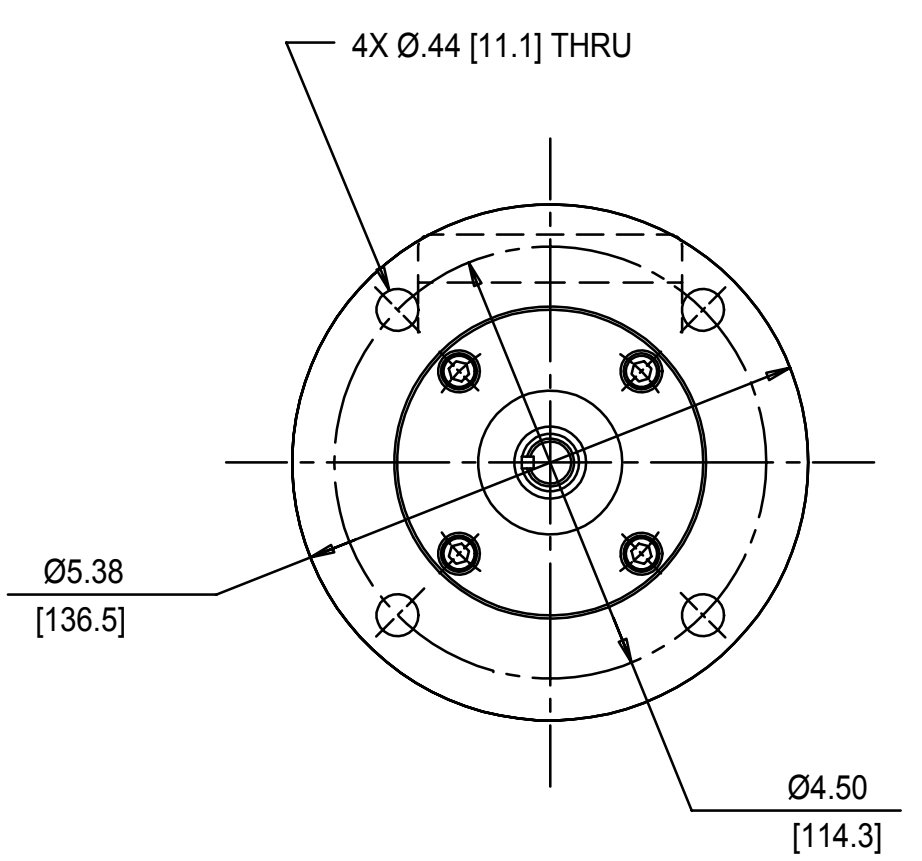
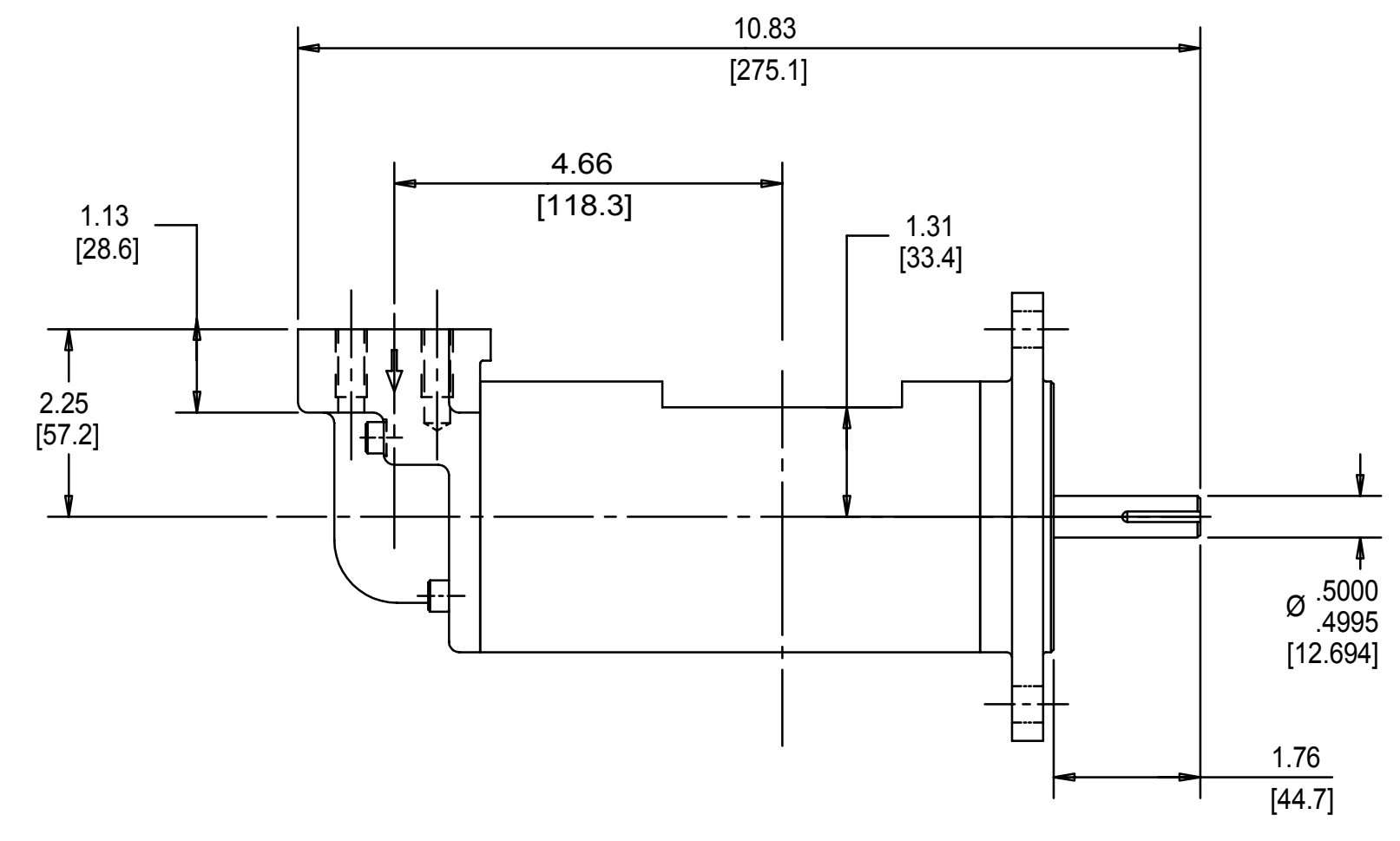
INLET:
FX= 37.5 LBF [169 N] MX= 62.5 LB FT [84.7 N.m]
FY= 37.5 LBF [169 N] MY= 62.5 LB FT [84.7 N.m]
FZ= 37.5 LBF [169 N] MZ= 62.5 LB FT [84.7 N.m]

OUTLET:
FX= 28.1 LBF [125 N] MX= 46.9 LB FT [63.6 N.m]
FY= 28.1 LBF [125 N] MY= 46.9 LB FT [63.6 N.m]
FZ= 28.1 LBF [125 N] MZ= 46.9 LB FT [63.6 N.m]

FORCE AND MOMENT VALUES ARE RELATIVE TO CENTER OF INLET AND OUTLET PORT FACES.



← ROTATION →



- NOTES:
- PORT ORIENTATIONS SUPPLIED AS SHOWN UNLESS OTHERWISE SPECIFIED.
 - ALTERNATE RADIAL INLET PORT ORIENTATIONS PROVIDED IF SPECIFIED ON ORDER. AVAILABLE ALTERNATE ORIENTATIONS ARE 3, 6, 9, AND 12 O'CLOCK RELATIVE TO OUTLET PORT.
 - BOLT PATTERN FOR SAE 4-BOLT AXIAL INLET IS ALWAYS ORIENTED AS SHOWN WITH RESPECT TO OUTLET PORT.
 - APPROXIMATE PUMP WEIGHT [WITHOUT ADAPTERS]: 18.1 LBS. [8.25 kgs]
 - UNLESS OTHERWISE SPECIFIED, ALL DIMENSIONS ARE IN INCHES. DIMENSIONS IN () ARE MILLIMETERS.

DRAWING CERTIFICATION

CUSTOMER NAME -----
CUSTOMER PO NUMBER -----
CUSTOMER PART NUMBER -----
BOM NUMBER -----
PUMP TYPE -----
SHAFT ROTATION -----
INLET PORT ORIENTATION -----
INLET PORT OPTION -----
INLET ADAPTER OPTION -----
OUTLET ADAPTER OPTION -----

OTHER INFORMATION _____

CERTIFIED BY -----
CERTIFIED DATE -----
IMO ORDER NUMBER -----
DATA REVISION NUMBER -----

DRAWN	NRS	6-14-99		Imo Pump 1710 Airport Road PO Box 5020 Monroe, NC USA 28111-5020
CHECKED	NRS	6-14-99		
APPROVED	NRS	6-14-99		
TITLE	OUTLINE STANDARD (STEEL)		SCALE	1/2
PROCESS	UNLESS OTHERWISE SPECIFIED ASME Y14.5M-1994		WEIGHT	SEE NOTE 4
COMMENTS	<small> ELEMENTS: SUCTION STRAINER AND DISCHARGE RELIEF VALVE MUST BE PROVIDED ALIGNMENT: UNITS ARE ACCURATELY ALIGNED AT THE FACTORY. ALIGNMENT SHOULD BE CHECKED BEFORE STARTING TO ENSURE THAT IT IS STILL WITHIN COS ID (3) FM. RECEIVING: FLUSH SUCTION PUMP BEFORE CONNECTING PUMP. PRIME AND VENT PUMP. READ INSTRUCTION MANUAL FOR DETAILS BEFORE STARTING. </small>		SHEET	1 OF 1
DATE	5-17-11	BY	ERH	APPROVED
BY	ERH	APPROVED	ERH	