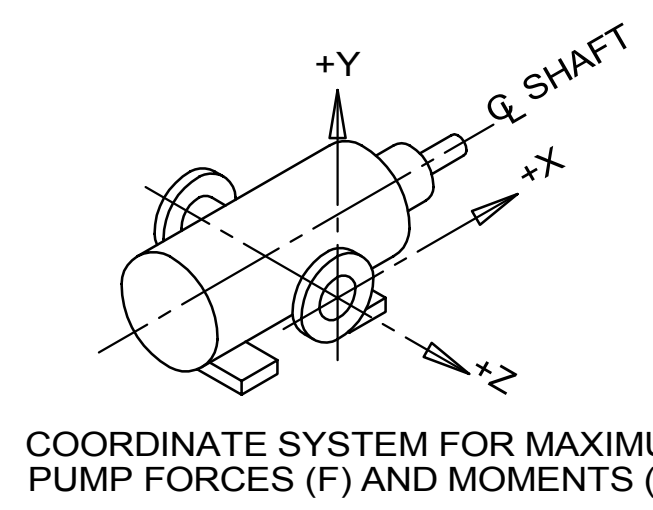
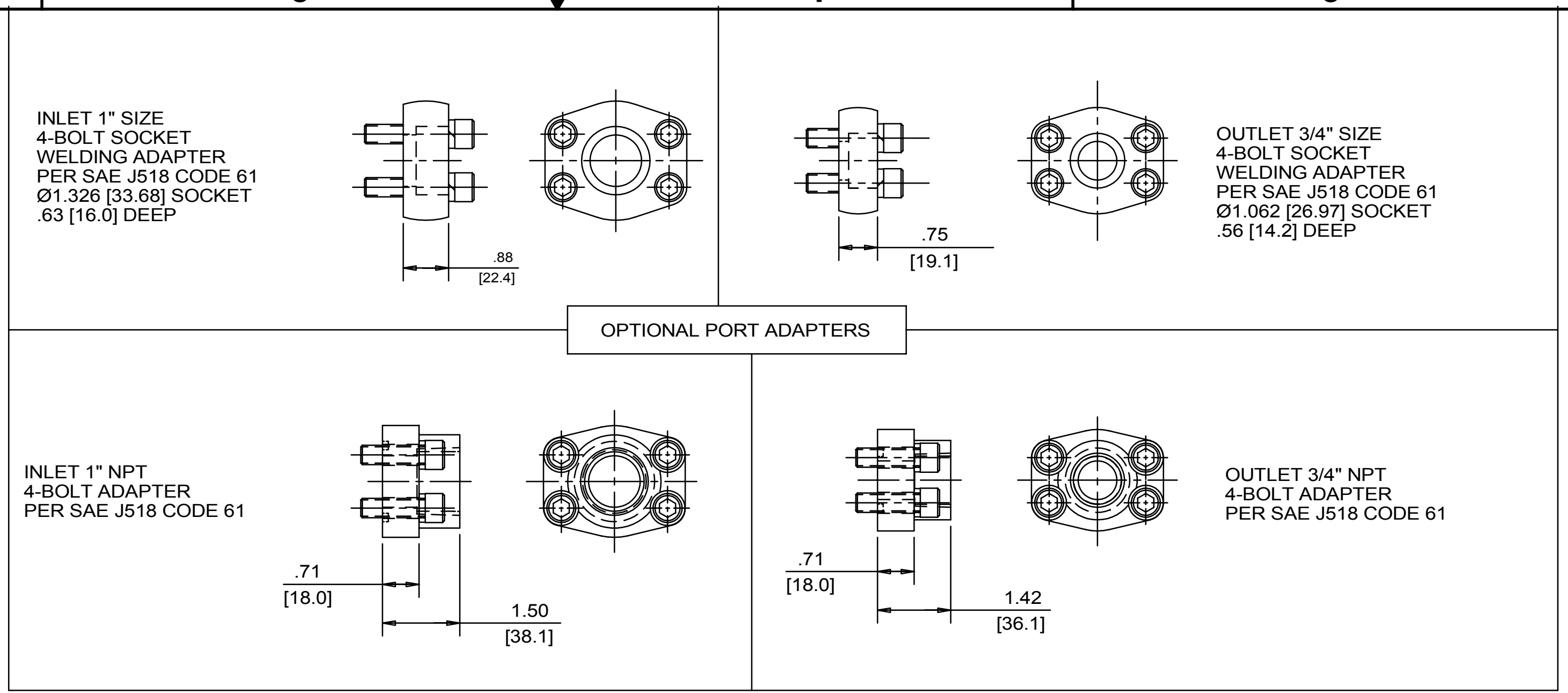


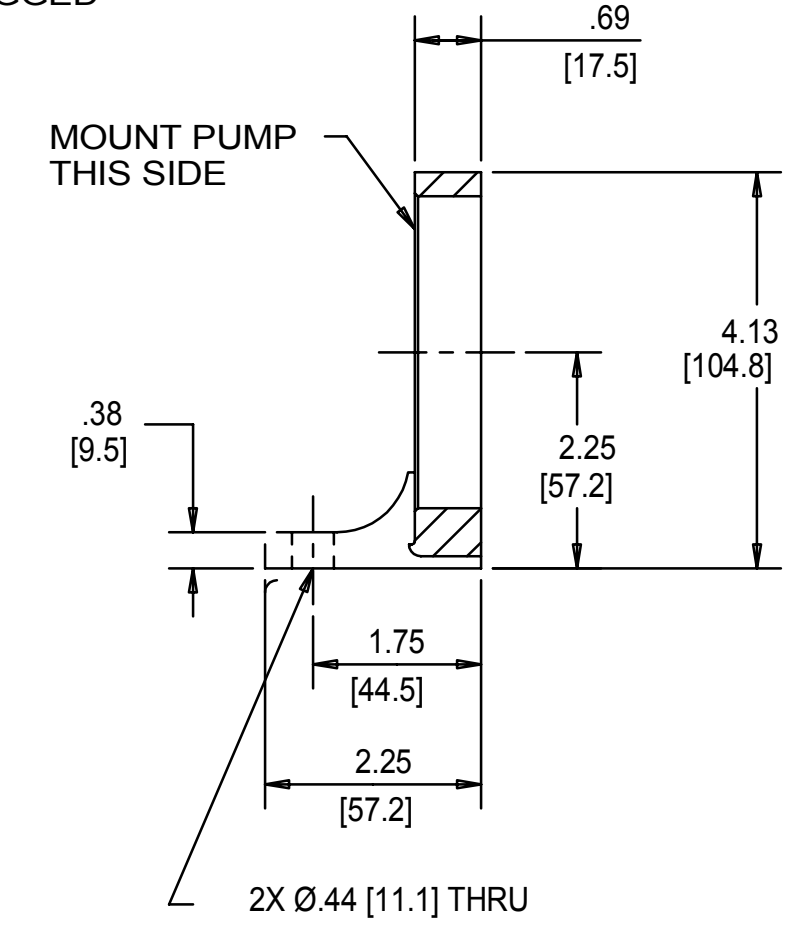
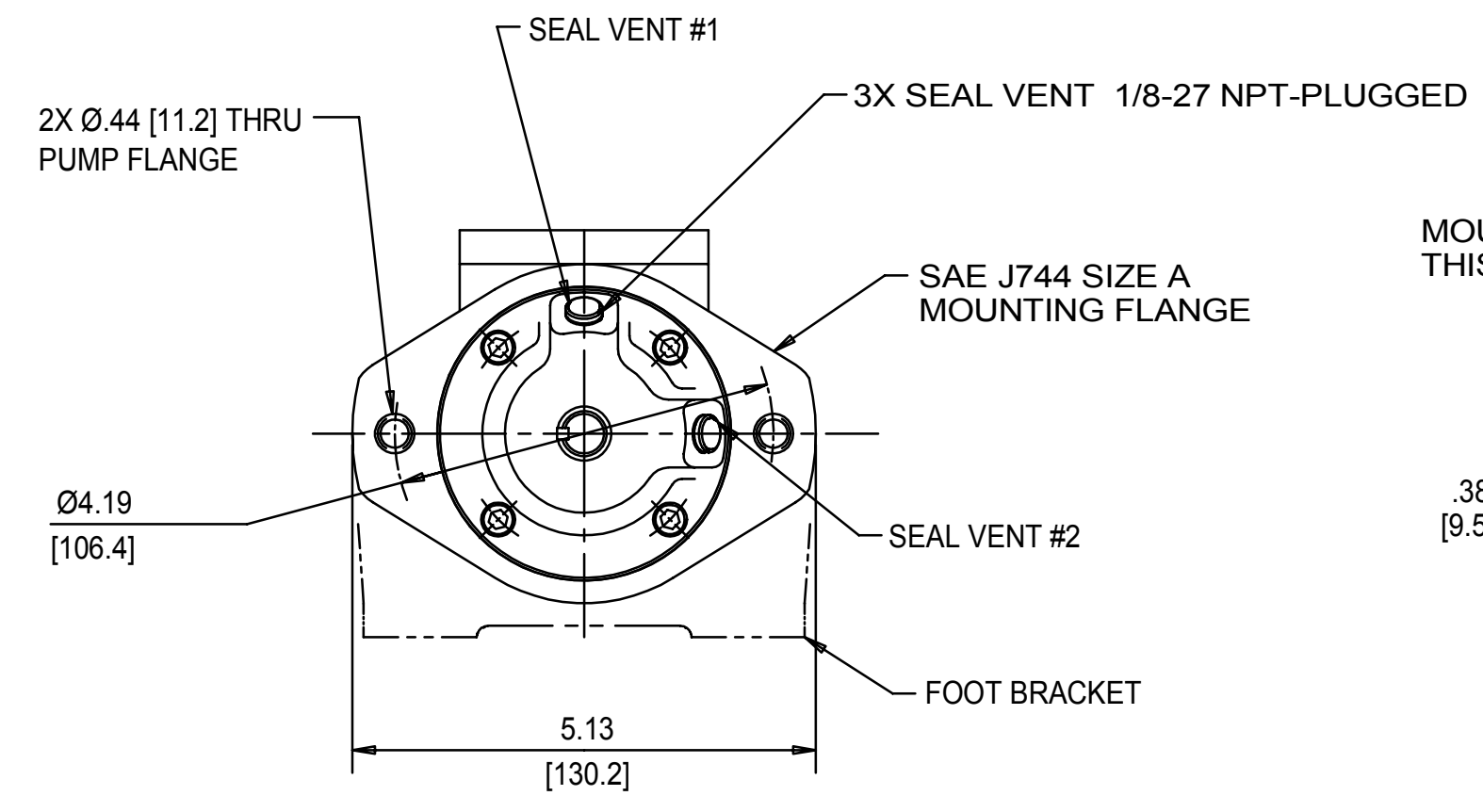
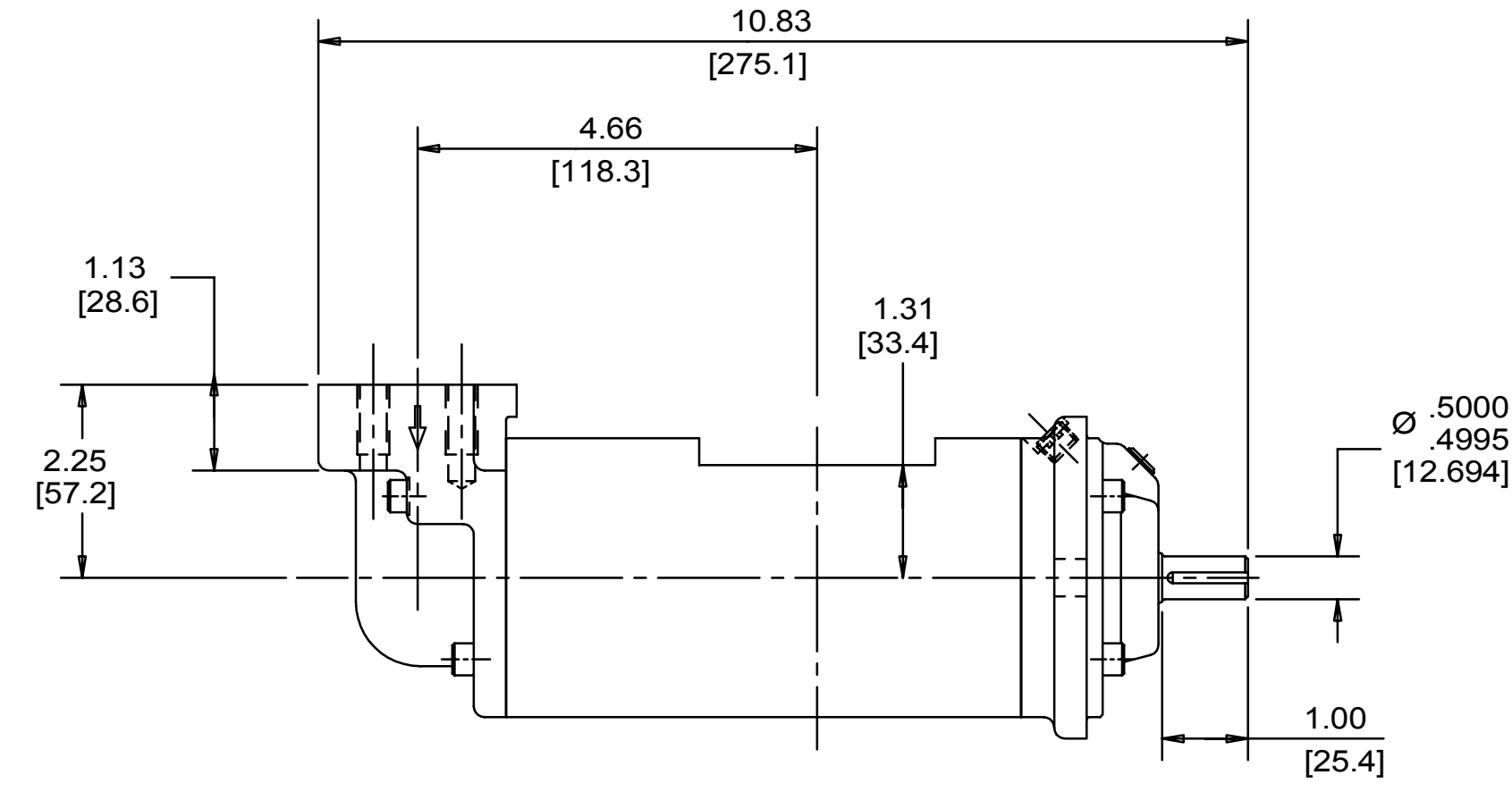
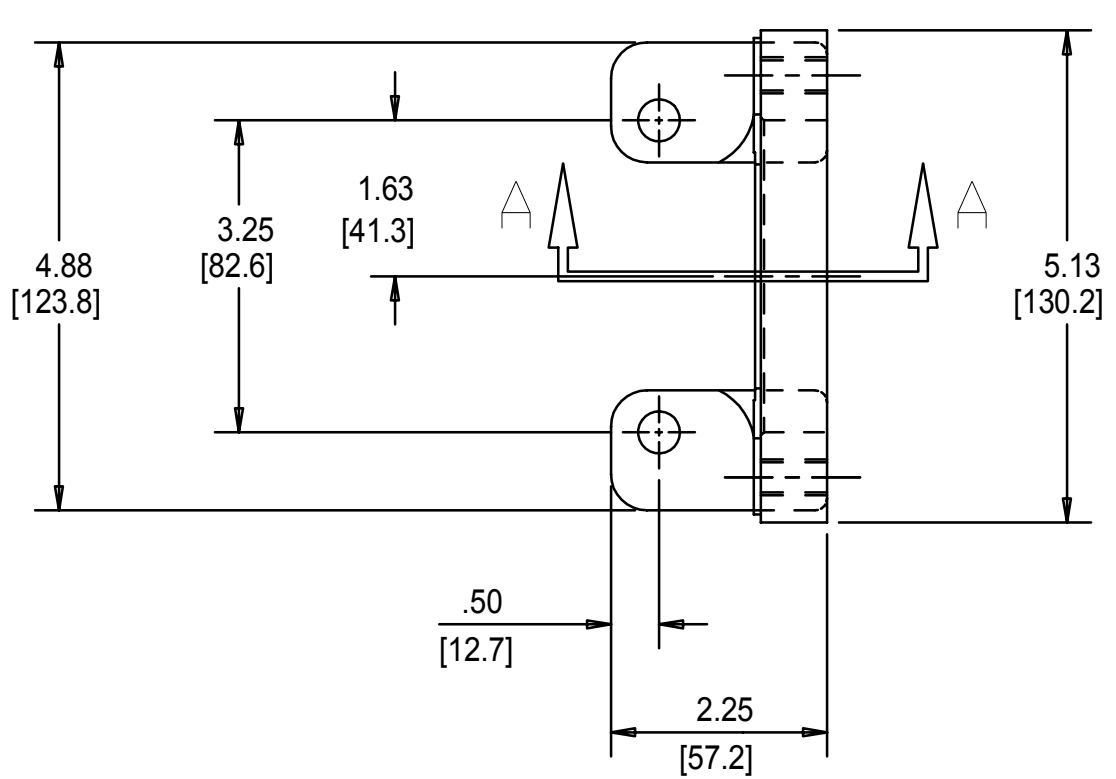
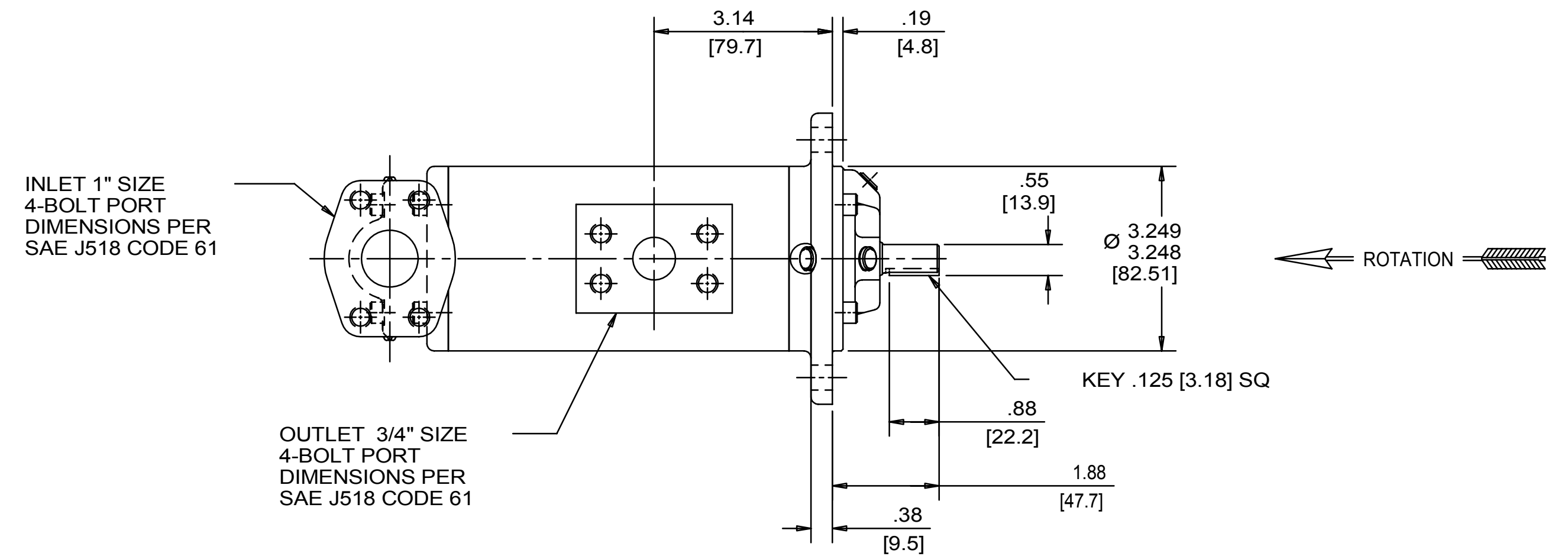
REVISION HISTORY					
CHG NO	ZONE	REV	DESCRIPTION	DATE	BY / APPROVED
11-0187	A1	9	CHANGED TITLE, WAS AA3G	5-16-11	ERH / ERH



INLET:
 FX= 37.5 LBF [169 N] MX= 62.5 LB FT [84.7 N.m]
 FY= 37.5 LBF [169 N] MY= 62.5 LB FT [84.7 N.m]
 FZ= 37.5 LBF [169 N] MZ= 62.5 LB FT [84.7 N.m]

OUTLET:
 FX= 28.1 LBF [125 N] MX= 46.9 LB FT [63.6 N.m]
 FY= 28.1 LBF [125 N] MY= 46.9 LB FT [63.6 N.m]
 FZ= 28.1 LBF [125 N] MZ= 46.9 LB FT [63.6 N.m]

FORCE AND MOMENT VALUES ARE RELATIVE TO CENTER OF INLET AND OUTLET PORT FACES.



DRAWING CERTIFICATION

SEAL VENT #1

12 O'CLOCK

9 O'CLOCK

6 O'CLOCK

3 O'CLOCK

SHAFT

SEE NOTES 1, 2 & 3

CUSTOMER NAME _____

CUSTOMER PO NUMBER _____

CUSTOMER PART NUMBER _____

BOM NUMBER _____

PUMP TYPE _____

SHAFT ROTATION _____

INLET PORT ORIENTATION _____

OUTLET PORT ORIENTATION _____

FOOT BRKT. ORIENTATION _____

INLET PORT OPTION _____

INLET ADAPTER OPTION _____

OUTLET ADAPTER OPTION _____

OTHER INFORMATION _____

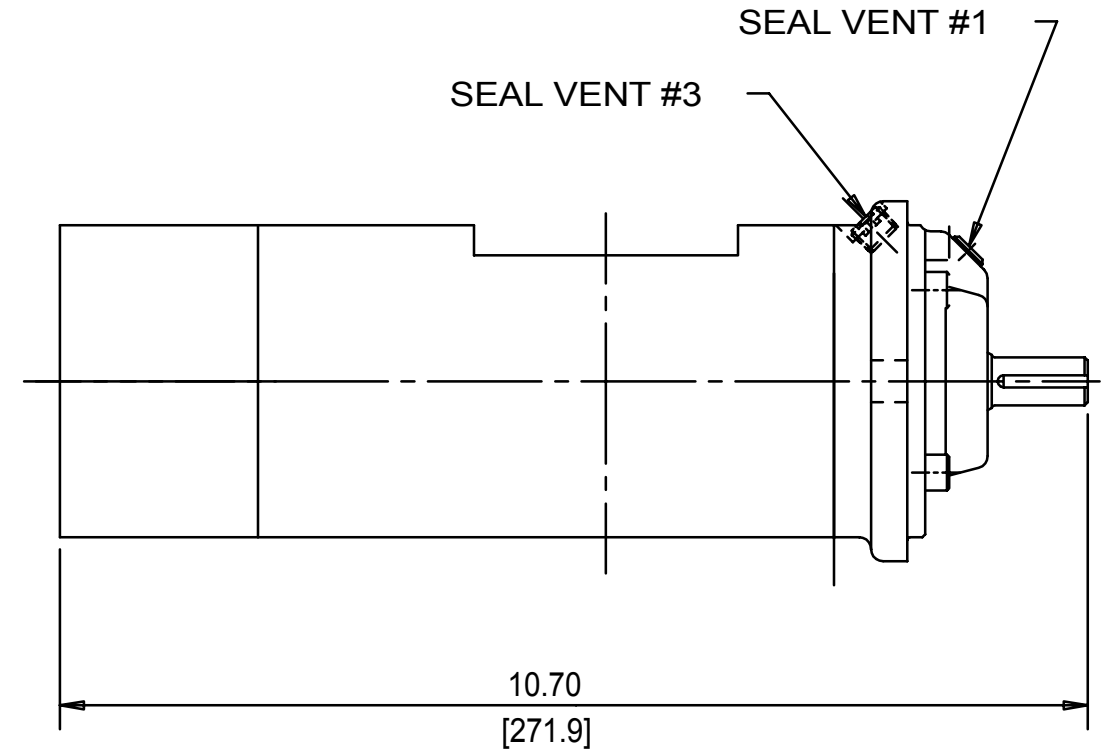
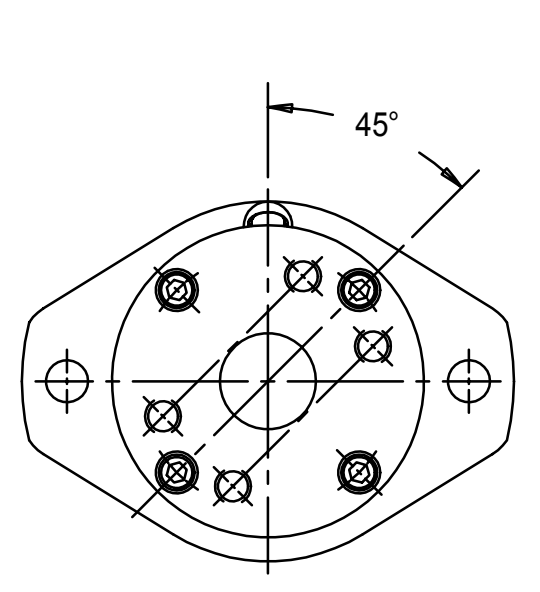
CERTIFIED BY _____

CERTIFIED DATE _____

IMO ORDER NUMBER _____

DATA REVISION NUMBER _____

VIEWS FOR ALTERNATE AXIAL INLET PORT CONFIGURATION



- NOTES:**
1. TO MAXIMIZE SEAL LIFE, SEAL VENT MUST BE ORIENTED UPWARD (12 O'CLOCK) WHEN PUMP IS INSTALLED HORIZONTALLY. VENT ORIENTATION IS NOT CRITICAL WHEN PUMP IS INSTALLED WITH SHAFT VERTICALLY UPWARD.
 2. PORT, FOOT, AND SEAL VENT ORIENTATIONS ARE SUPPLIED AS SHOWN ON DRAWING UNLESS OTHERWISE SPECIFIED.
 3. ALTERNATE PORT AND FOOT ORIENTATIONS ARE PROVIDED IF SPECIFIED ON ORDER. AVAILABLE ORIENTATIONS ARE 3, 6, 9, AND 12 O'CLOCK.
 4. BOLT PATTERN FOR SAE 4-BOLT AXIAL INLET IS ALWAYS ORIENTED AS SHOWN WITH RESPECT TO OUTLET PORT.
 5. APPROXIMATE PUMP WEIGHT (WITHOUT ADAPTERS):
 FLANGE MOUNT PUMP--- 18.0 LBS. (8.2 kgs)
 FOOT MOUNT PUMP---- 20.1 LBS. (9.1 kgs)
 6. UNLESS OTHERWISE SPECIFIED, ALL DIMENSIONS ARE IN INCHES. DIMENSIONS IN Ø ARE MILLIMETERS.

DRAWN	ERH	3-3-99	<p>Imo Pump 1710 Airport Road PO Box 5020 Monroe, NC USA 28111-5020</p>	TITLE	OUTLINE STANDARD (STEEL)		
CHECKED	NRS	3-25-99		SIZE	3G/_S__A095__	DWG NO	SDD19643
APPROV	MJC	3-25-99		SCALE	1/2	WEIGHT	SEE NOTE 5
PROCESS	UNLESS OTHERWISE SPECIFIED ASME Y14.5M-1994		METHODS	FIRST ORDER	E1102A	SHEET	1 OF 1