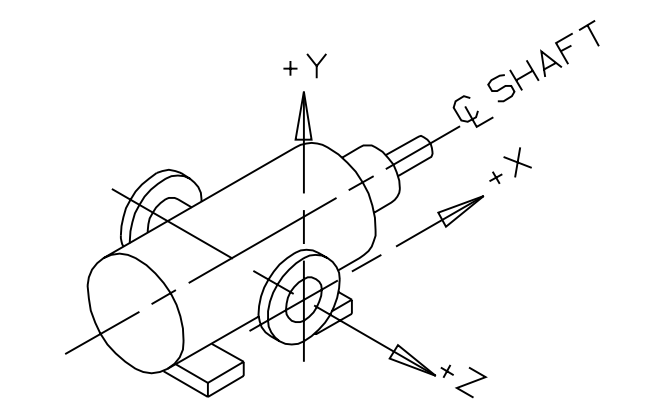
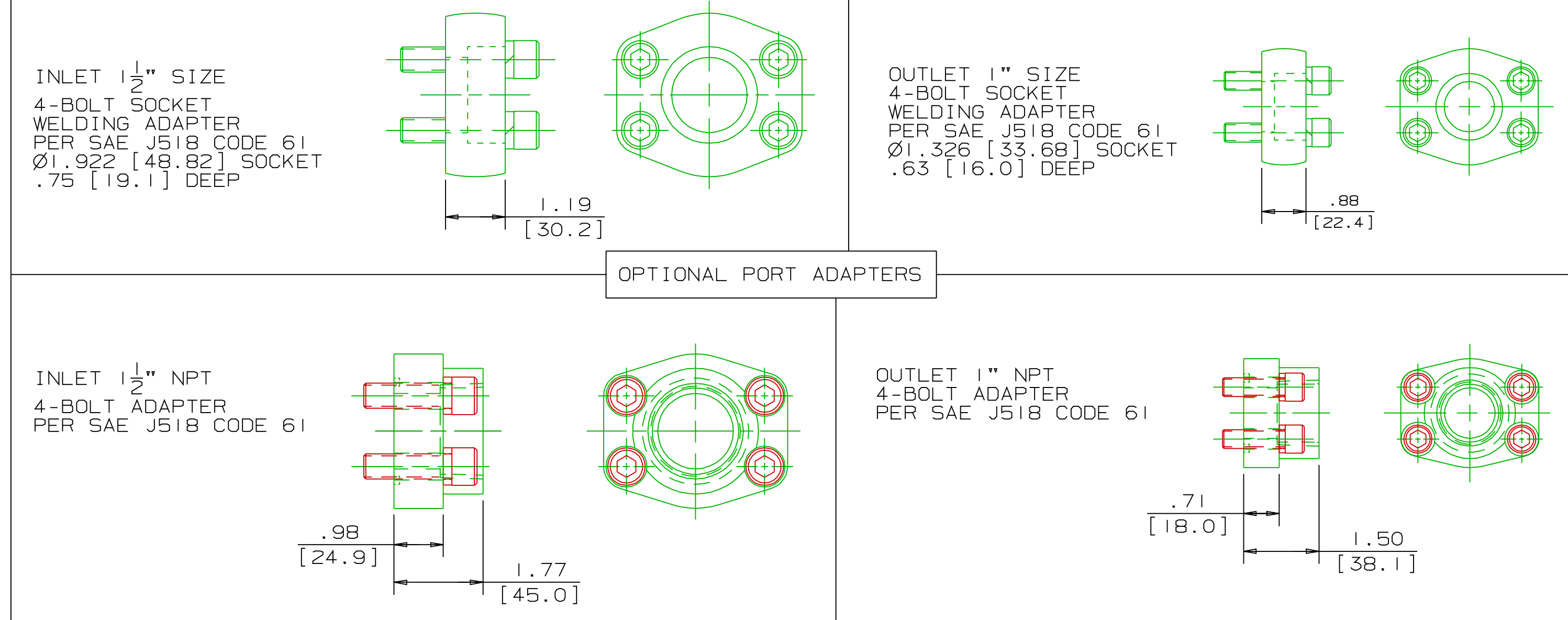
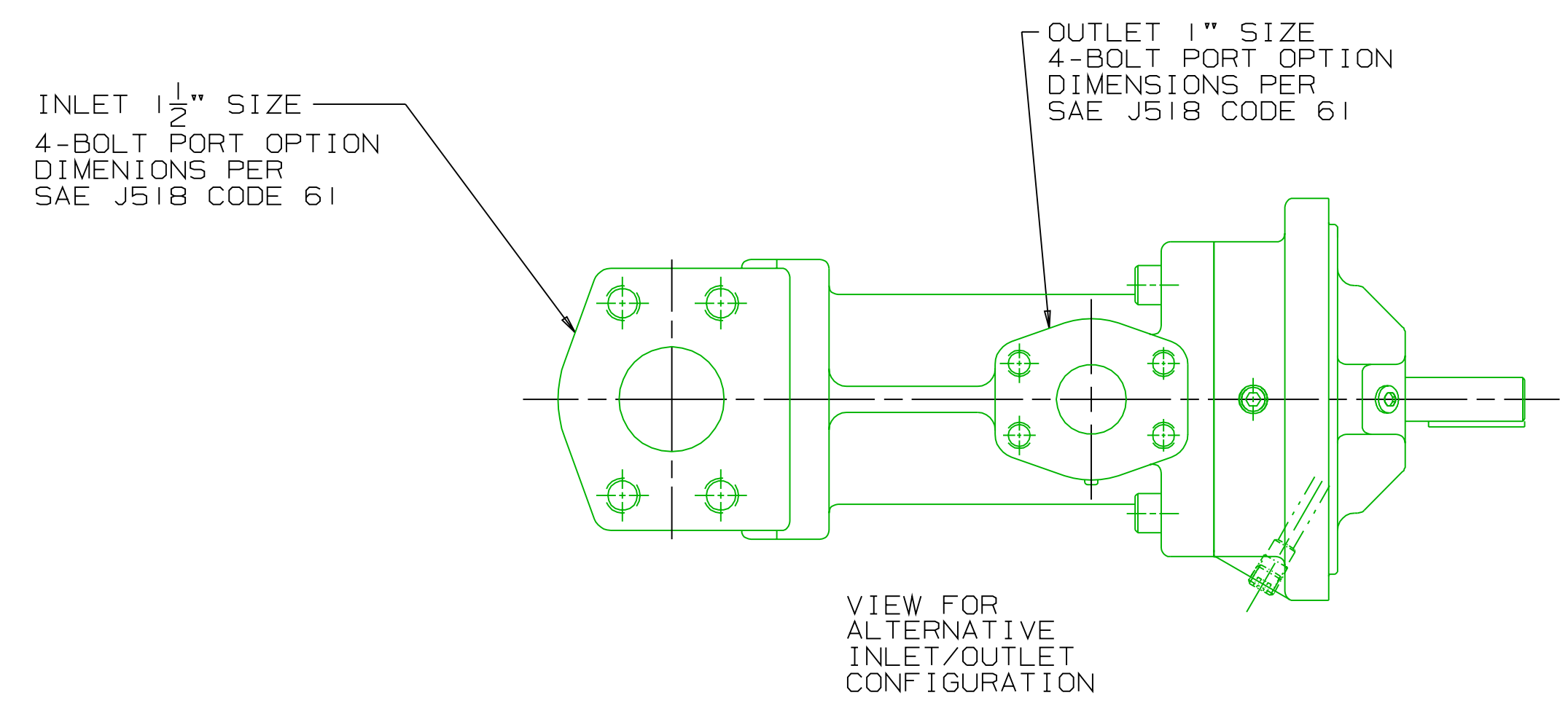


CHG NO	ZONE	REV	DESCRIPTION	DATE	BY	APPROVED
01-0287	ALL	8	ALL ADAPTERS UPDATED TO REFLECT 9/99 ANCHOR CATALOG	6-18-01	DMM	DMM
01-0435	ALL	9	UPDATED DRAWING TO BE CONSISTENT WITH STANDARD 3G OUTLINE	10-26-01	ERH	DMM
03-0197	E2,3,4,5	10	UPDATED NPT ADAPTERS TO CURRENT ANCHOR Dwg DATED 2-12-03	5-20-03	DMM	DMM

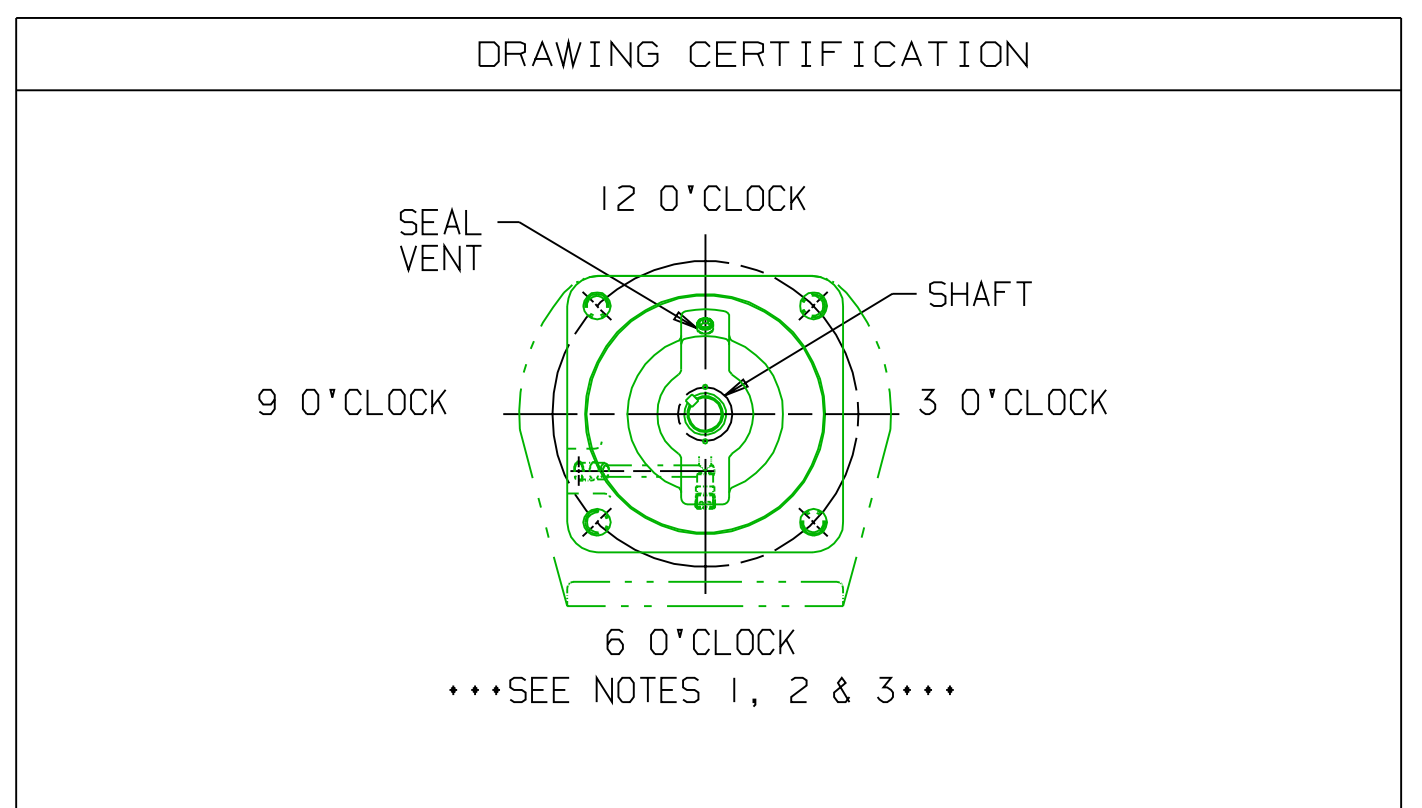
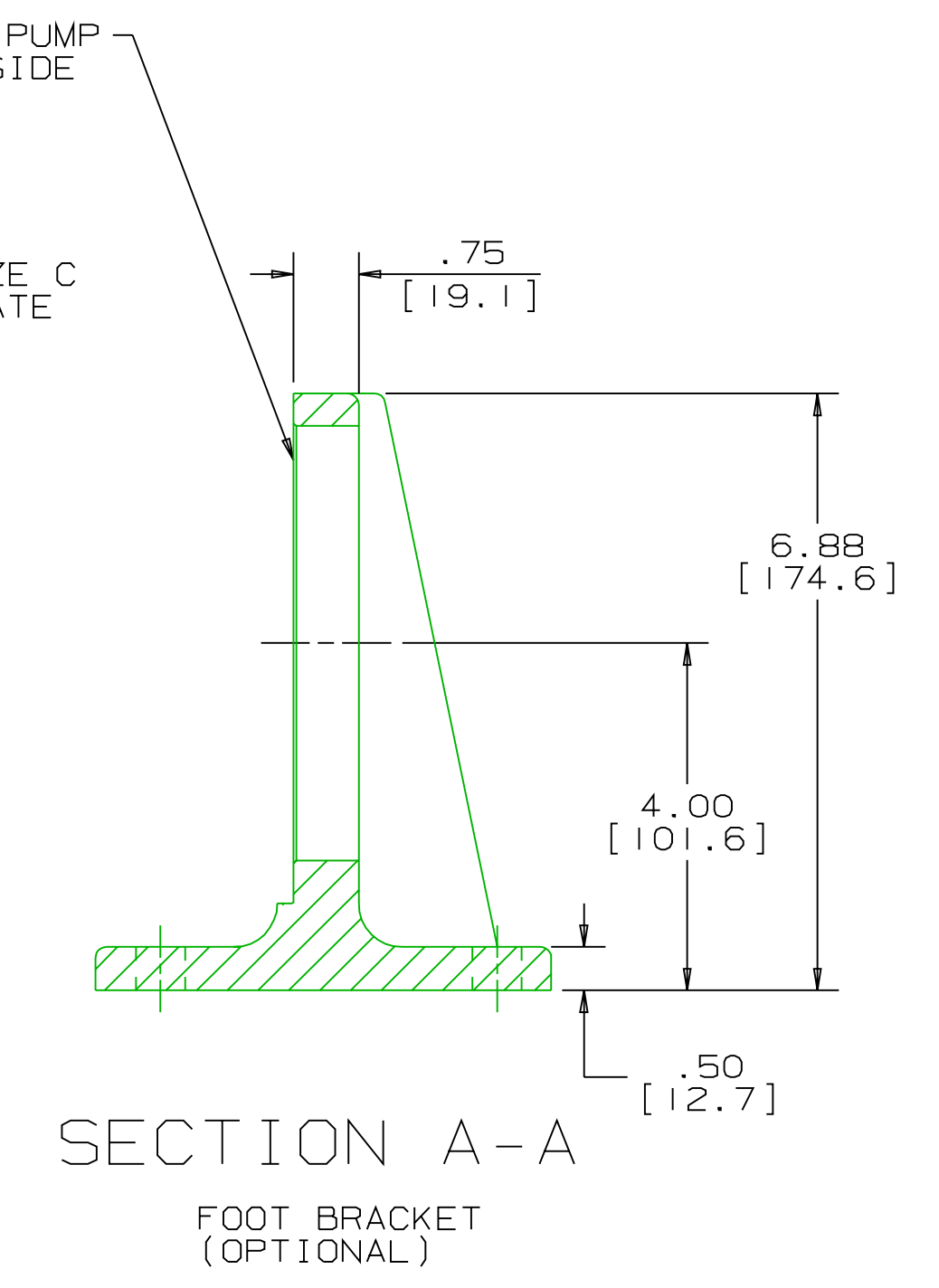
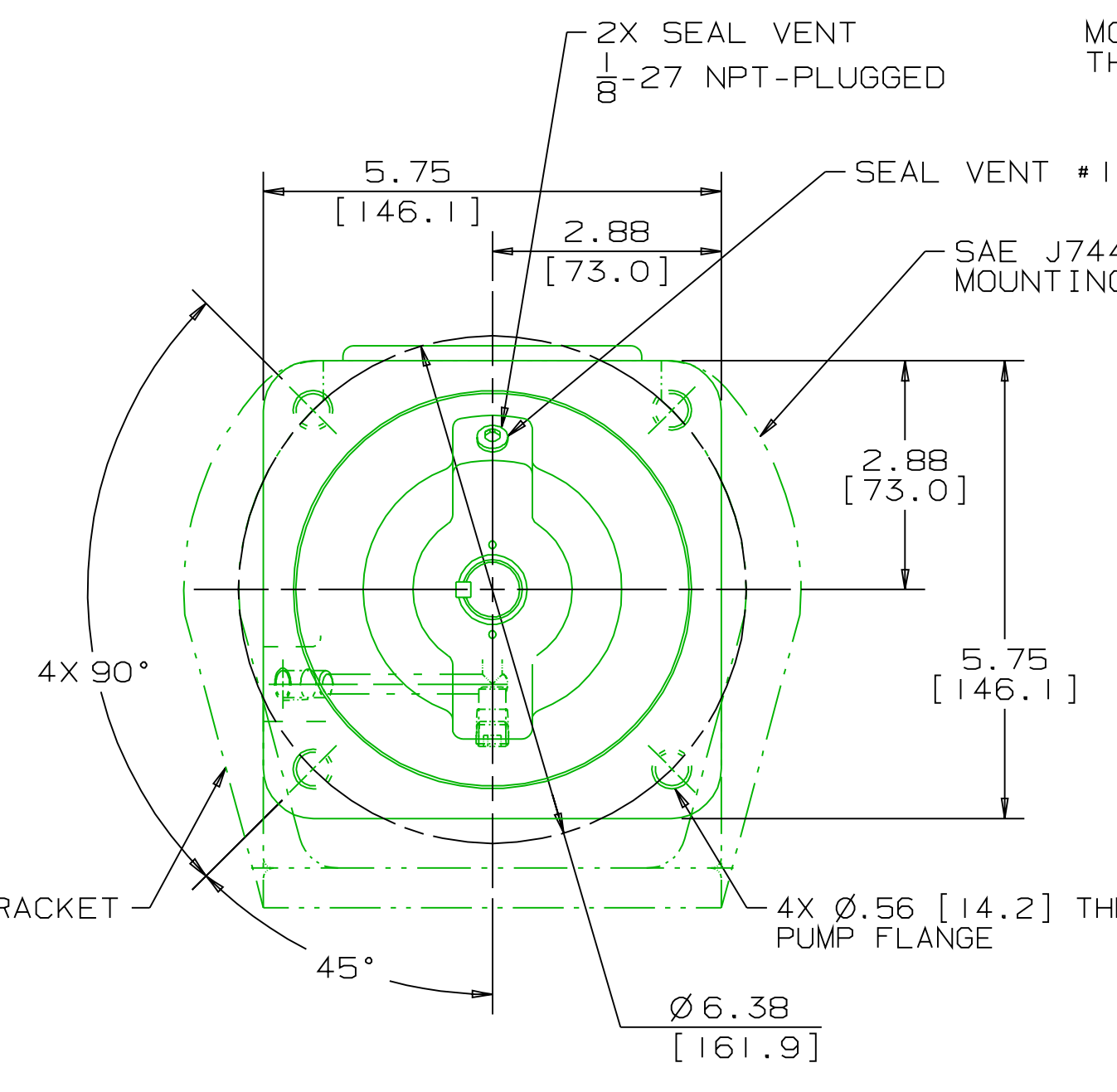
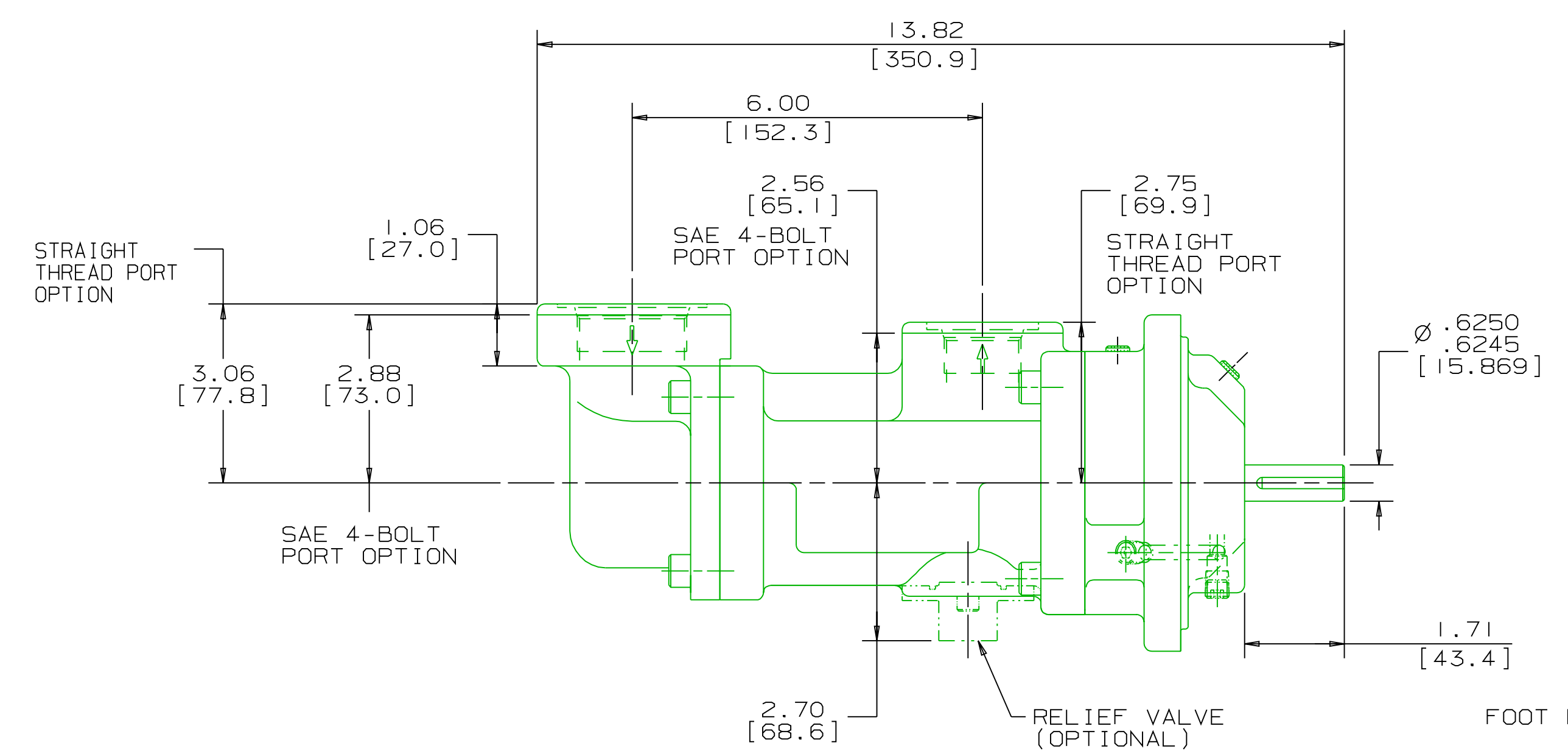
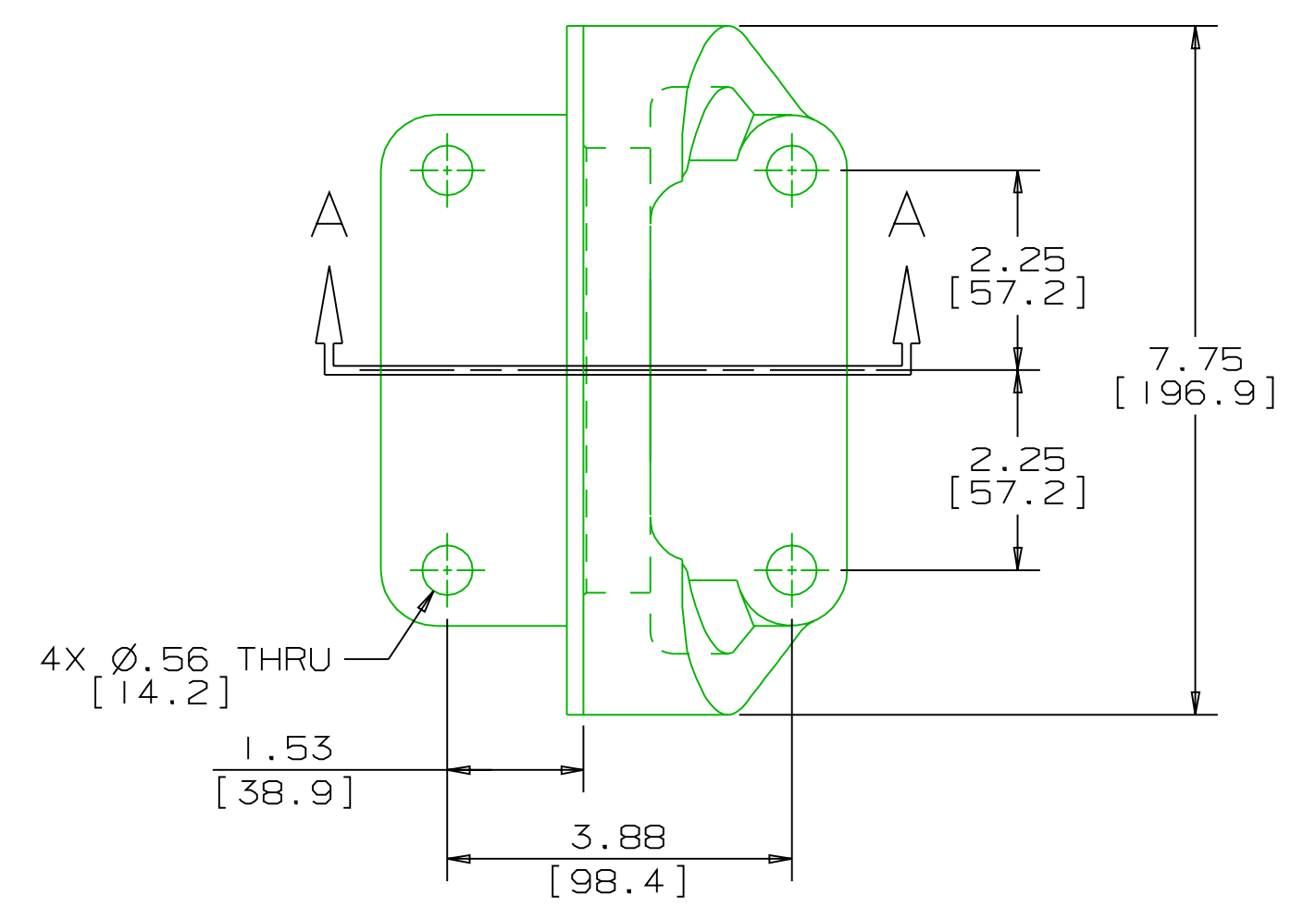
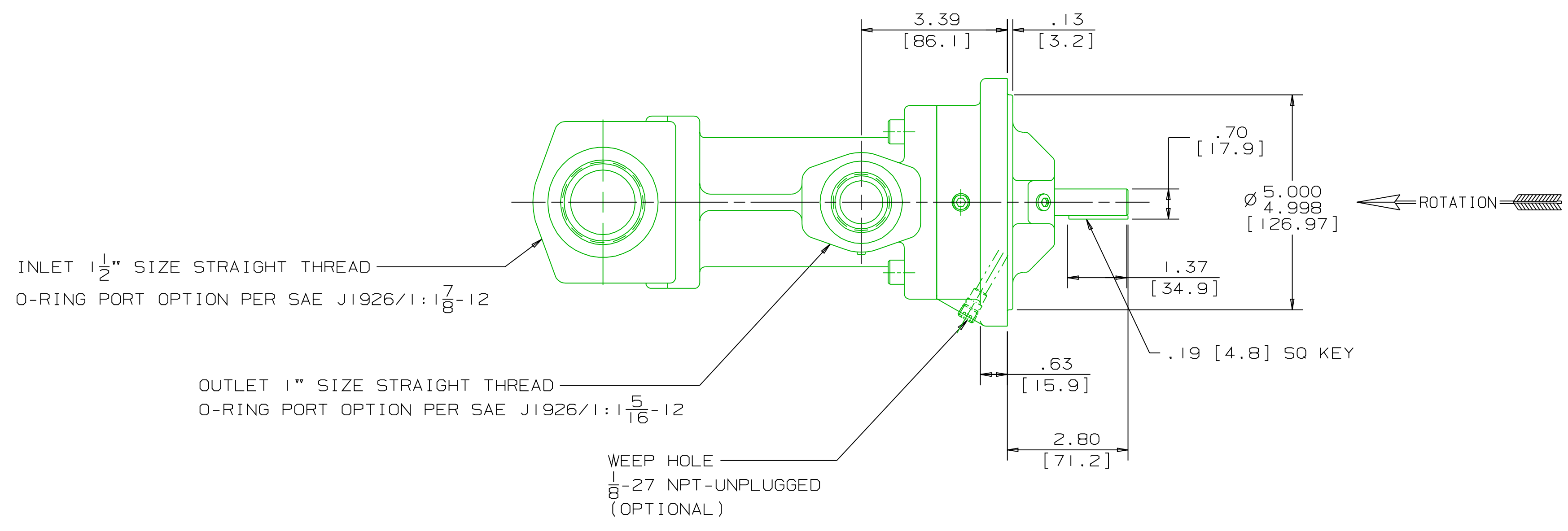


COORDINATE SYSTEM FOR MAXIMUM PUMP FORCES (F) AND MOMENTS (M)

INLET:
 FX=113 LBF [500 N] MX=188 LB FT [254 N·m]
 FY=113 LBF [500 N] MY=188 LB FT [254 N·m]
 FZ=113 LBF [500 N] MZ=188 LB FT [254 N·m]

OUTLET:
 FX=75 LBF [334 N] MX=125 LB FT [169 N·m]
 FY=75 LBF [334 N] MY=125 LB FT [169 N·m]
 FZ=75 LBF [334 N] MZ=125 LB FT [169 N·m]

FORCE AND MOMENT VALUES ARE RELATIVE TO CENTER OF INLET AND OUTLET PORT FACES.



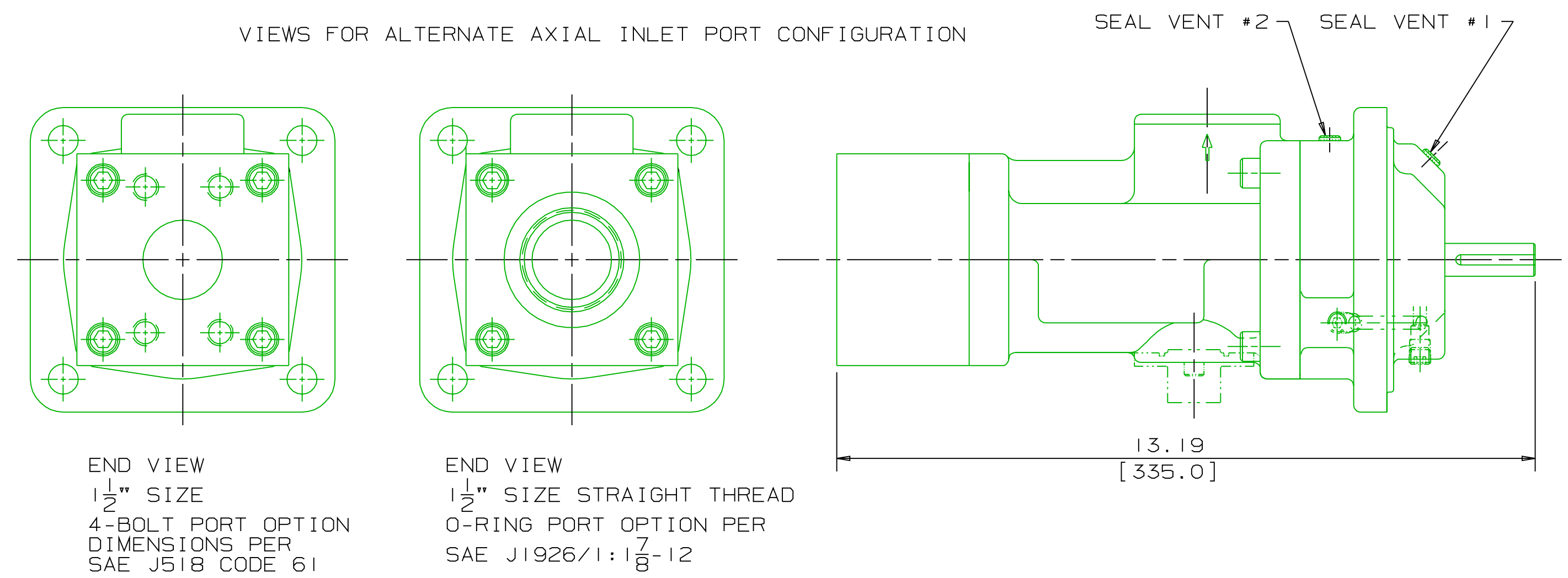
DRAWING CERTIFICATION

CUSTOMER NAME -----
 CUSTOMER PO NUMBER -----
 CUSTOMER PART NUMBER -----

BOM NUMBER -----
 PUMP TYPE -----
 SHAFT ROTATION -----
 INLET PORT ORIENTATION -----
 OUTLET PORT ORIENTATION -----
 FOOT BRKT. ORIENTATION -----
 INLET PORT OPTION -----
 INLET ADAPTER OPTION -----
 OUTLET PORT OPTION -----
 OUTLET ADAPTER OPTION -----
 RELIEF VALVE SET PRESSURE, IF APPLICABLE -----

OTHER INFORMATION

CERTIFIED BY -----
 CERTIFIED DATE -----
 IMO ORDER NUMBER -----
 DATA REVISION NUMBER -----



- NOTES:
- TO MAXIMIZE SEAL LIFE, SEAL VENT MUST BE ORIENTED VENTWARD (12 O'CLOCK) WHEN PUMP IS INSTALLED HORIZONTALLY. VENT ORIENTATION IS NOT CRITICAL WHEN PUMP IS INSTALLED WITH SHAFT VERTICALLY UPWARD.
 - PORT, FOOT, AND SEAL VENT ORIENTATIONS ARE SUPPLIED AS SHOWN ON DRAWING UNLESS OTHERWISE SPECIFIED.
 - ALTERNATE PORT AND FOOT ORIENTATIONS ARE PROVIDED IF SPECIFIED ON ORDER. AVAILABLE ORIENTATIONS ARE 3, 6, 9, AND 12 O'CLOCK.
 - BOLT PATTERN FOR SAE 4-BOLT AXIAL INLET IS ALWAYS ORIENTED AS SHOWN WITH RESPECT TO OUTLET PORT.
 - APPROXIMATE PUMP WEIGHT (WITHOUT ADAPTERS):
 FLANGE MOUNT PUMP-- 33.9 LBS. [15.4 kgs]
 FOOT MOUNT PUMP---- 46.1 LBS. [21.0 kgs]
 - UNLESS OTHERWISE SPECIFIED ALL DIMENSIONS ARE IN INCHES. DIMENSIONS IN [] ARE MILLIMETERS.

MATERIAL
 PROCESS
 COMMENTS:
 STANDARD ROTATION IS CLOCKWISE WHEN VIEWED FROM COUPLER END OF PUMP. SUCTION STRAINER AND DISCHARGE RELIEF VALVE MUST BE PROVIDED.
 UNITS ARE ACCURATELY ALIGNED AT THE FACTORY. ALIGNMENT SHOULD BE CHECKED BEFORE STARTING TO ENSURE THAT IT IS STILL WITHIN .005 [0.13] FTM.
 FLUSH SUCTION PIPING BEFORE CONNECTING PUMP. PRIME AND VENT PUMP. DO NOT START PUMP WITH VALVES CLOSED. READ INSTRUCTION MANUAL FOR DETAILS BEFORE STARTING.

WEB ADDRESS: WWW.IMO-PUMP.COM	EMAIL: IMO.PUMP@COLFAXCORP.COM
DRAWN ERH 11-19-98	CHECKED CDG 01-07-99
APPROD MJC 01-07-99	METHODS
Imo Pump 1710 Airport Road PO Box 5020 Monroe, NC USA 28111.5020	
TITLE OUTLINE STANDARD (IRON) AA3G/118	
SIZE F	Dwg No 59180
SCALE 1/2	WEIGHT SEE NOTE 5
SHEET 1	OF 1