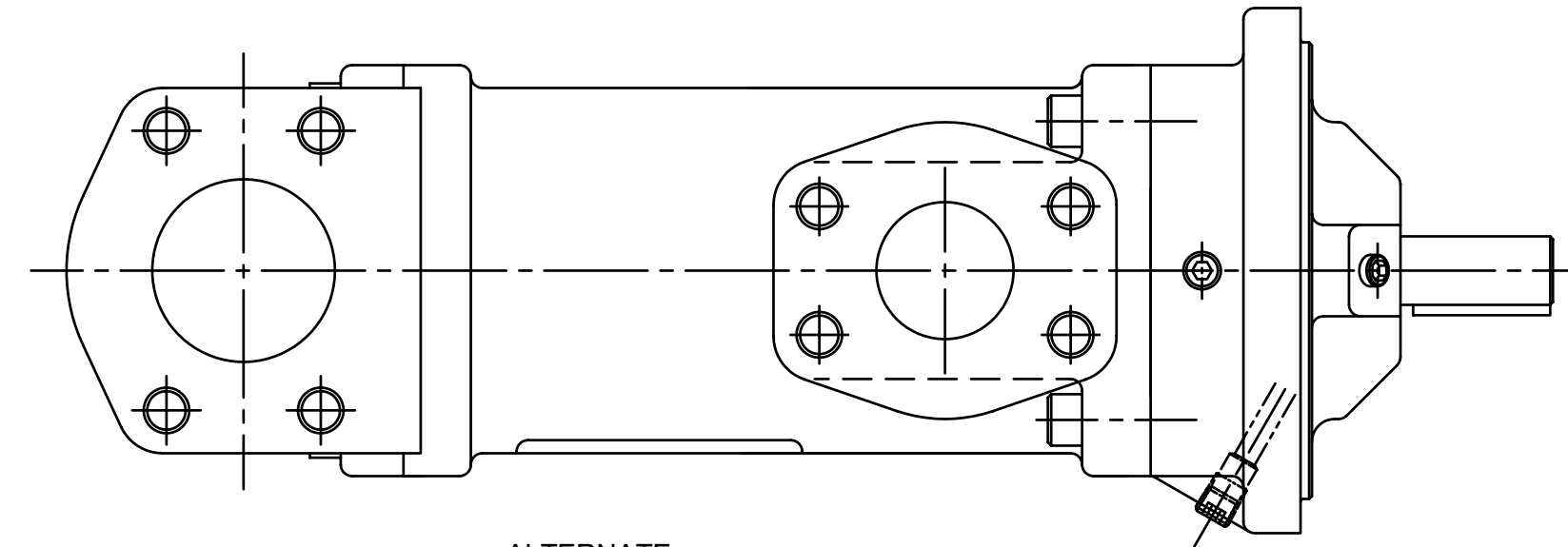


REVISION HISTORY				DATE	BY	APPROVED
CHG NO	ZONE	REV	DESCRIPTION			
11-0187	A1	16	CHANGED TITLE, WAS AA3G	5-16-11	ERH	ERH

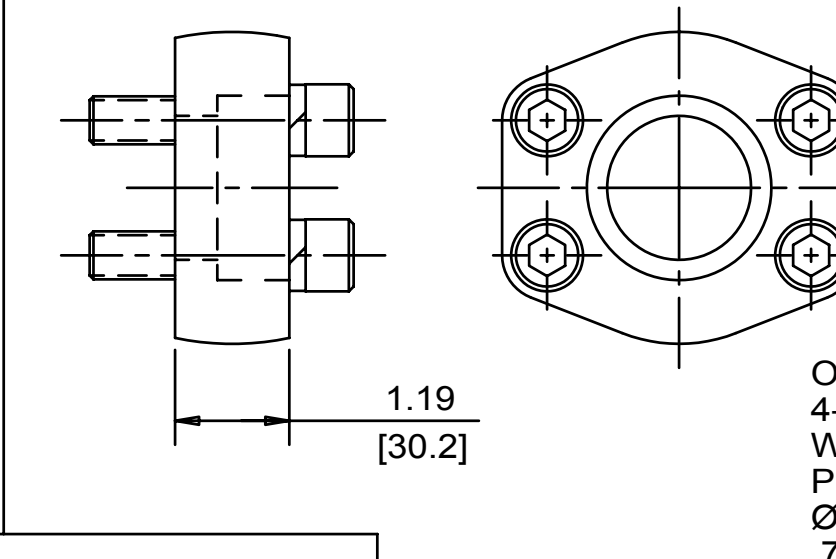
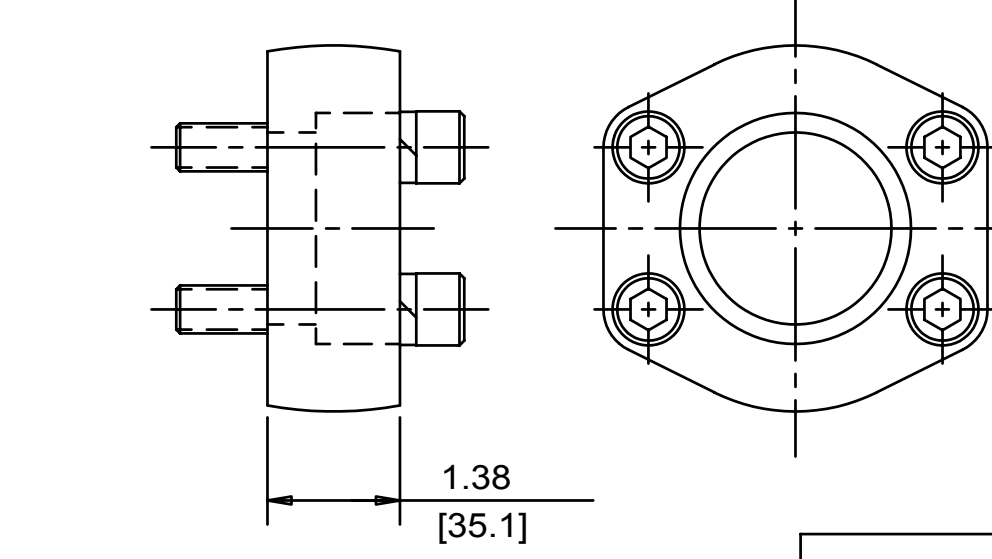
INLET 2" SIZE  
4-BOLT PORT OPTION  
DIMENSIONS PER  
SAE J518 CODE 61

OUTLET 1-1/2" SIZE  
4-BOLT PORT OPTION  
DIMENSIONS PER  
SAE J518 CODE 61



ALTERNATE  
INLET/OUTLET  
CONFIGURATION

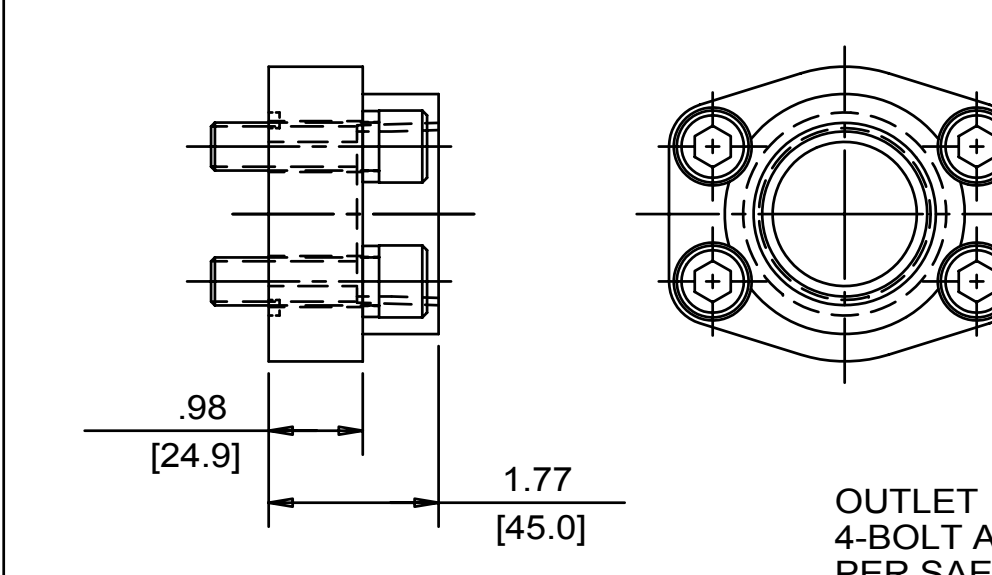
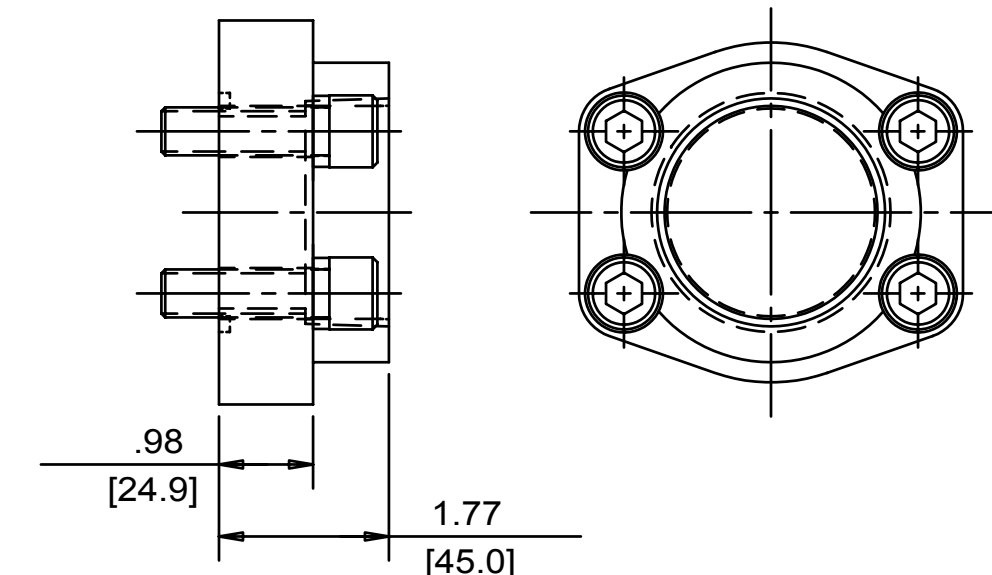
INLET 2" SIZE  
4-BOLT SOCKET  
WELDING ADAPTER  
PER SAE J518 CODE 61  
Ø2.406 [61.11] SOCKET  
.88 [22.4] DEEP



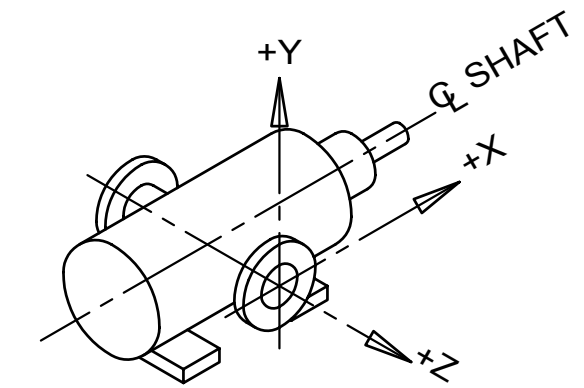
OUTLET 1 1/2" SIZE  
4-BOLT SOCKET  
WELDING ADAPTER  
PER SAE J518 CODE 61  
Ø1.922 [48.82] SOCKET  
.75 [19.1] DEEP

OPTIONAL PORT ADAPTERS

INLET 2" NPT  
4-BOLT ADAPTER  
PER SAE J518 CODE 61



OUTLET 1 1/2" NPT  
4-BOLT ADAPTER  
PER SAE J518 CODE 61

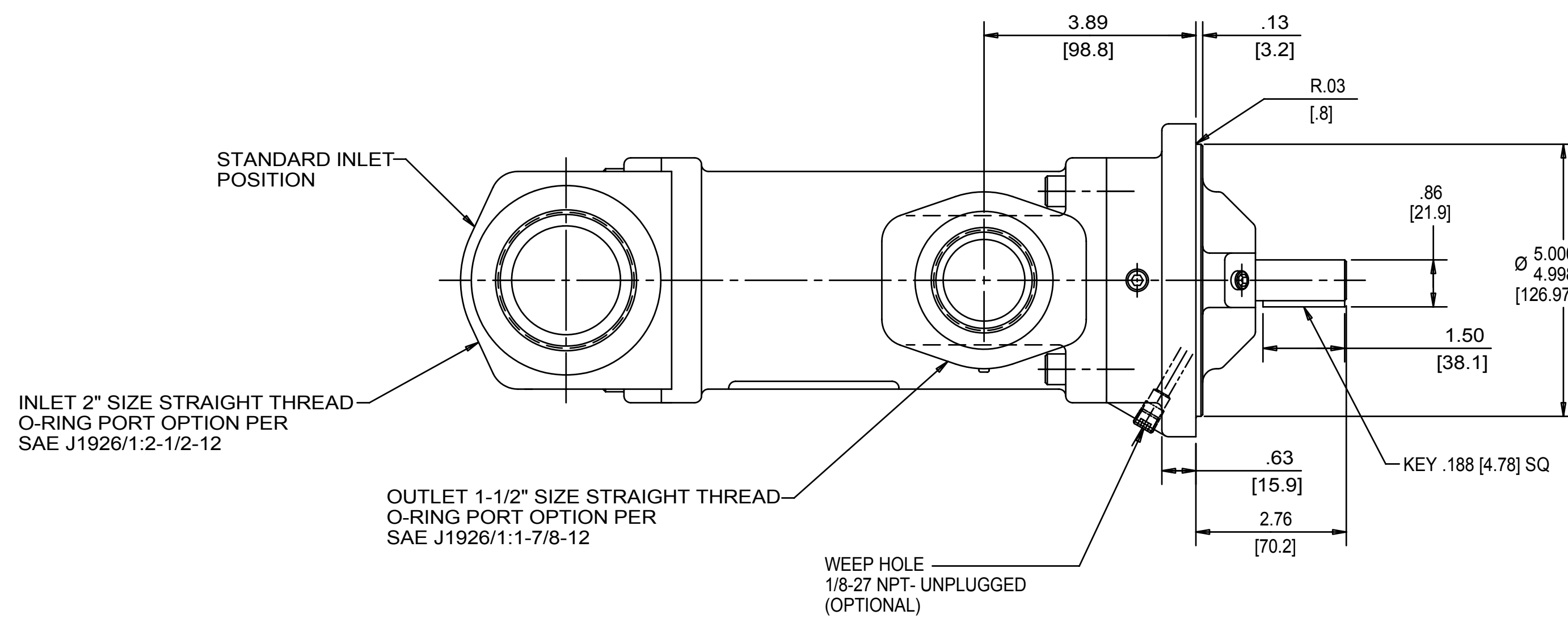


COORDINATE SYSTEM FOR MAXIMUM  
PUMP FORCES (F) AND MOMENTS (M)

INLET:  
FX= 150 LBF [667 N] MX= 250 LB FT [339 N.m]  
FY= 150 LBF [667 N] MY= 250 LB FT [339 N.m]  
FZ= 150 LBF [667 N] MZ= 250 LB FT [339 N.m]

OUTLET:  
FX= 113 LBF [500 N] MX= 188 LB FT [254 N.m]  
FY= 113 LBF [500 N] MY= 188 LB FT [254 N.m]  
FZ= 113 LBF [500 N] MZ= 188 LB FT [254 N.m]

FORCE AND MOMENT VALUES ARE RELATIVE TO  
CENTER OF INLET AND OUTLET PORT FACES.



STANDARD INLET  
POSITION

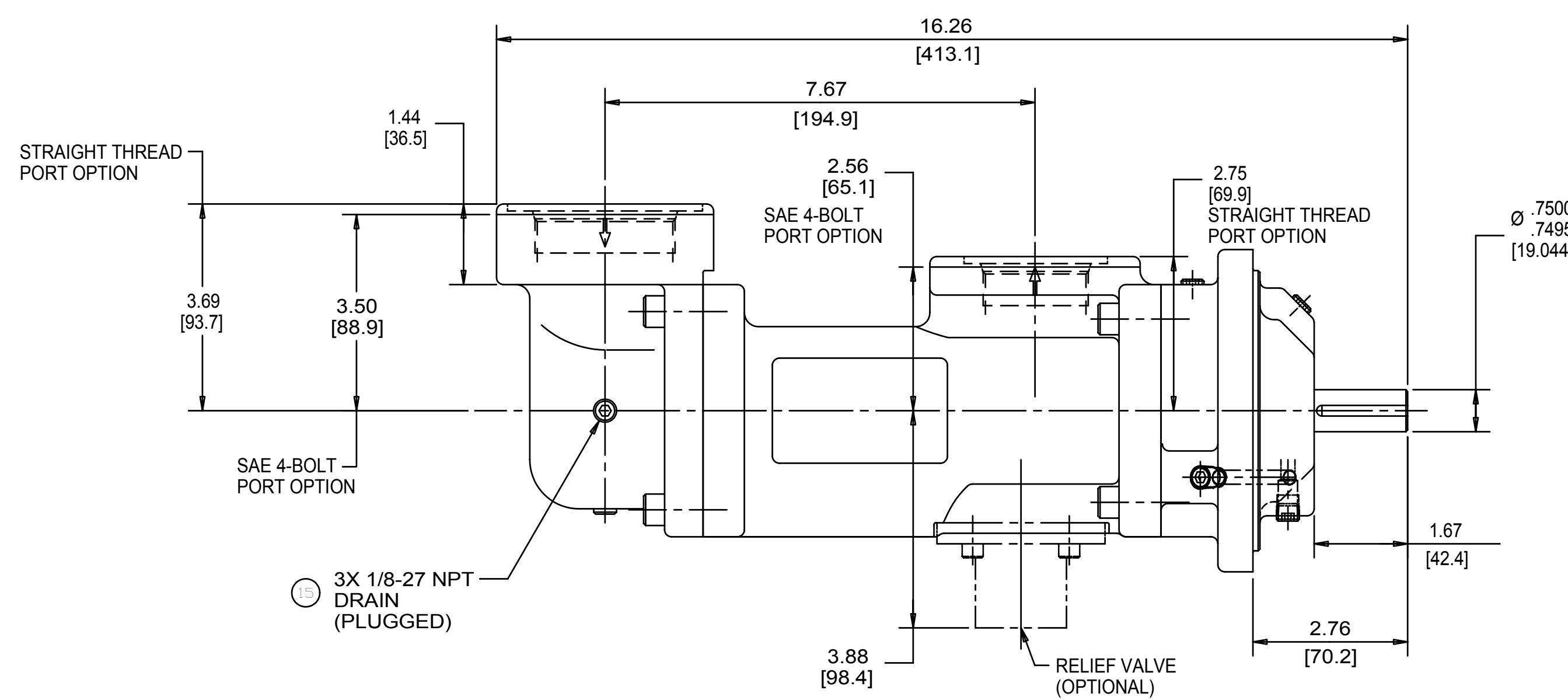
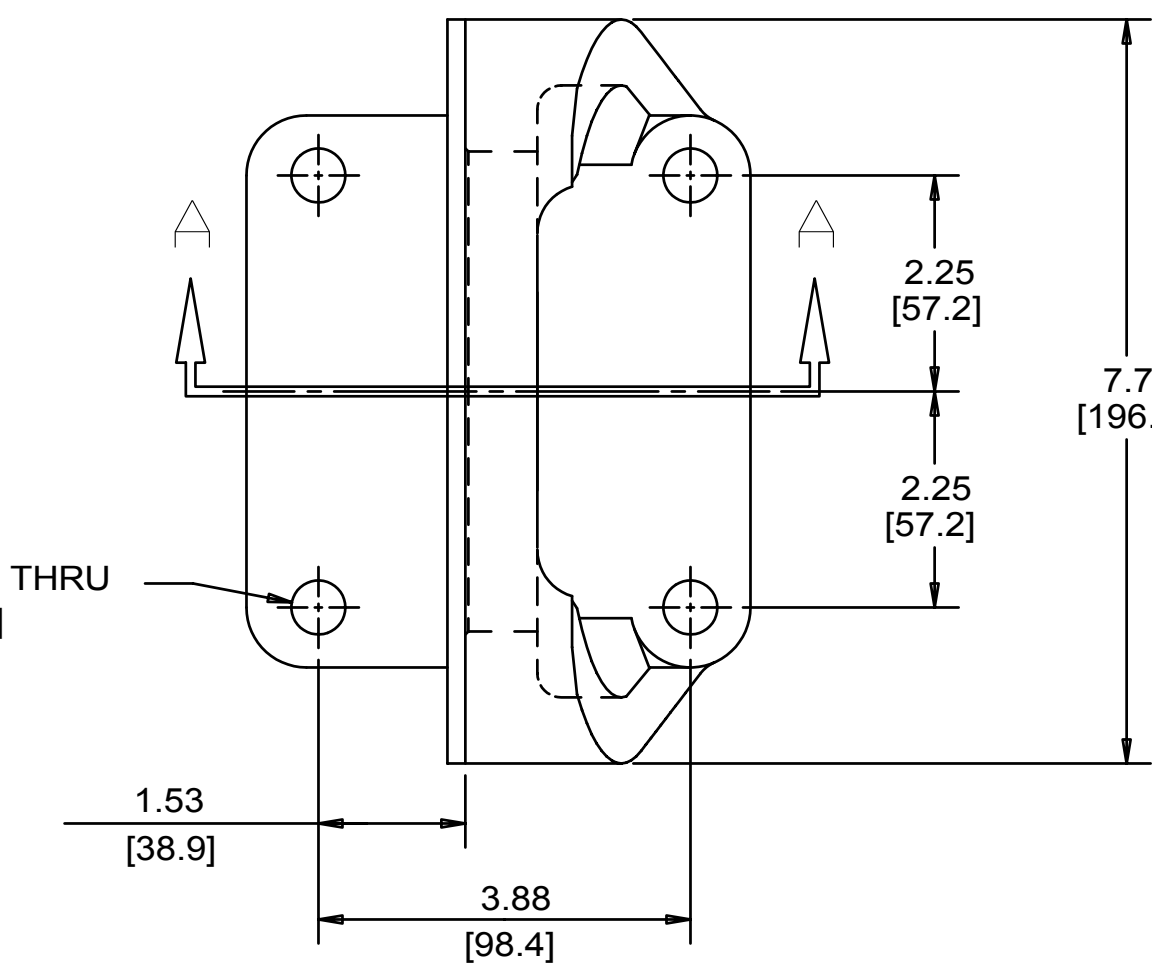
INLET 2" SIZE STRAIGHT THREAD  
O-RING PORT OPTION PER  
SAE J1926/1:2-1/2-12

OUTLET 1-1/2" SIZE STRAIGHT THREAD  
O-RING PORT OPTION PER  
SAE J1926/1:1-7/8-12

WEEP HOLE  
1/8-27 NPT-UNPLUGGED  
(OPTIONAL)

ROTATION

4X Ø.56 THRU  
[14.2]



STRAIGHT THREAD  
PORT OPTION

1.44  
[36.5]

3.69  
[93.7]

3.50  
[88.9]

16.26  
[413.1]

7.67  
[194.9]

2.56  
[65.1]

2.75  
[69.9]

1.67  
[42.4]

3.88  
[98.4]

2.76  
[70.2]

Ø 7500  
7495  
[19.044]

Ø 5.000  
4.998  
[126.97]

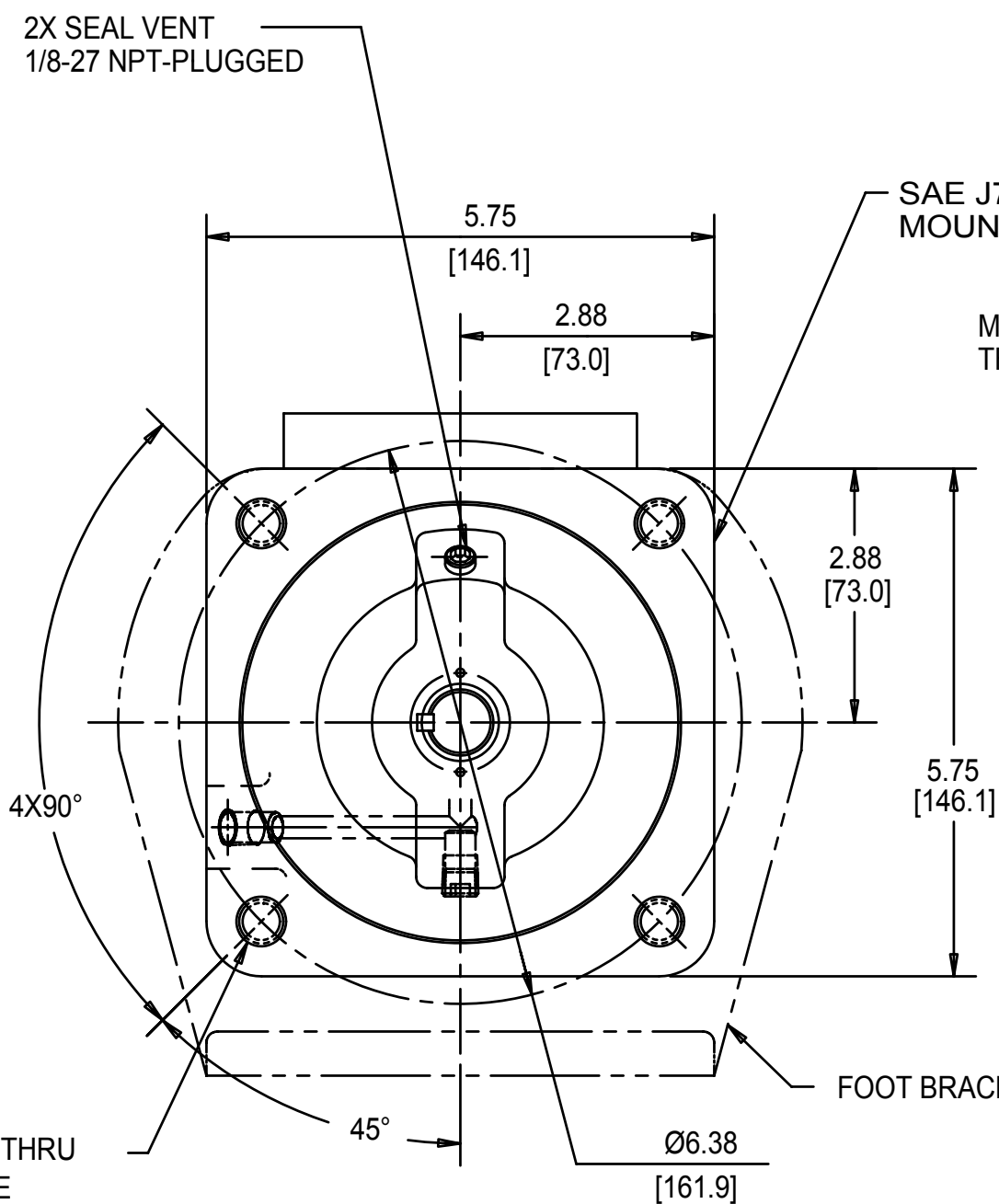
1.50  
[38.1]

.86  
[21.9]

R.03  
[.8]

.63  
[15.9]

2.76  
[70.2]



2X SEAL VENT  
1/8-27 NPT-PLUGGED

5.75  
[146.1]

2.88  
[73.0]

5.75  
[146.1]

45°

Ø6.38  
[161.9]

2.88  
[73.0]

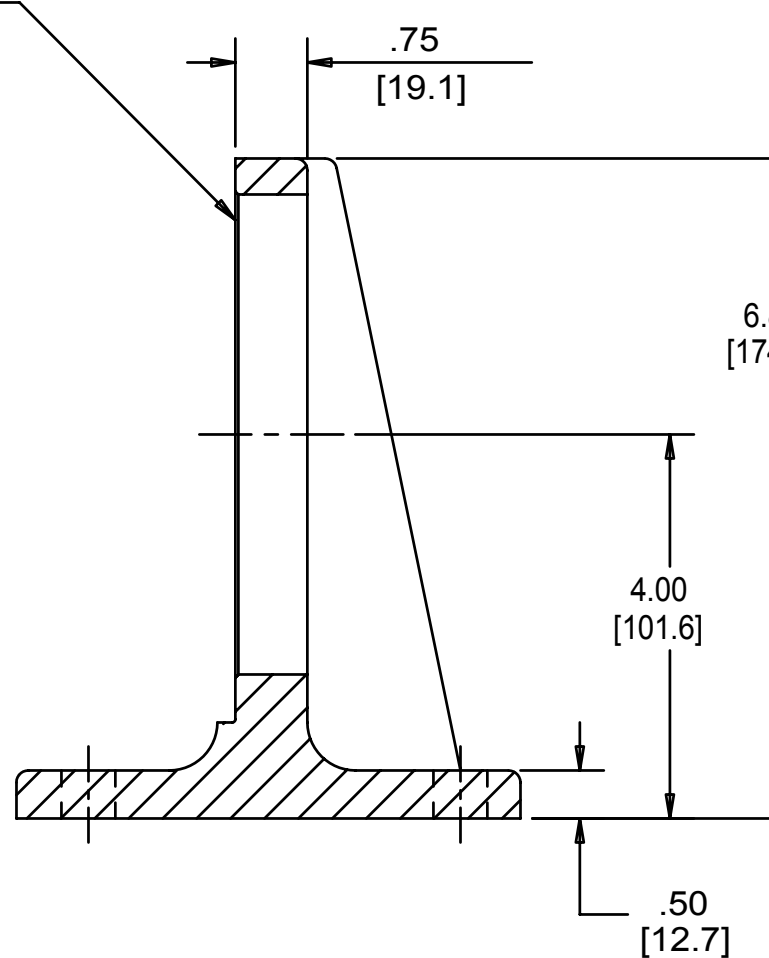
4X Ø.56 [14.2] THRU  
PUMP FLANGE

4X90°

FOOT BRACKET

SAE J744 SIZE C  
MOUNTING FLANGE

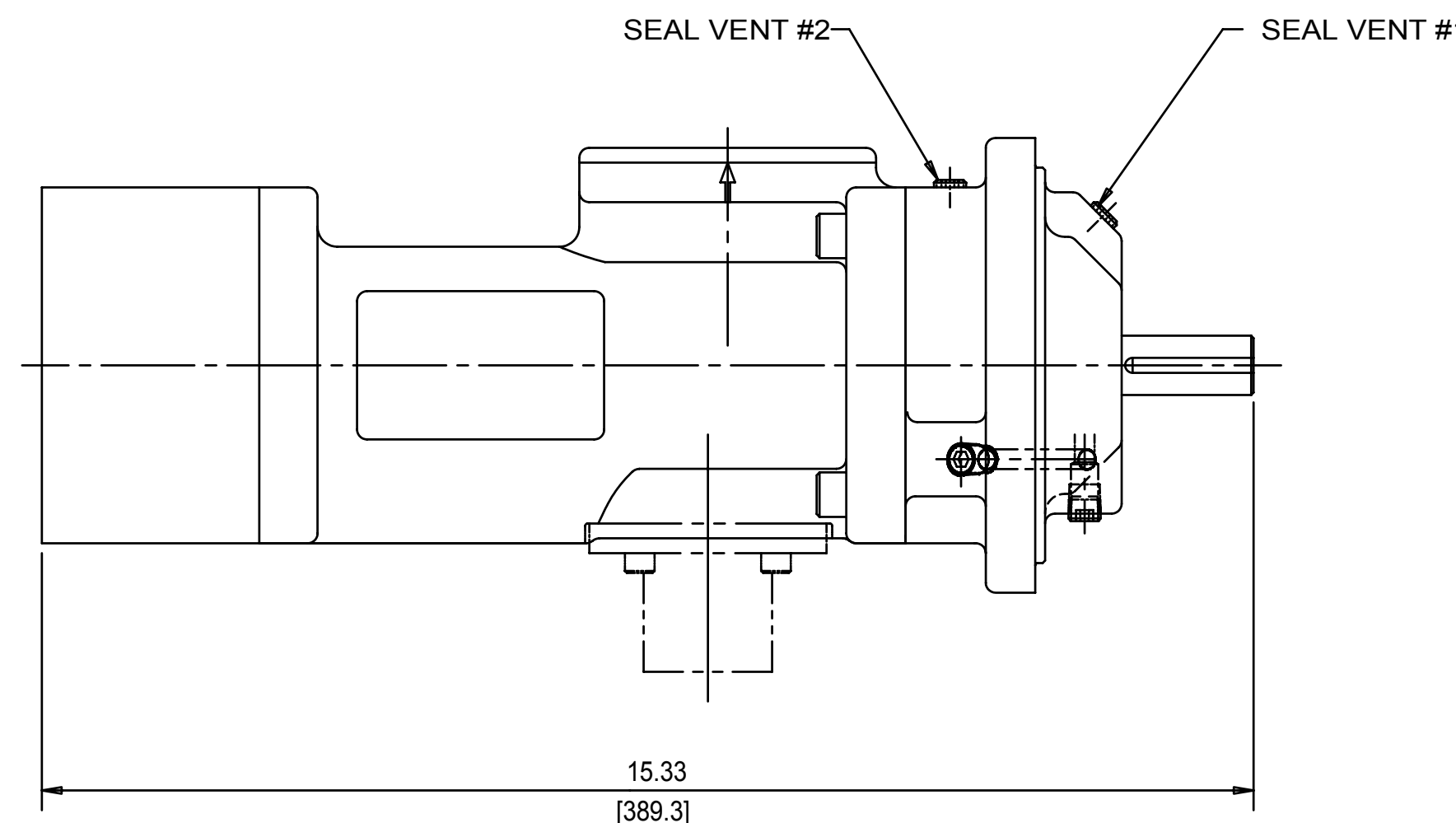
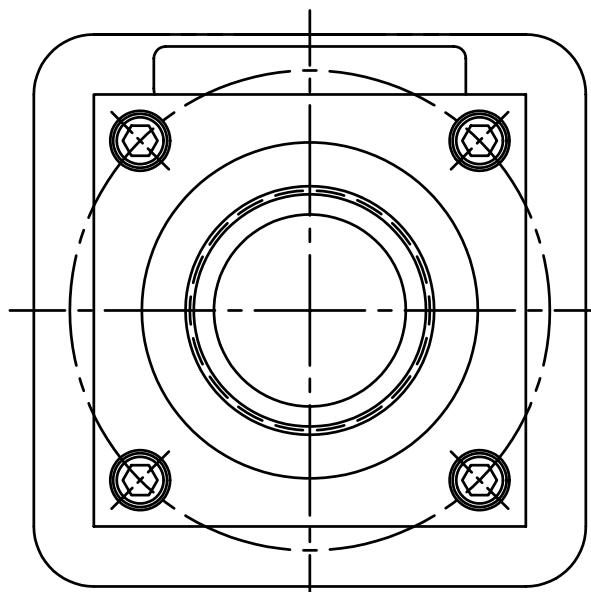
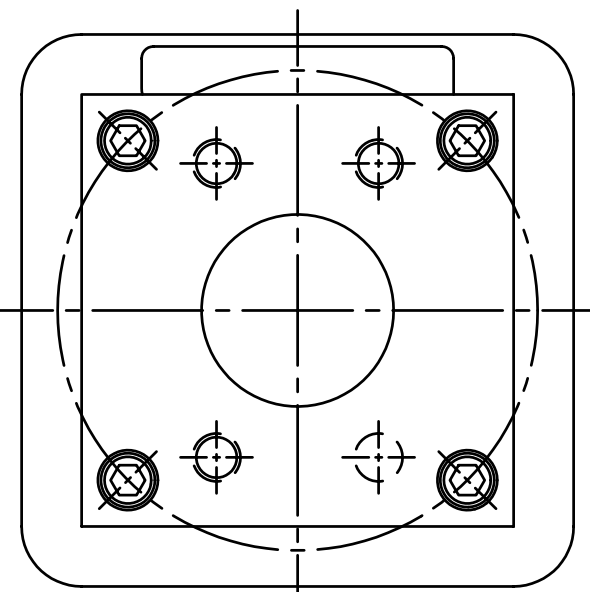
MOUNT PUMP  
THIS SIDE



SECTION A-A

FOOT BRACKET  
(OPTIONAL)

VIEWS FOR ALTERNATIVE AXIAL INLET PORT CONFIGURATION



SEAL VENT #2

SEAL VENT #1

15.33  
[389.3]

NOTES:

- TO MAXIMIZE SEAL LIFE, SEAL VENT MUST BE ORIENTED UPWARD (12 O'CLOCK) WHEN PUMP IS INSTALLED HORIZONTALLY. VENT ORIENTATION IS NOT CRITICAL WHEN PUMP IS INSTALLED WITH SHAFT VERTICALLY UPWARD.
- PORT, FOOT, AND SEAL VENT ORIENTATIONS ARE SUPPLIED AS SHOWN ON DRAWING UNLESS OTHERWISE SPECIFIED.
- ALTERNATE PORT AND FOOT ORIENTATIONS ARE PROVIDED IF SPECIFIED ON ORDER. AVAILABLE ORIENTATIONS ARE 3, 6, 9, AND 12 O'CLOCK.
- BOLT PATTERN FOR SAE 4-BOLT AXIAL INLET IS ALWAYS ORIENTED AS SHOWN WITH RESPECT TO OUTLET PORT.
- APPROXIMATE PUMP WEIGHT (WITHOUT ADAPTERS):  
FLANGE MOUNT PUMP--- 44.3 LBS. (20.1 kgs)  
FOOT MOUNT PUMP--- 56.5 LBS. (25.7 kgs)
- UNLESS OTHERWISE SPECIFIED, ALL DIMENSIONS ARE IN INCHES. DIMENSIONS IN [ ] ARE MILLIMETERS.

DRAWING CERTIFICATION

CUSTOMER NAME \_\_\_\_\_

CUSTOMER PO NUMBER \_\_\_\_\_

CUSTOMER PART NUMBER \_\_\_\_\_

BOM NUMBER \_\_\_\_\_

PUMP TYPE \_\_\_\_\_

SHAFT ROTATION \_\_\_\_\_

INLET PORT ORIENTATION \_\_\_\_\_

OUTLET PORT ORIENTATION \_\_\_\_\_

FOOT BRKT. ORIENTATION \_\_\_\_\_

INLET PORT OPTION \_\_\_\_\_

INLET ADAPTER OPTION \_\_\_\_\_

OUTLET PORT OPTION \_\_\_\_\_

OUTLET ADAPTER OPTION \_\_\_\_\_

RELIEF VALVE SET PRESSURE, IF APPLICABLE \_\_\_\_\_

OTHER INFORMATION \_\_\_\_\_

CERTIFIED BY \_\_\_\_\_

CERTIFIED DATE \_\_\_\_\_

IMO ORDER NUMBER \_\_\_\_\_

DATA REVISION NUMBER \_\_\_\_\_

DRAWN	ERH	1-7-99		<b>Imo Pump</b> 1710 Airport Road PO Box 5020 Monroe, NC USA 28111-5020
CHECKED	CDG	1-7-99		
APPROVED	MJC	1-7-99		
UNLESS OTHERWISE SPECIFIED ASME Y14.5M-1994			TITLE <b>OUTLINE STANDARD (IRON)</b> 3G/_____[143/162]____	
IDENTIFY SECTION STRAINER AND DISCHARGE RELIEF VALVE MUST BE PROVIDED ALIGNMENT UNITS ARE ACCURATELY ALIGNED AT THE FACTORY. ALIGNMENT SHOULD BE CHECKED BEFORE STARTING TO INSURE THAT IT IS STILL WITHIN TOL (0.031MM) RECHECKING FLUSH SUCTION PIPING BEFORE CONNECTING PUMP. PRIME AND VENT PUMP. READ INSTRUCTION MANUAL FOR DETAILS BEFORE STARTING.			FIRST ORDER E1101A	
USED ON			SCALE 1/2	
SIZE F			CAGE CODE 59180	
WEIGHT SEE NOTE 5			SHEET 1 OF 1	