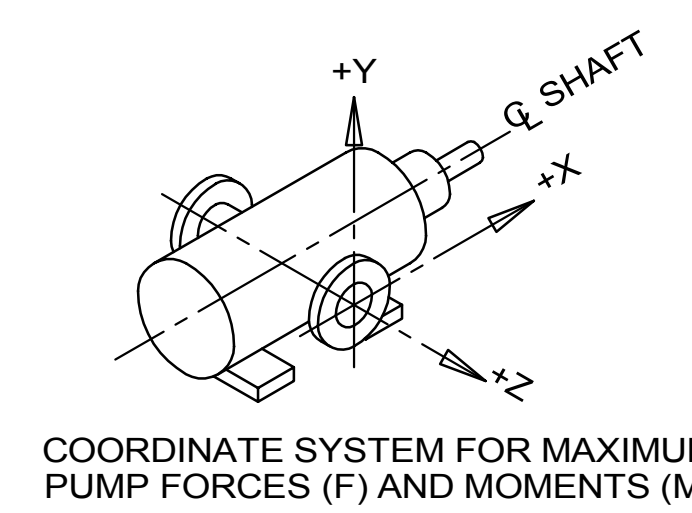
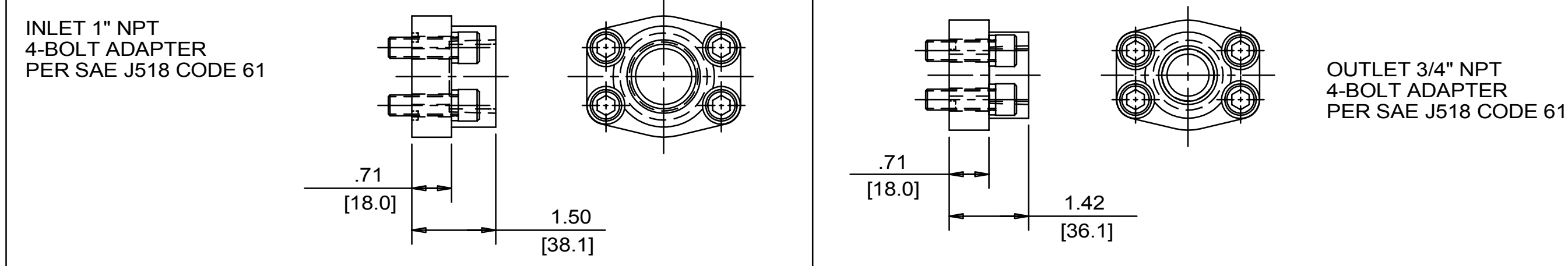
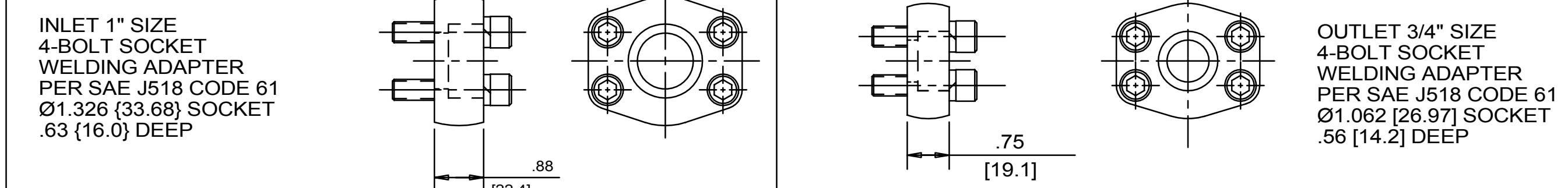
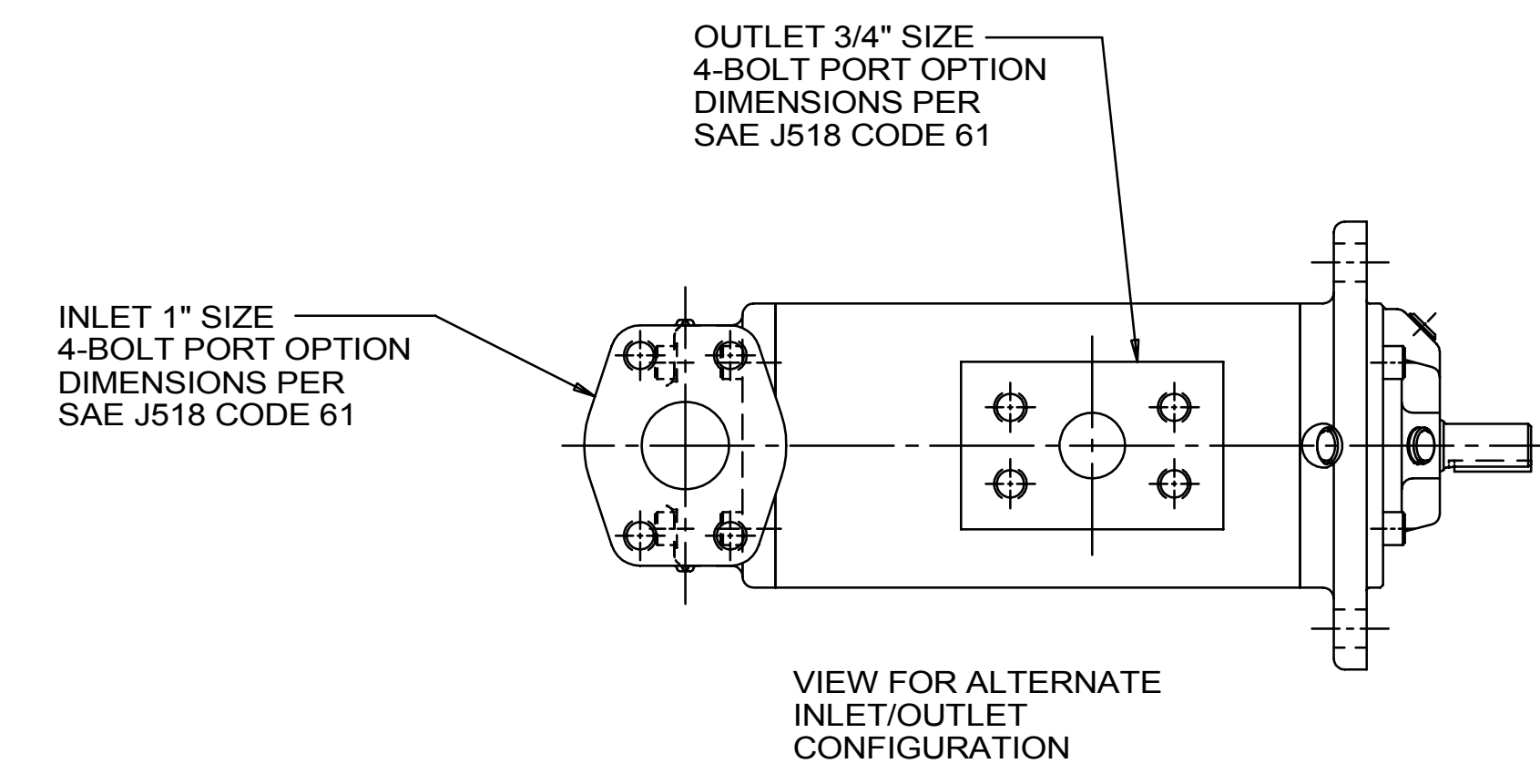


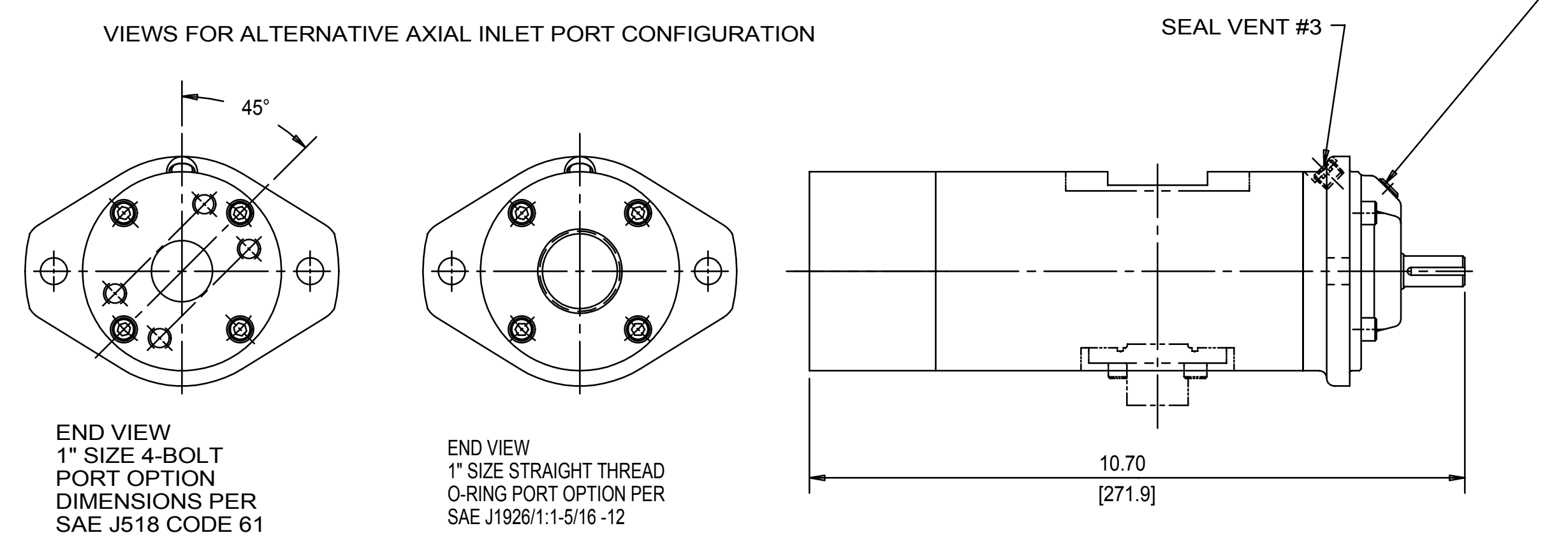
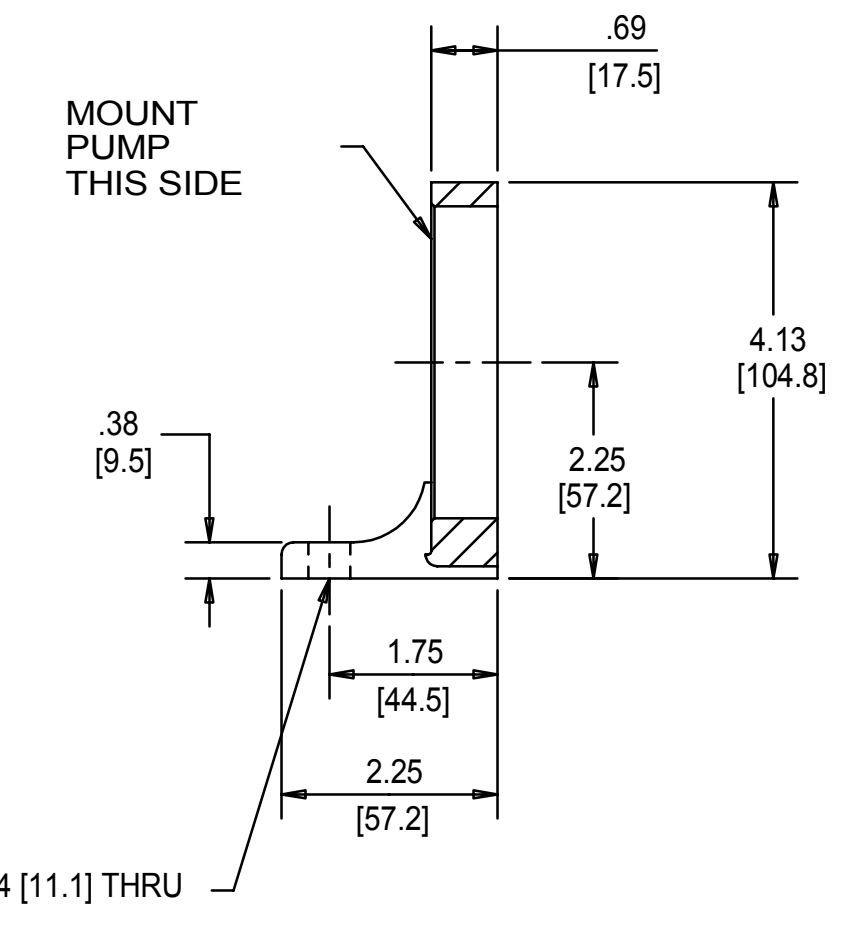
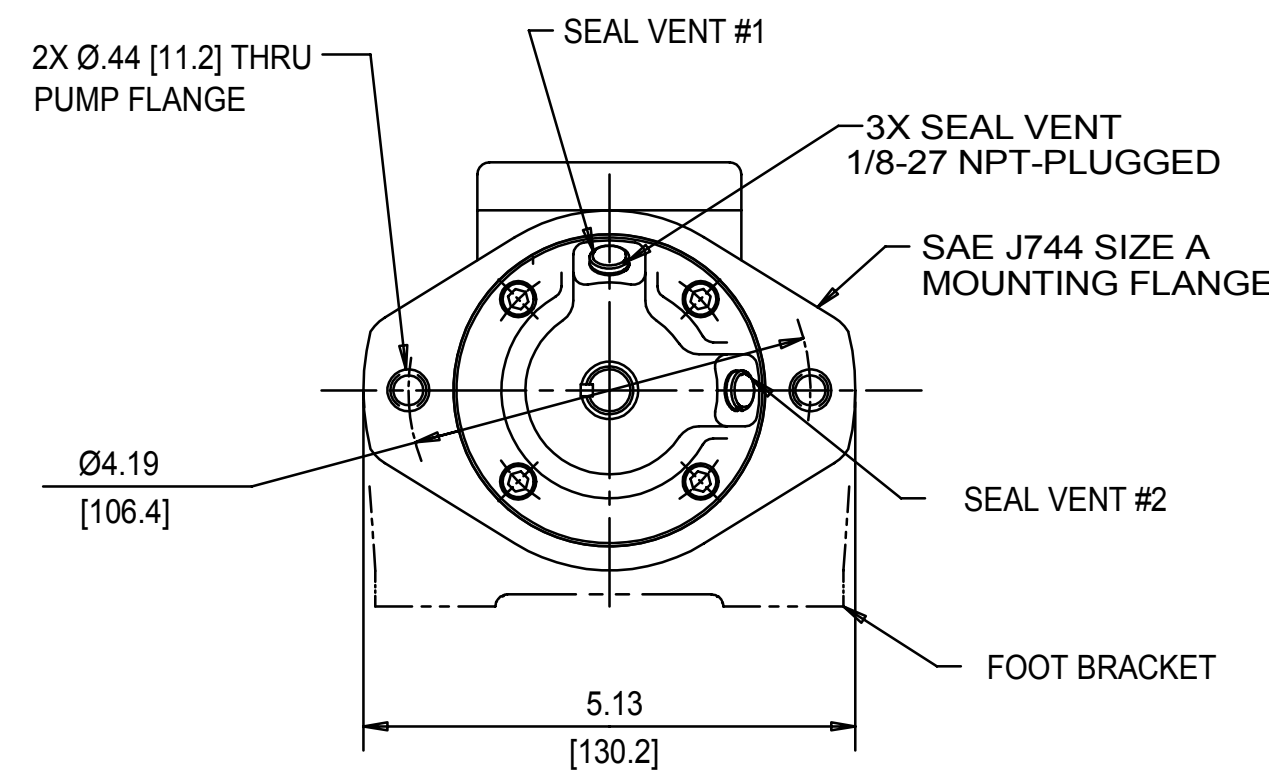
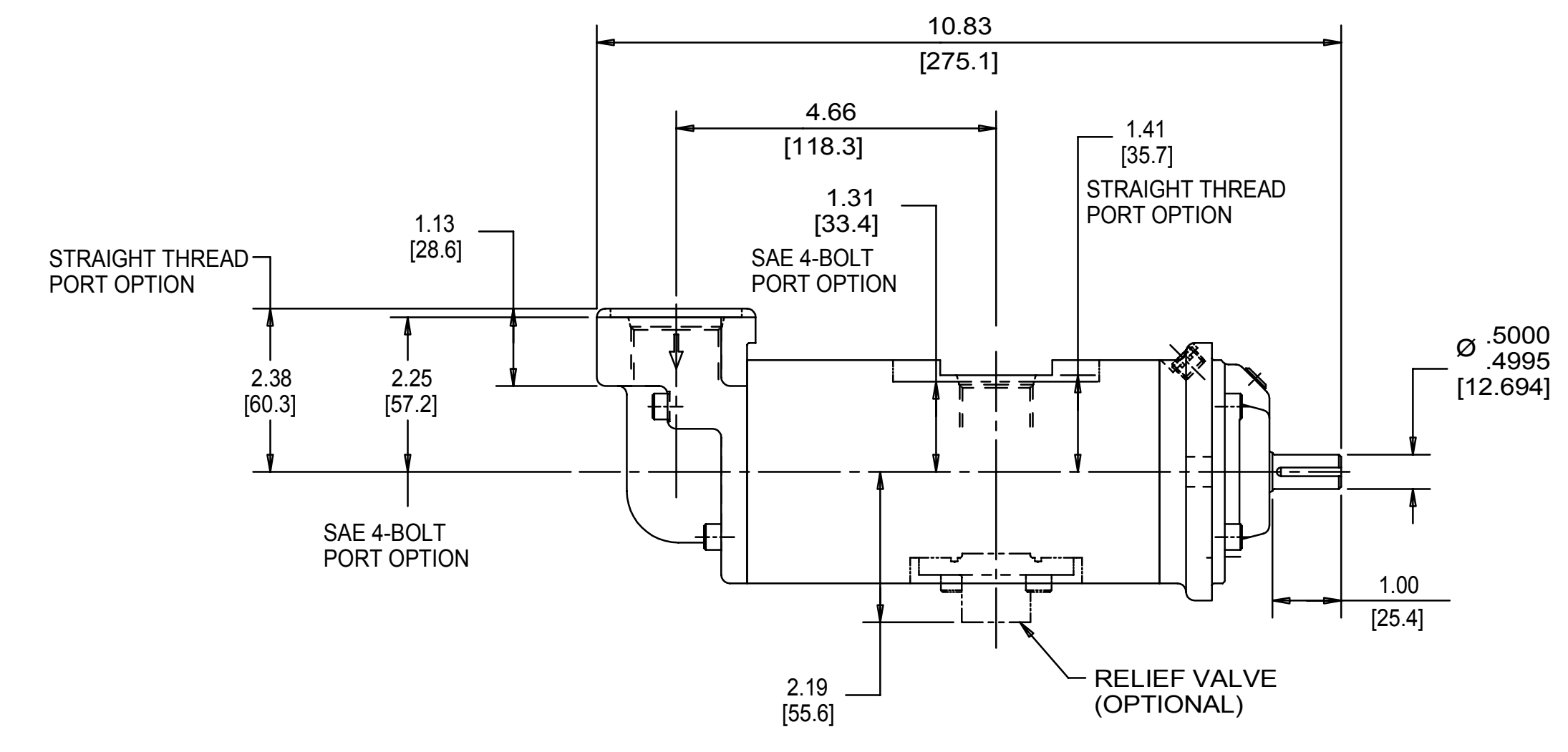
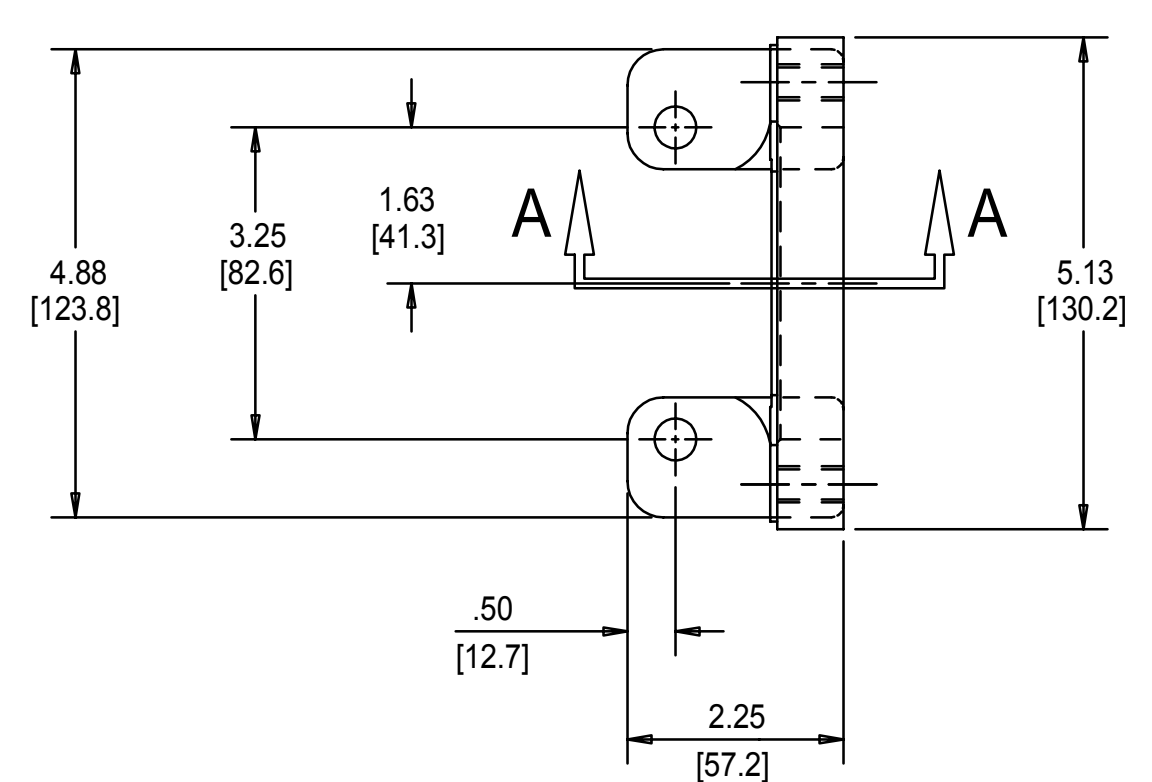
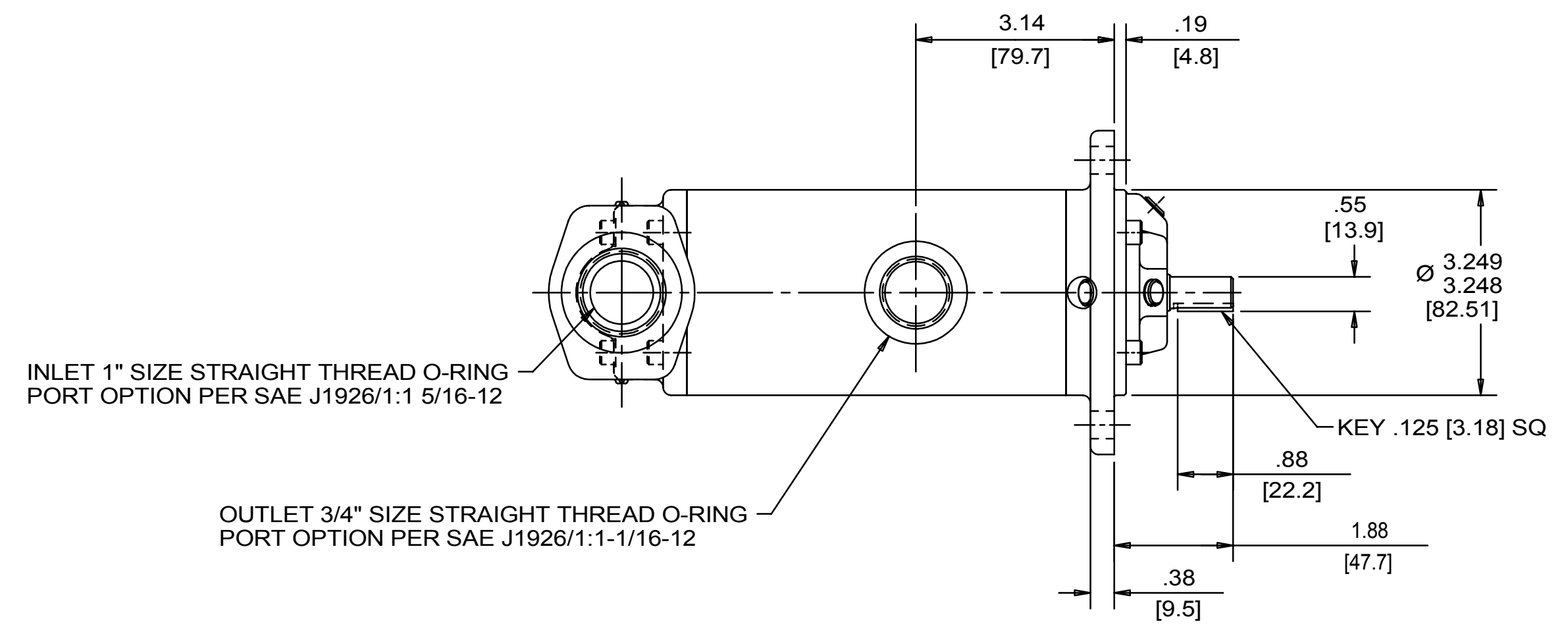
REVISION HISTORY					
CHG NO	ZONE	REV	DESCRIPTION	DATE	BY / APPROVED
11-0187	A1	13	CHANGED TITLE, WAS AA3G	5-16-11	ERH / ERH



INLET:
 FX= 37.5 LBF [169 N] MX= 62.5 LB FT [84.7 N.m]
 FY= 37.5 LBF [169 N] MY= 62.5 LB FT [84.7 N.m]
 FZ= 37.5 LBF [169 N] MZ= 62.5 LB FT [84.7 N.m]

OUTLET:
 FX= 28.1 LBF [125 N] MX= 46.9 LB FT [63.6 N.m]
 FY= 28.1 LBF [125 N] MY= 46.9 LB FT [63.6 N.m]
 FZ= 28.1 LBF [125 N] MZ= 46.9 LB FT [63.6 N.m]

FORCE AND MOMENT VALUES ARE RELATIVE TO CENTER OF INLET AND OUTLET PORT FACES.



- NOTES:
- TO MAXIMIZE SEAL LIFE, SEAL VENT MUST BE ORIENTED UPWARD (12 O'CLOCK) WHEN PUMP IS INSTALLED HORIZONTALLY. VENT ORIENTATION IS NOT CRITICAL WHEN PUMP IS INSTALLED WITH SHAFT VERTICALLY UPWARD.
 - PORT, FOOT, AND SEAL VENT ORIENTATIONS ARE SUPPLIED AS SHOWN ON DRAWING UNLESS OTHERWISE SPECIFIED.
 - ALTERNATE PORT AND FOOT ORIENTATIONS ARE PROVIDED IF SPECIFIED ON ORDER. AVAILABLE ORIENTATIONS ARE 3, 6, 9, AND 12 O'CLOCK.
 - BOLT PATTERN FOR SAE 4-BOLT AXIAL INLET IS ALWAYS ORIENTED AS SHOWN WITH RESPECT TO OUTLET PORT.
 - APPROXIMATE PUMP WEIGHT (WITHOUT ADAPTERS):
 FLANGE MOUNT PUMP-- 18.7 LBS. (8.5 kgs)
 FOOT MOUNT PUMP---- 20.8 LBS. (9.4 kgs)
 - UNLESS OTHERWISE SPECIFIED, ALL DIMENSIONS ARE IN INCHES. DIMENSIONS IN [] ARE MILLIMETERS.

DRAWING CERTIFICATION

CUSTOMER NAME _____
 CUSTOMER PO NUMBER _____
 CUSTOMER PART NUMBER _____

BOM NUMBER _____
 PUMP TYPE _____
 SHAFT ROTATION _____
 INLET PORT ORIENTATION _____
 OUTLET PORT ORIENTATION _____
 FOOT BRKT. ORIENTATION _____
 INLET PORT OPTION _____
 INLET ADAPTER OPTION _____
 OUTLET PORT OPTION _____
 OUTLET ADAPTER OPTION _____
 RELIEF VALVE SET PRESSURE, IF APPLICABLE _____

OTHER INFORMATION _____

CERTIFIED BY _____
 CERTIFIED DATE _____
 IMO ORDER NUMBER _____
 DATA REVISION NUMBER _____

DRAWN	DMM	3-31-98		IMO Pump 1710 Airport Road PO Box 5020 Monroe, NC USA 28111-5020
CHECKED	CDG	4-17-98		
APPROVED	CDG	4-17-98		
UNLESS OTHERWISE SPECIFIED ASME Y14.5M-1994			TITLE OUTLINE STANDARD (IRON) 3G/ _____095__	
ELEMENTS: SELECTION STRAINER AND DISCHARGE RELIEF VALVE MUST BE PROVIDED ALIGNMENT UNITS ARE ACCURATELY ALIGNED AT THE FACTORY. ALIGNMENT SHOULD BE CHECKED BEFORE STARTING TO INSURE THAT IT IS STILL WITHIN TOL- ERANCES. PRESTARTING FLUSH SUCTION PUMP BEFORE CONNECTING FLANGE. PRIME AND VENT PUMP. READ INSTRUCTION MANUAL FOR DETAILS BEFORE STARTING.			FIRST ORDER E3005A	SIZE F
USED ON			SAGE CODE 59180	DWG NO. SDD19409
SCALE 1/2			WEIGHT SEE NOTE 5	SHEET 1 OF 1