

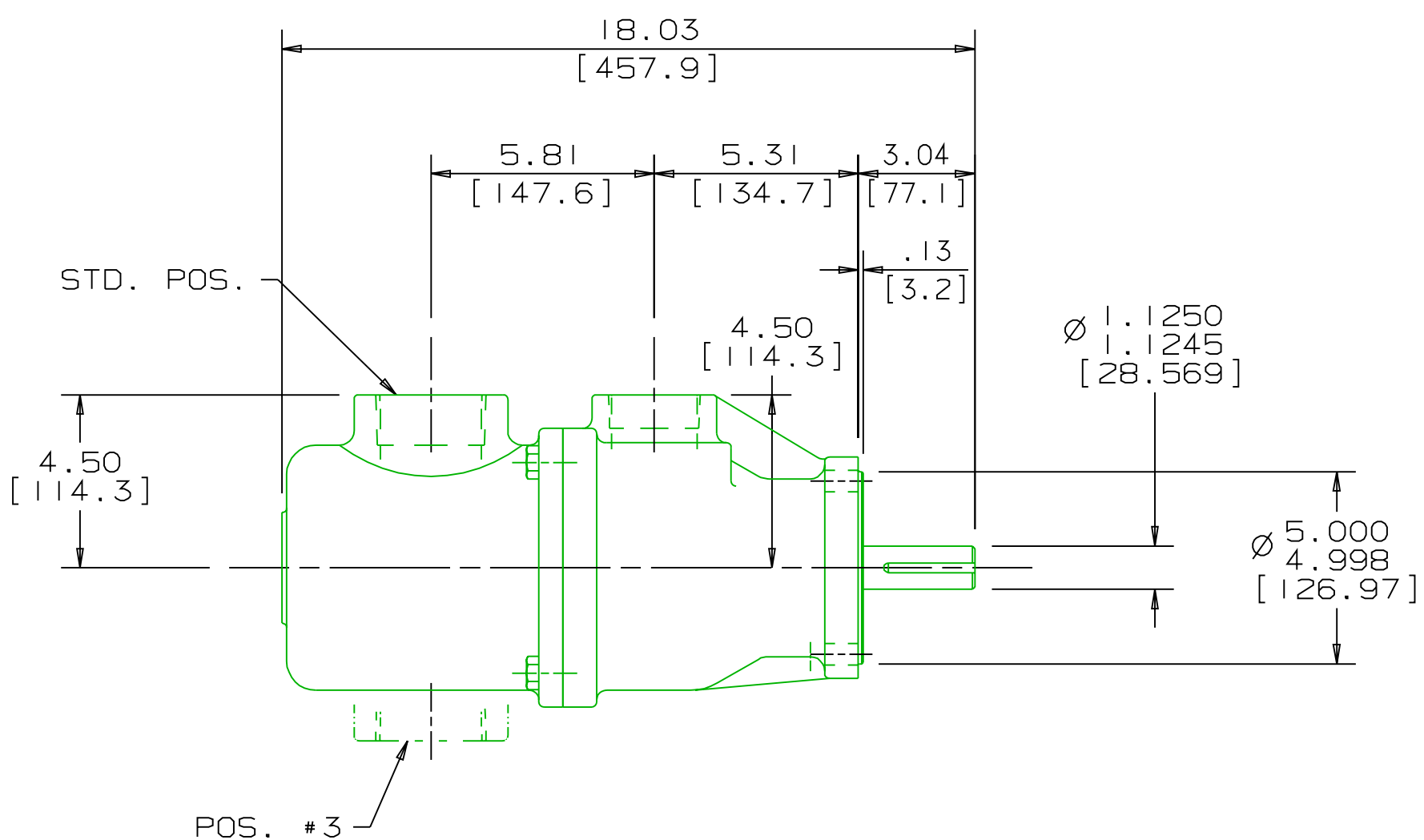
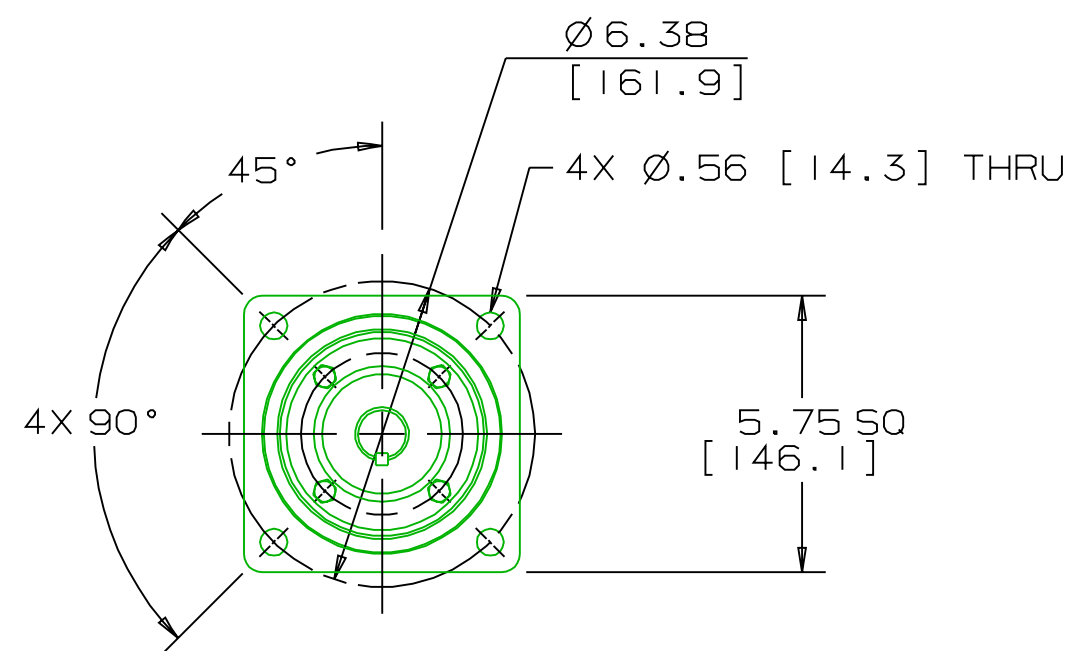
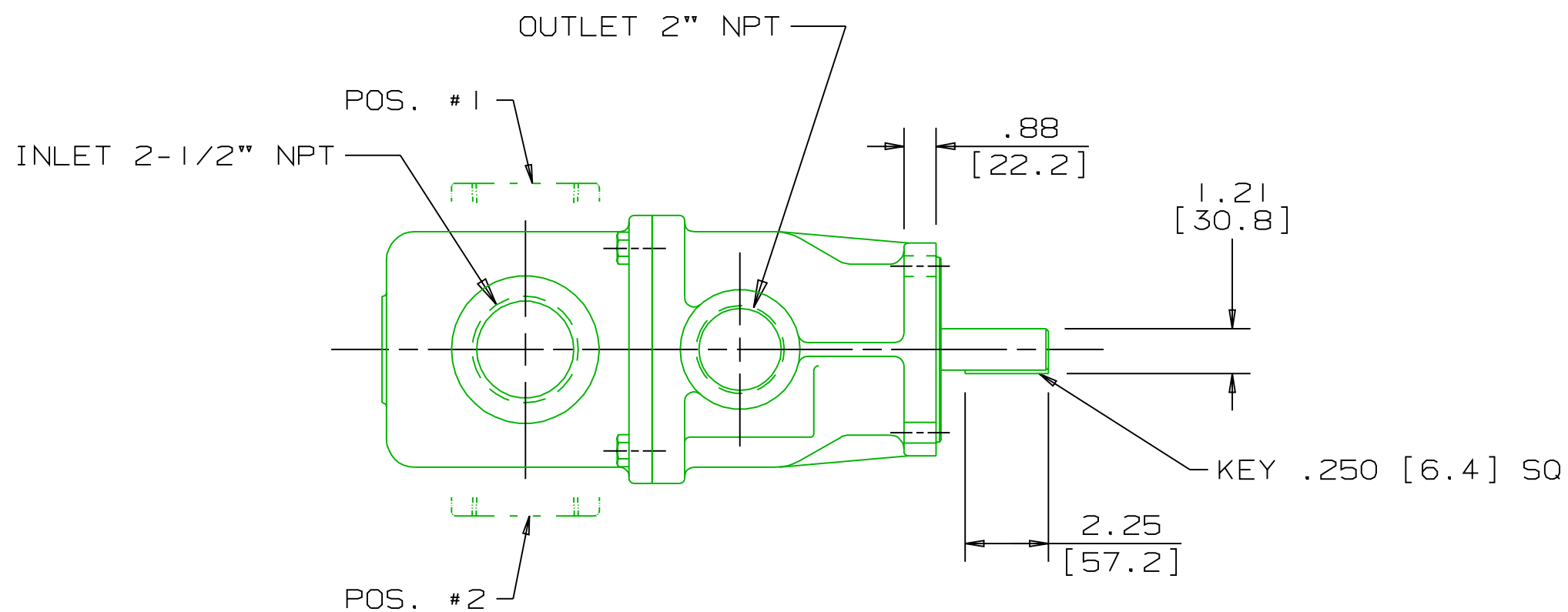
4

3

2

REVISION HISTORY


CHG NO	ZONE	REV	DESCRIPTION	DATE	BY	APPROVED
99-00000	ALL	1	REVISED FOR APPV'D ANSI FORMAT	10-18-99	JTT	JTT
00-00292	ALL	2	ADD SEAL WEEP HOLE NOTE, EMAIL, CERT BLOCK	5-15-00	WLW	WLW
			ADD NOTE 2, REVISE DIMS.			



DRAWING CERTIFICATION	
CUSTOMER NAME	-----
CUSTOMER PO NUMBER	---
CUSTOMER PART NUMBER	-
BOM NUMBER	-----
PUMP TYPE	-----
SHAFT ROTATION	-----
INLET PORT POSITION	--
OTHER INFORMATION	
CERTIFIED BY	-----
CERTIFIED DATE	-----
IMO ORDER NUMBER	-----
DATA REVISION NUMBER	-

NOTES:

- UNLESS OTHERWISE SPECIFIED, ALL DIMENSIONS ARE IN INCHES. DIMENSIONS IN [ ] ARE MILLIMETERS.
- PORT POSITIONS ARE RELATIVE TO THE WEEP HOLE FACING DOWNWARD.

WEB ADDRESS: WWW.IMO-PUMP.COM		EMAIL: IMO.PUMP@COLFAXCORP.COM	
MATERIAL	DRAWN JTT 08-08-97	 <p>Imo Pump 1710 Airport Road PO Box 5020 Monroe, NC USA 28111.5020</p>	<p>TITLE OUTLINE STANDARD _3E_C-187_/200_</p>
PROCESS	CHECKED MJC 08-11-97		
COMMENTS: STANDARD ROTATION IS CLOCKWISE WHEN VIEWED FROM COUPLING END OF PUMP. SUCTION STRAINER AND DISCHARGE RELIEF VALVE MUST BE PROVIDED. ALIGNMENT: UNITS ARE ACCURATELY ALIGNED AT THE FACTORY. ALIGNMENT SHOULD BE CHECKED BEFORE STARTING TO ENSURE THAT IT IS STILL WITHIN .005 [0.13] FIM. PRESTARTING: FLUSH SUCTION PIPING BEFORE CONNECTING PUMP. PRIME AND VENT PUMP. DO NOT START PUMP WITH VALVES CLOSED. READ INSTRUCTION MANUAL FOR DETAILS BEFORE STARTING.	APPD MJC 08-11-97		
	THIRD ANGLE PROJECTION	FIRST ORDER	SIZE C
	USED ON 3243/250	813749	CAGE CODE 59180
			DWG NO SDD19113
			SCALE 1/4
			WEIGHT 92 LBS [41.7 kg]
			SHEET 1 OF 1

4

3

2

A

A